

DESCRIPTION

PMI MODEL NO. P3T-9R5G10G-55-R-SFF IS A SINGLE POLE, THREE THROW, REFLECTIVE SWITCH THAT OPERATES OVER THE FREQUENCY RANGE OF 9.5 TO 10.0 GHz. IT HAS A MAXIMUM INSERTION LOSS OF 1.5 dB AND A TYPICAL ISOLATION OF 55 dB. THIS PRODUCT IS OUTFITTED WITH SMA FEMALE CONNECTORS.

SPECIFICATIONS

- FREQUENCY RANGE: ----- 9.5 TO 10.0 GHz
- INSERTION LOSS: ----- 1.5 dB MAX
- ISOLATION: ----- 55 dB TYP
- VSWR: ----- 1.5:1 TYP
- AVERAGE POWER: ----- 7.5 WATTS
- PEAK POWER: ----- 75 WATTS (62 us MAX PULSE WIDTH)
- SWITCHING SPEED: ----- 1.0 us MAX
- RF CONNECTORS: ----- SMA FEMALE
- CONTROL: ----- MICRO-D 9-PIN MALE CONNECTOR
- POWER SUPPLY: ----- +5 V @ 250 mA
----- -28 V @ 50 mA
- FINISH: ----- BLUE. MOUNTING SIDE FREE OF PAINT

| 9-PIN CONNECTOR PIN-INPUT | |
|---------------------------|------------|
| PIN | FUNCTION |
| 1 | +5 VDC |
| 2 | GND |
| 3 | -28 VDC |
| 4 | GND |
| 5 | T2: J2 TTL |
| 6 | T3: J3 TTL |
| 7 | T4: J4 TTL |
| 8 | GND |
| 9 | GND |

| LOGIC CONTROL TABLE | | | |
|---------------------|-------|-------------|--|
| LOGIC | | SIGNAL PATH | |
| 1 | 0 | | |
| T2 | T3&T4 | J1 TO J2 | |
| T3 | T2&T4 | J1 TO J3 | |
| T4 | T2&T3 | J1 TO J4 | |

"0" = OFF
"1" = ON

ENVIRONMENTAL RATINGS

- TEMPERATURE: ----- -60 °C TO +85 °C (OPERATING)
----- -65 °C TO +125 °C (STORAGE)
- HUMIDITY: ----- MIL-STD-202, METHOD 103B COND. B
- SHOCK: ----- MIL-STD-202, METHOD 213B COND. B
- VIBRATION: ----- MIL-STD-202, METHOD 204D COND. B
- ALTITUDE: ----- MIL-STD-202, METHOD 105C COND. B
- TEMPERATURE CYCLE: ----- MIL-STD-202, METHOD 107D COND. A

NOTE: SPECIFICATIONS WILL VARY OVER OPERATING TEMPERATURE

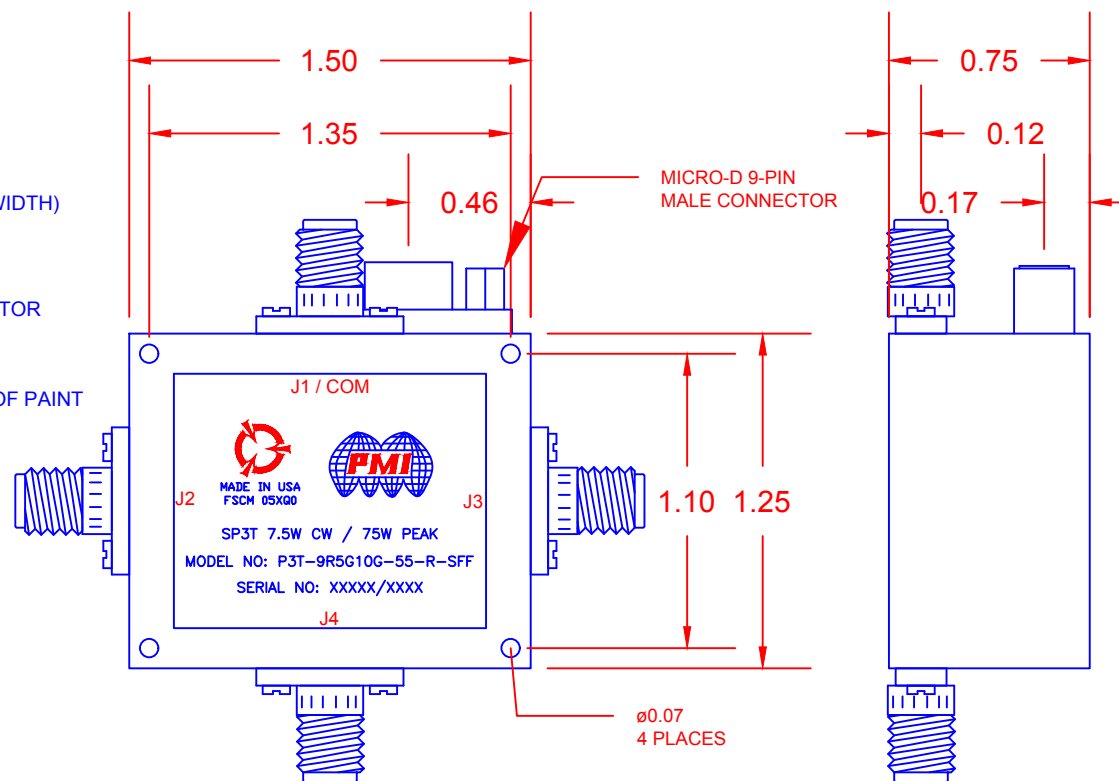
NOTE: THE ABOVE SPECIFICATIONS ARE SUBJECT TO CHANGE OR REVISION

PMI CONFIDENTIAL AND PROPRIETARY

ALL DIMENSIONS
ARE IN INCHES [mm]
TOLERANCES:
X.XX ±0.020
X.XXX ±0.010

| REVISIONS | | | | |
|-----------|------|------------------|----------|----------|
| ZONE | REV. | DESCRIPTION | DATE | APPROVED |
| | A1 | ORIGINAL RELEASE | 08/14/19 | |
| | | | | |
| | | | | |

MECHANICAL OUTLINE



PLANAR MONOLITHICS INDUSTRIES, INC.

7311-F GROVE ROAD

FREDERICK, MARYLAND 21704 USA

TEL: (301)-662-5019, FAX: (301)-662-1731

WEB: www.pmi-rf.com, EMAIL: sales@pmi-rf.com

ISO 9001 CERTIFIED



| APPROVALS | | DATE | TITLE | | | REV. |
|-------------------------|--|----------|---|-------------------|---------------------|------|
| DRAWN <i>BThomas</i> | | 08/14/19 | PRODUCT FEATURE P3T-9R5G10G-55-R-SFF | | | A1 |
| REDRAWN | | | SIZE A | FSCM NO. 05XQ0 | DWG NO. 27036022 | |
| ISSUED | | | SCALE N:S | | SHEET 1 OF 1 | |