

**DESCRIPTION:**

PMI MODEL 4SFB-2G6G-CD-5-N12-SFF IS A FOUR CHANNEL SWITCHED FILTER BANK OFFERING FAST SWITCH SPEED & HIGH REJECTION WITH LOW LOSS.

**SPECIFICATIONS:**

- FREQUENCY RANGE: 2000 MHz TO 6000 MHz
- 3dB BW 1 GHz MIN.
- INSERTION LOSS: 5 dB MAX
- PASSBAND RIPPLE: 0.5 dB PK-PK MAX
- VSWR: 2.0:1 MAX.
- IMPEDANCE: 50 OHMS
- SWITCHING SPEED: 2 us MAX.
- CONTROL: TTL, 2 LINES
- POWER SUPPLY: +5VDC; 200mA max.  
-15VDC; 200mA max.
- CONNECTOR: SMA FEMALE (REMOVABLE)
- SIZE: 4.33" (L) X 4.33" (W) X 0.787" (H)
- FINISH: BLUE EPOXY POLIMIDE COATING IAW MIL-C-22750, TYPE I OVER EPOXY POLIMIDE PRIMER IAW MIL-P-23377, TYPE I, CLASS 1 OR 3.

CTRL1	CTRL2	FILTER PATH
0	1	2 - 3 GHz
0	0	3 - 4 GHz
1	0	4 - 5 GHz
1	1	5 - 6 GHz

FILTER CHARACTERISTICS					
PARAMETER	FL1	FL2	FL3	FL4	UNITS
CENTER FREQUENCY	2500	3500	4500	5500	MHz
5 dB MAX.	1 GHz BANDWIDTH				MHz
-60 dB MIN.	15 % OF CORNER FREQUENCY				MHz

**ENVIRONMENTAL RATINGS:**

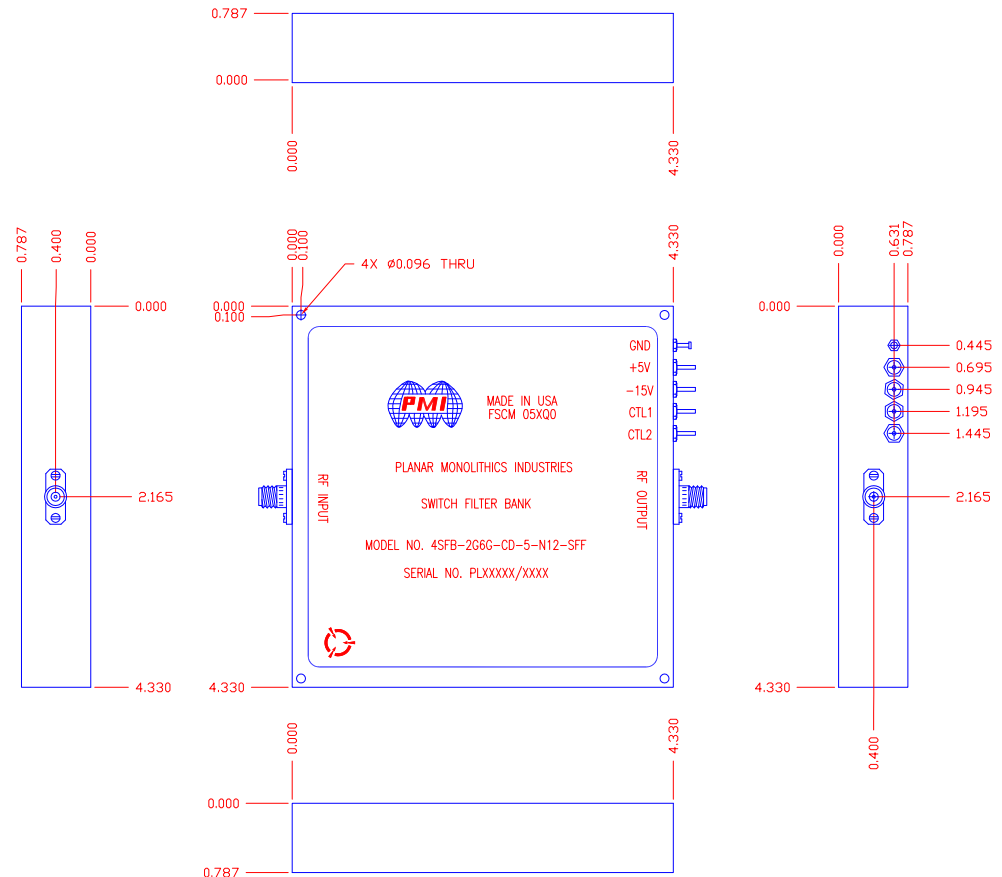
- TEMPERATURE: -40°C TO +85°C (OPERATING)  
-65°C TO +125°C (STORAGE)
- HUMIDITY: MIL-STD-202F, METHOD 103B COND. B
- SHOCK: MIL-STD-202F, METHOD 213B COND. B
- VIBRATION: MIL-STD-202F, METHOD 204D COND. B
- ALTITUDE: MIL-STD-202F, METHOD 105C COND. B
- TEMPERATURE CYCLE: MIL-STD-202F, METHOD 107D COND. A

NOTE: THE ABOVE SPECIFICATIONS ARE SUBJECT TO CHANGE OR REVISION

ALL DIMENSIONS ARE IN INCHES  
TOLERANCES:

- X.XX ± 0.020
- X.XXX ± 0.010

REVISIONS				
ZONE	REV.	DESCRIPTION	DATE	APPROVED
	A1	ORIGINAL RELEASE	3/4/09	
	B1	UPDATE TO NEW LAYOUT	5/26/09	
	C1	ECN # 15-0045	04/10/15	
	C2	ECN # 15-0112	10/06/15	



**PMI CONFIDENTIAL AND PROPRIETARY**

**PLANAR MONOLITHICS INDUSTRIES, INC.**

7311-F GROVE ROAD  
FREDERICK, MARYLAND 21704 USA  
TEL: 301-662-5019 FAX: 301-662-1731  
WEBSITE: [www.pmi-rf.com](http://www.pmi-rf.com)  
E-MAIL: [sales@pmi-rf.com](mailto:sales@pmi-rf.com)  
ISO 9001 CERTIFIED



APPROVALS		DATE	TITLE			REV.
DRAWN <i>S. PALACIO</i>		03/04/09	PRODUCT FEATURE 4SFB-2G6G-CD-5-N12-SFF SWITCHED FILTER BANK			C2
CHECKED			SIZE A	FSCM NO. 05XQ0	DWG NO. 27010341	
ISSUED			SCALE N: S		SHEET	1 OF 1