

DESCRIPTION

PMI MODEL NO. P4T-30M6-70-T-SFF IS A SINGLE POLE, FOUR THROW, ABSORPTIVE SWITCH THAT OPERATES OVER THE FREQUENCY RANGE OF 30 MHz TO 6.0 GHz. IT HAS A MINIMUM ISOLATION OF 70 dB AND A MINIMUM RETURN LOSS OF -12 dB. THIS MODEL IS OUTFITTED WITH SMA FEMALE CONNECTORS.

SPECIFICATIONS

- FREQUENCY RANGE: ----- 30 MHz TO 6.0 GHz
- ISOLATION: ----- 70 dB MIN
- INSERTION LOSS: ----- 2.8 dB MAX
- RETURN LOSS (ALL PORTS ON OR OFF STATE): ----- -12 dB MIN
- RISE/FALL TIME (10% TO 90% RF, 90% TO 10% RF): ----- 80 ns MAX
- ON/OFF TIME (50% TTL TO 90% RF, 50% TTL TO 10% RF): ----- 200 ns MAX
- OPERATING POWER: ----- 27 dBm COM PORT 23 dBm OTHER PORTS @ FREQUENCY OVER 0.5 GHz +20 dBm @ FREQUENCY UNDER 0.5 GHz PEAK 8 WATTS MAX @ 1 us (NOTE: WHEN INPUT +27 dBm, THE OUTPUT OF ON PORT CAN NOT BE FULL REFLECTED)
- POWER SUPPLY: ----- +5 V ± 0.25 V @ 120 mA MAX -15 V ± 0.25 V @ 50 mA MAX
- EMC: ----- -80 dB MIN
- CONTROL LOGIC: ----- 2 BCD, 0 V < "0" < 0.8 V, 2.4 V < "1" < 5 V
- IMPEDANCE: ----- 50 OHMS
- CONNECTORS: ----- SMA FEMALE
- FINISH: ----- ALODINE AND LASER SEALING

TRUTH TABLE

C2	C1	E	ON	OFF
DC	DC	1	-	J0-J1, J2, J3, J4
0	0	0	J0-J1	J0-J2, J3, J4
0	1	0	J0-J2	J0-J1, J3, J4
1	0	0	J0-J3	J0-J1, J2, J4
1	1	0	J0-J4	J0-J1, J2, J3

ENVIRONMENTAL RATINGS

- TEMPERATURE: ----- -40 °C TO +85 °C (OPERATING) -65 °C TO +125 °C (STORAGE)
- HUMIDITY: ----- MIL-STD-202, METHOD 103B COND. B
- SHOCK: ----- MIL-STD-202, METHOD 213B COND. B
- VIBRATION: ----- MIL-STD-202, METHOD 204D COND. B
- ALTITUDE: ----- MIL-STD-202, METHOD 105C COND. B
- TEMPERATURE CYCLE: ----- MIL-STD-202, METHOD 107D COND. A

NOTE: SPECIFICATIONS WILL VARY OVER OPERATING TEMPERATURE

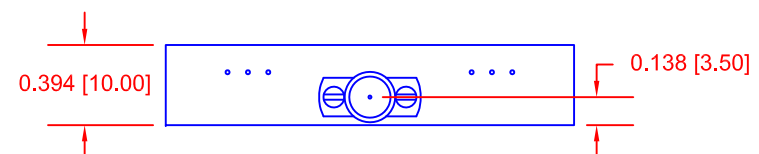
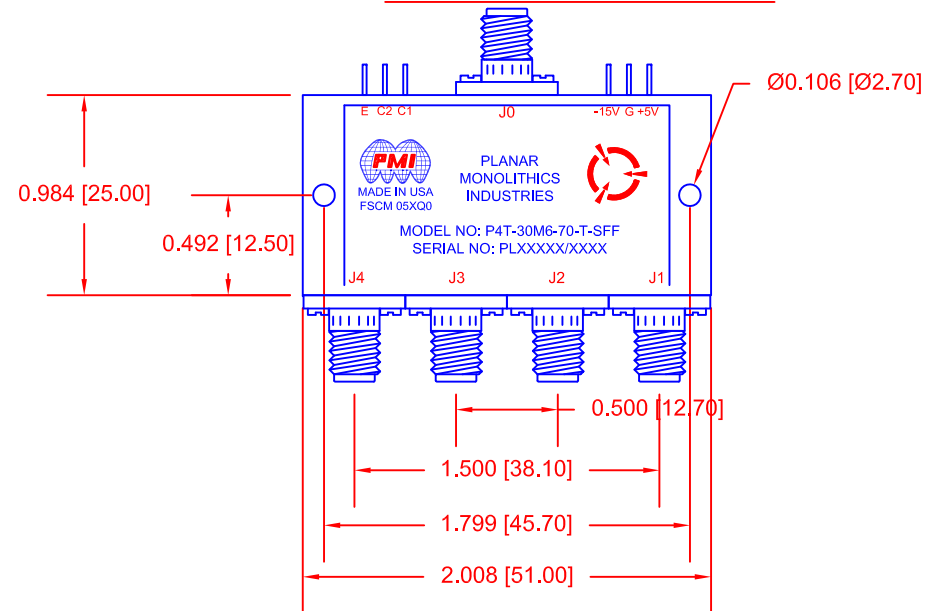
NOTE: THE ABOVE SPECIFICATIONS ARE SUBJECT TO CHANGE OR REVISION

PMI CONFIDENTIAL AND PROPRIETARY

ALL DIMENSIONS ARE IN INCHES [mm]
TOLERANCES:
X,XX ±0.020
X,XXX ±0.010

REVISIONS				
ZONE	REV.	DESCRIPTION	DATE	APPROVED
	-	PRELIMINARY	11/19/2019	

MECHANICAL OUTLINE



PLANAR MONOLITHICS INDUSTRIES, INC.
7311-F GROVE ROAD
FREDERICK, MARYLAND 21704 USA
TEL: (301)-662-5019, FAX: (301)-662-1731
WEB: www.pmi-rf.com, EMAIL: sales@pmi-rf.com
ISO 9001 CERTIFIED



APPROVALS		DATE	TITLE			REV.
DRAWN <i>EW</i>		11/19/19	PRODUCT FEATURE P4T-30M6-70-T-SFF			-
REDRAWN			SIZE A	FSCM NO. 05XQ0	DWG NO. PRELIMINARY	
ISSUED			SCALE N:S	SHEET 1 OF 1		