

## DESCRIPTION

PMI MODEL APD-16-500M18G-SFF-30W IS AN SIXTEEN WAY POWER DIVIDER FEATURING HIGH ISOLATION, LOW INSERTION LOSS, LOW VSWR AND HAS EXCELLENT PHASE AND AMPLITUDE BALANCE.

## SPECIFICATIONS

- FREQUENCY RANGE: 0.5 TO 18 GHz
- INSERTION LOSS: 12.0 dB MAXIMUM (ABOVE 12.04 dB SPLIT)
- VSWR: INPUT: 2.0:1 MAXIMUM  
OUTPUT: 1.8:1 MAXIMUM
- ISOLATION: 12 dB MINIMUM @ 0.5 TO 0.6 GHz  
14 dB MINIMUM @ 0.6 TO 18.0 GHz
- AMPLITUDE BALANCE: ±1.5 dB MAXIMUM
- PHASE BALANCE: ±9° MAXIMUM
- POWER HANDLING: FORWARD: 30 W MAXIMUM  
REVERSED: 1 W MAXIMUM
- IMPEDANCE: 50 Ω
- CONNECTORS: SMA FEMALE (X17)
- FINISH: PAINTED BLUE
- SOLDER: LEAD FREE, RoHS COMPLIANT
- WEIGHT: 3500 g

## ENVIRONMENTAL RATINGS

- TEMPERATURE: -55 °C TO +85 °C (OPERATING)  
-65 °C TO +125 °C (STORAGE)
- HUMIDITY: MIL-STD-202F, METHOD 103B COND. B
- SHOCK: MIL-STD-202F, METHOD 213B COND. B
- VIBRATION: MIL-STD-202F, METHOD 204D COND. B
- ALTITUDE: MIL-STD-202F, METHOD 105C COND. B
- TEMPERATURE CYCLE: MIL-STD-202F, METHOD 107D COND A

NOTE: SPECIFICATIONS WILL VARY OVER OPERATING TEMPERATURE

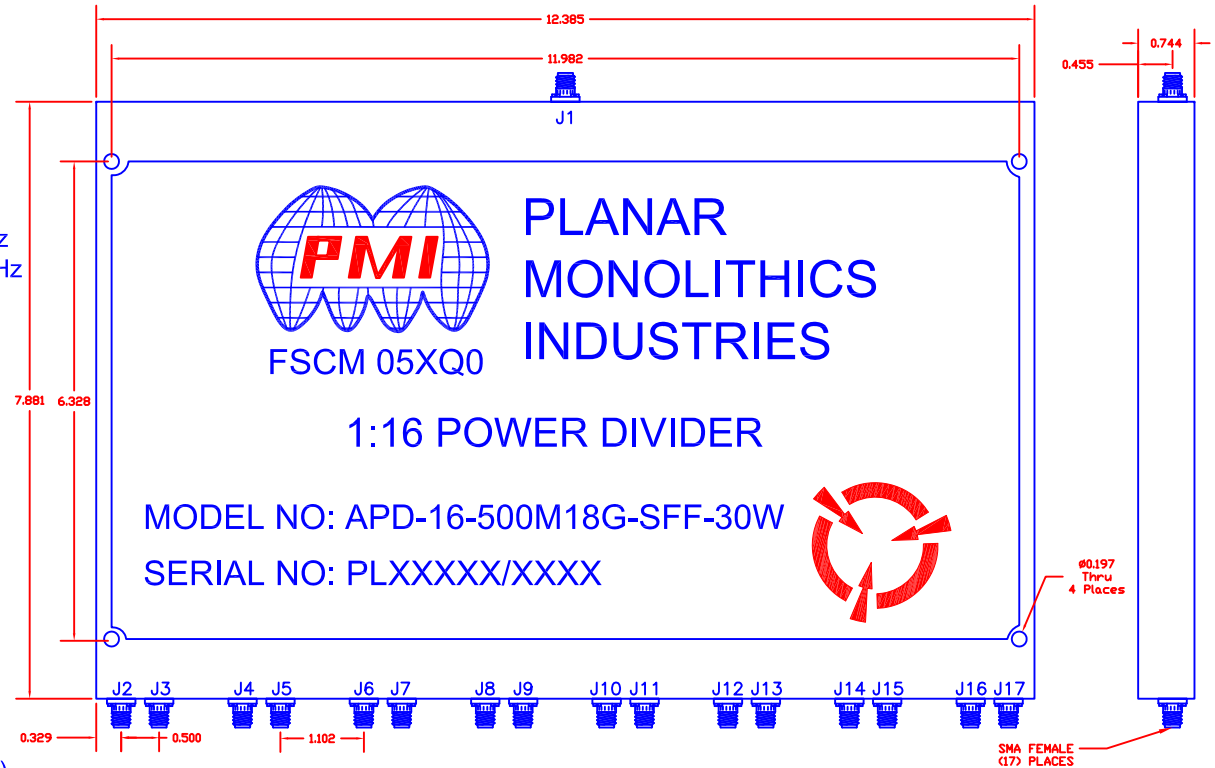
NOTE: THE ABOVE SPECIFICATIONS ARE SUBJECT TO CHANGE OR REVISION

ALL DIMENSIONS ARE IN INCHES  
TOLERANCES:  
X.XX ±0.020  
X.XXX ±0.010

**PMI CONFIDENTIAL AND PROPRIETARY**

REVISIONS				
ZONE	REV.	DESCRIPTION	DATE	APPROVED
	-	PRELIMINARY	07/19/17	

## MECHANICAL OUTLINE



**PLANAR MONOLITHICS INDUSTRIES, INC.**  
7311-F GROVE ROAD  
FREDERICK, MARYLAND 21704 USA  
TEL: (301)-662-5019, FAX: (301)-662-1731  
WEB: www.pmi-rf.com, EMAIL: sales@pmi-rf.com  
ISO 9001 CERTIFIED



APPROVALS		DATE	TITLE			
DRAWN <i>E.M.F.</i>		7/19/17	PRODUCT FEATURE APD-16-500M18G-SFF-30W			
CHECKED			SIZE A	FSCM NO. 05XQ0	DWG NO. PRELIMINARY	REV. -
ISSUED			SCALE N:S	SHEET 1 OF 1		