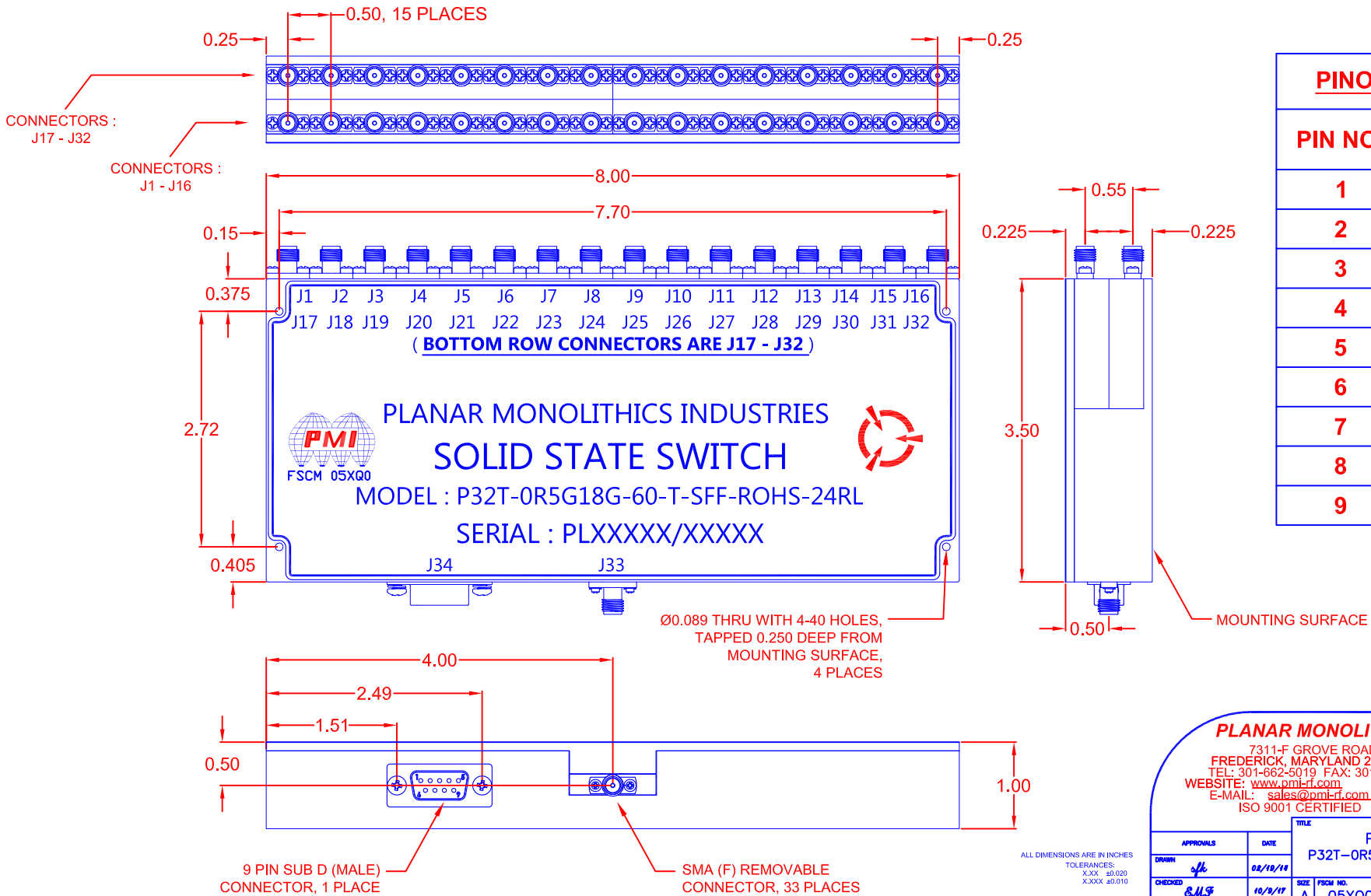


DESCRIPTION

PMI MODEL P32T-0R5G18G-60-T-SFF-ROHS-24RL IS AN ABSORPTIVE, SINGLE POLE THIRTY TWO WAY, HIGH SPEED SOLID STATE SWITCH. THIS MODEL OFFERS LOSS LOSS AND HIGH ISOLATION, AND IS SUPPLIED IN A COMPACT HOUSING MEASURING ONLY 8.0" X 3.5" X 1.0"

MECHANICAL

REVISIONS				
ZONE	REV.	DESCRIPTION	DATE	APPROVED
	-	PRELIMINARY	02/19/11	



PINOUT TABLE

PIN NO:	FUNCTION
1	E1
2	E2
3	E3
4	E4
5	E5
6	N/C
7	+V
8	-V
9	GND

PMI CONFIDENTIAL AND PROPRIETARY

PLANAR MONOLITHICS INDUSTRIES, INC.

7311-F GROVE ROAD
 FREDERICK, MARYLAND 21704 USA
 TEL: 301-662-5019 FAX: 301-662-1731
 WEBSITE: www.pmi-rf.com
 E-MAIL: sales@pmi-rf.com
 ISO 9001 CERTIFIED



ALL DIMENSIONS ARE IN INCHES
 TOLERANCES:
 .XXX ±0.020
 XXXX ±0.010

APPROVALS		DATE	TITLE			
DRAWN <i>apl</i>		02/19/11	PRODUCT FEATURE P32T-0R5G18G-60-T-SFF-ROHS-24RL			
CHECKED <i>SMS</i>	10/9/11	SIZE A	FORM NO. 05XQ0	DWG NO.	PRELIMINARY	REV. -
ISSUED		SCALE N:S		SHEET	2 OF 2	