

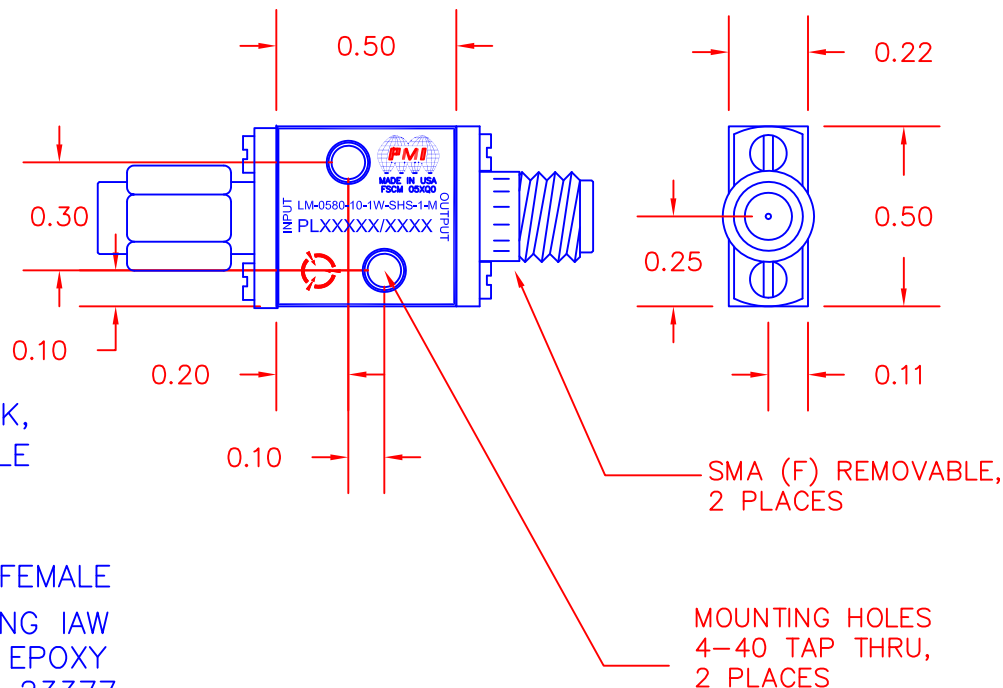
DESCRIPTION

PMI MODEL: LM-0580-10-1W-SHS-1-M IS A HIGH SPEED, HIGH POWER HARD DIODE-LIMITER. IT OPERATES OVER THE FREQUENCY RANGE OF 1.5 TO 8.0GHz, WITH A MALE SMA ON THE INPUT RF CONNECTOR.

REVISIONS				
ZONE	REV.	DESCRIPTION	DATE	APPROVED
	-	PRELIMINARY	08/05/15	

SPECIFICATIONS

- FREQUENCY RANGE: 0.5 TO 8.0 GHz
- INSERTION LOSS
 @-20dBm INPUT: 2.0dB MAX, 1.5dB TYP
- VSWR @-20dBm INPUT: 2.0:1 MAX, 1.5:1 TYP
- LEAKAGE @ 1 WATT
 CW INPUT: +14dBm MAX, +10dBm TYP
- SPEED: 10ns
- INPUT POWER: 1 WATT CW, 100 WATTS PEAK,
 1us PULSE, 0.1% DUTY CYCLE
 DERATED TO 20% AT 125°C
- LIMITING THRESHOLD: +10dBm TYP
- CONNECTORS: SMA: RF IN=MALE, RF OUT=FEMALE
- FINISH: GRAY EPOXY POLIMIDE COATING IAW
 MIL-C-22750, TYPE I OVER EPOXY
 POLIMIDE PRIMER IAW MIL-P-23377,
 TYPE I, CLASS 1 OR 3.
- SIZE: 0.5" X 0.5" X 0.22"



PMI CONFIDENTIAL AND PROPRIETARY

ENVIRONMENTAL RATINGS

- TEMPERATURE: -54°C TO +85°C (OPERATING)
 -65°C TO +125°C (STORAGE)
- HUMIDITY: MIL-STD-202F, METHOD 103B COND. B
- SHOCK: MIL-STD-202F, METHOD 213B COND. B
- VIBRATION: MIL-STD-202F, METHOD 204D COND. B
- ALTITUDE: MIL-STD-202F, METHOD 105C COND. B
- TEMPERATURE CYCLE: MIL-STD-202F, METHOD 107D COND. A

NOTE: SPECIFICATIONS WILL VARY OVER OPERATING TEMPERATURE
 NOTE: THE ABOVE SPECIFICATIONS ARE SUBJECT TO CHANGE OR REVISION

ALL DIMENSIONS ARE IN INCHES
 TOLERANCES:
 X.XX ±0.020
 X.XXX ±0.010
 WEIGHT: X.XX oz.

PLANAR MONOLITHICS INDUSTRIES, INC.

7311-F GROVE ROAD
 FREDERICK, MARYLAND 21704 USA
 TEL: 301-662-5019 FAX: 301-662-1731
 WEBSITE: www.pmi-rf.com
 E-MAIL: sales@pmi-rf.com
 ISO 9001 CERTIFIED



APPROVALS		DATE	TITLE			
DRAWN PDW		08/05/15	PRODUCT FEATURE LM-0580-10-1W-SHS-1-M			
CHECKED			SIZE	FSCM NO.	DWG NO.	REV.
ISSUED			A	05XQ0	PRELIMINARY	-
			SCALE	N:S		SHEET 1 OF 1