

DESCRIPTION

PMI MODEL P2T-30M400M-50-R-12V-SFF-HIP2W IS A REFLECTIVE, SINGLE POLE, TWO THROW PIN DIODE SWITCH THAT OPERATES OVER THE 30 MHz TO 400 MHz FREQUENCY RANGE. THIS MODEL IS CAPABLE OF HANDLING AN INPUT POWER LEVEL OF 2 WATTS CW WHILE PROVIDING SWITCHING SPEEDS OF <100 ns AND REQUIRES A SINGLE +12 VDC SUPPLY. THIS MODEL INCORPORATES A TTL COMPATIBLE DRIVER FOR EASY SYSTEM INTEGRATION.

SPECIFICATIONS

- FREQUENCY RANGE: 30 TO 400 MHz
- ISOLATION: 50 dB MINIMUM
- INSERTION LOSS: 1.0 dB MAXIMUM
- VSWR IN/OUT: 2.0:1 MAXIMUM
- OPERATING INPUT POWER: 2 WATTS CW MAXIMUM (NOT TO BE SWITCHED ANY HIGHER THAN 50 kHz [PRI])
- RF SWITCHING SPEED: 100 ns MAXIMUM (50% TTL TO 10% / 90% RF)
- IMPEDANCE: 50 OHMS
- DC VOLTAGE: +12 V @ 75 mA TYPICAL
- CONTROL SIGNAL: TTL LOGIC (SEE LOGIC TABLE)
- CONNECTORS: SMA(F) - REMOVABLE
- CONTROL CONNECTORS: SOLDER PINS
- FINISH: EPOXY PAINTED BLUE BOTTOM SIDE TO BE UNPAINTED (SILVER PLATED)

ENVIRONMENTAL RATINGS

- TEMPERATURE: -54 °C TO +85 °C (OPERATING)
-55 °C TO +125 °C (STORAGE)
- SHOCK: MIL-STD-202F, METHOD 213B COND. B
- VIBRATION: MIL-STD-202F, METHOD 204D COND. B
- ALTITUDE: MIL-STD-202F, METHOD 105C COND. B
- TEMPERATURE CYCLE: MIL-STD-202F, METHOD 107D

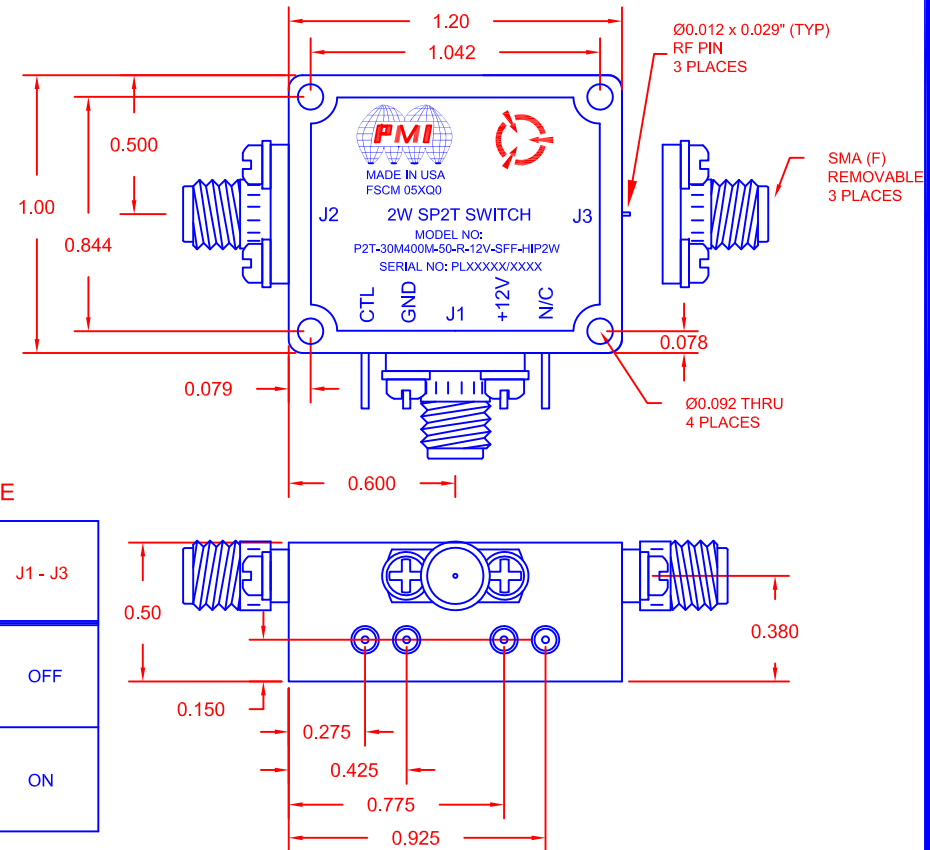
NOTE: SPECIFICATIONS WILL VARY OVER OPERATING TEMPERATURE
NOTE: THE ABOVE SPECIFICATIONS ARE SUBJECT TO CHANGE OR REVISION

ALL DIMENSIONS ARE IN INCHES
TOLERANCES:
X.XX ±0.020
X.XXX ±0.010

PMI CONFIDENTIAL AND PROPRIETARY

REVISIONS				
ZONE	REV.	DESCRIPTION	DATE	APPROVED
	-	PRELIMINARY	06/22/15	K.M.

MECHANICAL OUTLINE



LOGIC TABLE

CTL	J1 - J2	J1 - J3
0	ON	OFF
1	OFF	ON

PLANAR MONOLITHICS INDUSTRIES, INC.
7311-F GROVE ROAD
FREDERICK, MARYLAND 21704 USA
TEL: (301)-662-5019, FAX: (301)-662-1731
WEB: www.pmi-rf.com, EMAIL: sales@pmi-rf.com
ISO 9001 CERTIFIED



APPROVALS		DATE	TITLE			
DRAWN K. MASON		06/22/15	PRODUCT FEATURE P2T-30M400M-50-R-12V-SFF-HIP2W			
CHECKED			SIZE A	FSCM NO. 05XQ0	DWG NO. PRELIMINARY	REV. -
ISSUED			SCALE N:S	SHEET 1 OF 1		