

DESCRIPTION:

PMI MODEL NUMBER DTA-2G20G-64-10B-SFF IS A 10 BIT PROGRAMMABLE 64 dB PIN DIODE ATTENUATOR WITH STEP RESOLUTION AS LOW AS 0.06 dB OVER THE FREQUENCY RANGE OF 2.0 GHz TO 20.0 GHz.

SPECIFICATIONS:

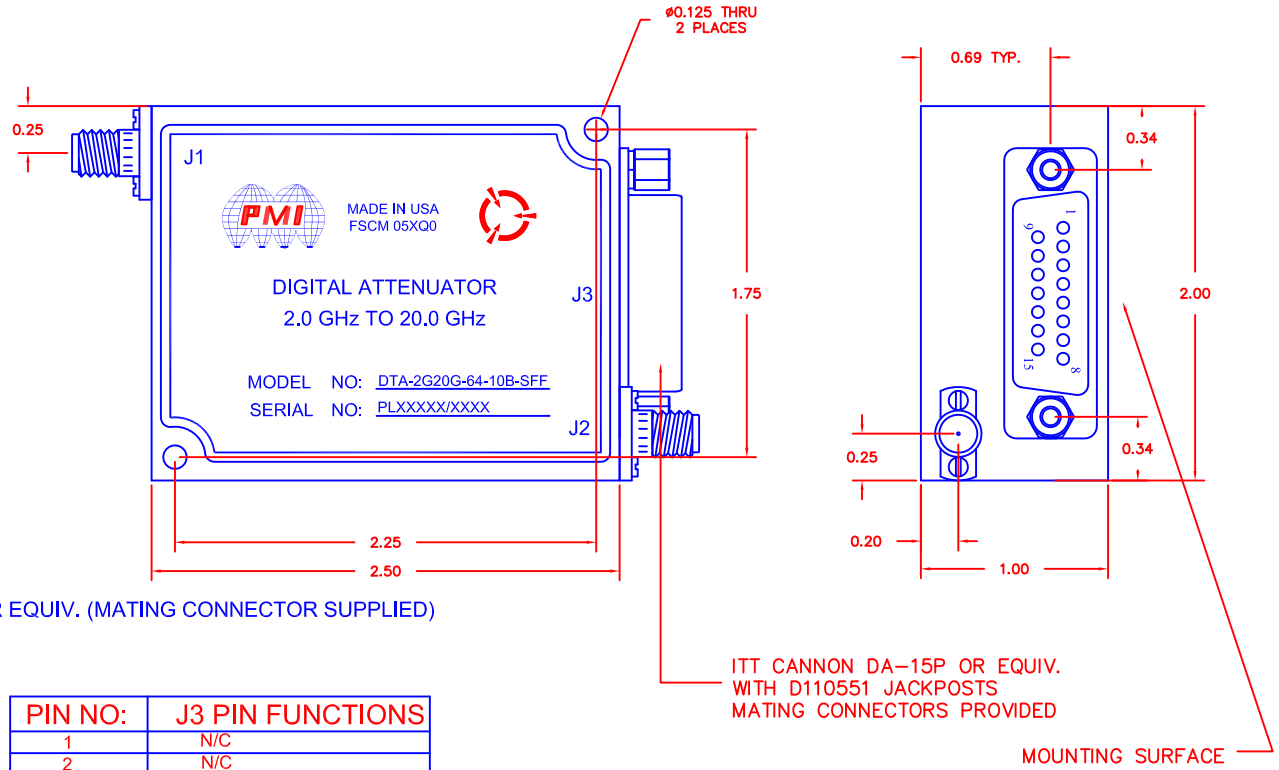
- FREQUENCY: 2.0 GHz TO 20.0 GHz
- INSERTION LOSS: 6.5 dB MAX.
- ATTENUATION RANGE: 64 dB
- ACCURACY OF ATTENUATION: ±1.0 dB @ 0 to 20 dB
±1.5 dB @ 20 to 40 dB
±2.0 dB @ 40 to 60 dB
- ATTENUATION FLATNESS: ±1.0 dB @ 20 dB
±1.25 dB @ 40 dB
±3.0 dB @ 60 dB
- VSWR: 2.0:1 MAX.
- SPEED: 1 us MAX.
- INPUT POWER: +15 dBm CW TYP.
- ATTENUATION CONTROL: 10-BIT DIGITAL TTL
- LSB: 0.06 dB
- DC SUPPLY: +15 VDC, 150 mA MAX.
- PWR/CTL CONNECTORS: ITT CANNON DA-15P OR EQUIV. (MATING CONNECTOR SUPPLIED)
- RF CONNECTORS: SMA FEMALE
- FINISH: MOUNTING SURFACE FREE OF PAINT (GOLD) BLUE EPOXY POLIMIDE COATING IAW MIL-C-22750, TYPE I OVER EPOXY POLIMIDE PRIMER IAW MIL-P-23377, TYPE I, CLASS 1 OR 3.
- LOGIC INPUT:
LOGIC "0" (BIT OFF): -0.3 to +0.8V
LOGIC "1" (BIT ON): +2.0 to +5.0V

ENVIRONMENTAL RATINGS:

- TEMPERATURE: -54 °C TO +85 °C (OPERATING)
-65 °C TO +125 °C (STORAGE)
- HUMIDITY: MIL-STD-202F, METHOD 103B COND. B
- SHOCK: MIL-STD-202F, METHOD 213B COND. B
- VIBRATION: MIL-STD-202F, METHOD 204D COND. B
- ALTITUDE: MIL-STD-202F, METHOD 105C COND. B
- TEMPERATURE CYCLE: MIL-STD-202F, METHOD 107

NOTE: THE ABOVE SPECIFICATIONS ARE SUBJECT TO CHANGE OR REVISION

REVISIONS				
ZONE	REV.	DESCRIPTION	DATE	APPROVED
	—	PRELIMINARY	2/21/19	



PIN NO:	J3 PIN FUNCTIONS
1	N/C
2	N/C
3	0.06dB (LSB)
4	0.13dB
5	0.25dB
6	0.5dB
7	1.0dB
8	2.0dB
9	4.0dB
10	8.0dB
11	16.0dB
12	32.0dB (MSB)
13	+15VDC
14	-15VDC (NOT USED)
15	GND

PMI CONFIDENTIAL AND PROPRIETARY

PLANAR MONOLITHICS INDUSTRIES, INC.
 7311-F GROVE ROAD
 FREDERICK, MARYLAND 21704 USA
 TEL: 301-662-5019 FAX: 301-662-1731
 WEBSITE: www.pmi-rf.com
 E-MAIL: sales@pmi-rf.com
 ISO 9001 CERTIFIED



APPROVALS		DATE	TITLE		
DRAWN		2/21/19	PRODUCT FEATURE		
CHECKED			DTA-2G20G-64-10B-SFF		
ISSUED			SIZE	FSCM NO.	DWG NO.
			A	05XQ0	PRELIMINARY
			SCALE	N:S	SHEET 1 OF 1

ALL DIMENSIONS ARE IN INCHES
 TOLERANCES:
 X.XX ±0.020
 X.XXX ±0.010