

DESCRIPTION

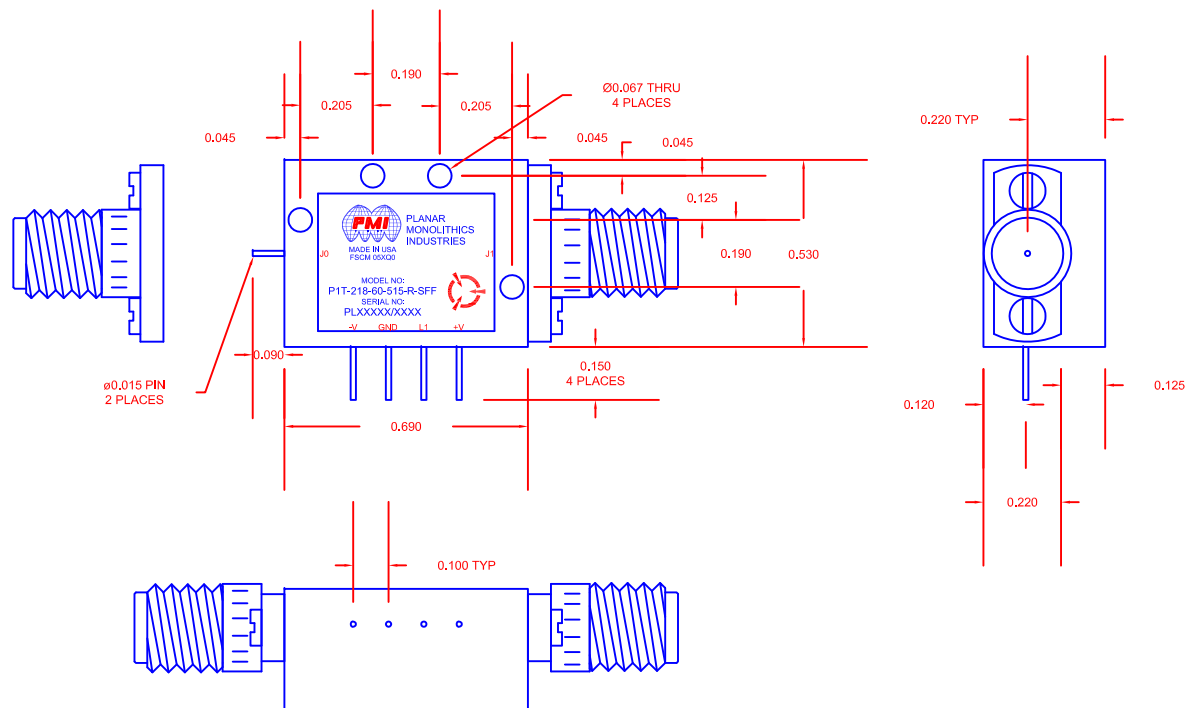
PMI MODEL NO. P1T-218-60-515-R-SFF IS A SINGLE POLE, SINGLE THROW, REFLECTIVE SWITCH OPERATING OVER THE FREQUENCY RANGE OF 2.0 TO 18.0 GHz. IT HAS A MINIMUM ISOLATION OF 60 dB AND A MAXIMUM INSERTION LOSS OF 1.8 dB. THIS MODEL IS OUTFITTED WITH SMA FEMALE CONNECTORS.

REVISIONS				
ZONE	REV.	DESCRIPTION	DATE	APPROVED
	-	ORIGINAL RELEASE	8/5/2021	

SPECIFICATIONS

- FREQUENCY RANGE: ----- 2.0 TO 18.0 GHz
- INTERFACE: ----- TTL (1: OFF, 0: ON)
- ISOLATION: ----- 60 dB MIN
- INSERTION LOSS: ----- 1.8 dB MAX
- SWITCHING TIME: ----- 30 ns MAX
- VSWR: ----- 1.9:1 MAX
- IMPEDANCE: ----- 50 OHMS
- RF INPUT POWER: ----- 1W CW / 2W PEAK MAX
- SUPPLY VOLTAGES: ----- +5 V
----- -15 V
- SUPPLY CURRENT: ----- +65 mA MAX
----- -65 mA MAX
- CONNECTORS: ----- SMA FEMALE
- FINISH: ----- GOLD PLATED

MECHANICAL OUTLINE



ENVIRONMENTAL RATINGS

- TEMPERATURE: ----- -30 °C TO +95 °C (OPERATING)
----- -55 °C TO +125 °C (STORAGE)
- VIBRATION: ----- RANDOM: 20 - 500 Hz
SPECTRAL DENSITY: 0.01g²/Hz
RMS: 2.2 g
- MECHANICAL SHOCK: ----- PEAK: 100 g
DURATION: 4 ms, HALFSINE
- HUMIDITY: ----- 90%
- PRESSURE: ----- OPERATION: 0.6 - 1.4 BAR
STORAGE: 0.3 - 1.4 BAR
VARIATION: ±0.5 BAR
- CORROSION: ----- RESISTANT AGAINST SEAWATER
- MTBF: ----- 200,000 h
- EMC: ----- NO RADIATION

ALL DIMENSIONS
ARE IN INCHES [mm]
TOLERANCES:
X,XX ±0.020
X,XXX ±0.010

PMI CONFIDENTIAL AND PROPRIETARY

NOTE: SPECIFICATIONS WILL VARY OVER OPERATING TEMPERATURE

NOTE: THE ABOVE SPECIFICATIONS ARE SUBJECT TO CHANGE OR REVISION

PLANAR MONOLITHICS INDUSTRIES, INC.
7311-F GROVE ROAD
FREDERICK, MARYLAND 21704 USA
TEL: (301)-662-5019, FAX: (301)-662-1731
WEB: www.pmi-rf.com, EMAIL: sales@pmi-rf.com
ISO 9001 CERTIFIED



APPROVALS		DATE	TITLE			REV.
DRAWN <i>MDL</i>		8/05/2021	OUTLINE P1T-218-60-515-R-SFF			A1
REDRAWN			SIZE A	FSCM NO. 05XQ0	DWG NO. 27042480	
ISSUED			SCALE N:S		SHEET 1 OF 1	