

## DESCRIPTION

PMI MODEL: LM-32G36G-14-20W-SMT IS A HIGH POWER LIMITER CAPABLE OF WITHSTANDING AN INPUT POWER LEVEL OF 20 WATTS, 30  $\mu$ s PULSE WIDTH, 30% DUTY CYCLE. THIS MODEL OPERATES IN THE 32 GHz TO 36 GHz FREQUENCY RANGE. THE INSERTION LOSS IS 2.0 dB MAXIMUM, VSWR OF 2.0:1, AND 250 ns RESPONSE TIME. THIS LIMITER IS SUPPLIED MOUNTED IN A TEST FIXTURE.

## SPECIFICATIONS

- \* FREQUENCY RANGE: ----- 32 GHz TO 36 GHz
- \* INSERTION LOSS: ----- 2.0 dB MAXIMUM
- \* PEAK POWER: ----- 20 WATTS (43 dBm)
- \* PULSE WIDTH: ----- 30  $\mu$ s
- \* DUTY CYCLE: ----- 30%
- \* LEAKAGE POWER: ----- +14 dBm TYPICAL
- \* 1 dB RECOVERY TIME: ----- 250 ns MAXIMUM
- \* VSWR: ----- 2.0:1
- \* SIZE: ----- [L] 0.270" x [W] 0.198" x [H] 0.016" WITHOUT CARRIER  
[L] 1.200" x [W] 0.698" x [H] 0.200" INSIDE TEST FIXTURE\*

\*TEST FIXTURE PROVIDED WITH THE UNIT

## ENVIRONMENTAL RATINGS

- \* TEMPERATURE: ----- -55 °C TO +85 °C (OPERATING)  
-65 °C TO +125 °C (STORAGE)
- \* HUMIDITY: ----- MIL-STD-202, METHOD 103B COND. B
- \* SHOCK: ----- MIL-STD-202, METHOD 213B COND. B
- \* VIBRATION: ----- MIL-STD-202, METHOD 204D COND. B
- \* ALTITUDE: ----- MIL-STD-202, METHOD 105C COND. B
- \* TEMPERATURE CYCLE: ----- MIL-STD-202, METHOD 107D COND. A

NOTE: SPECIFICATIONS WILL VARY OVER OPERATING TEMPERATURE

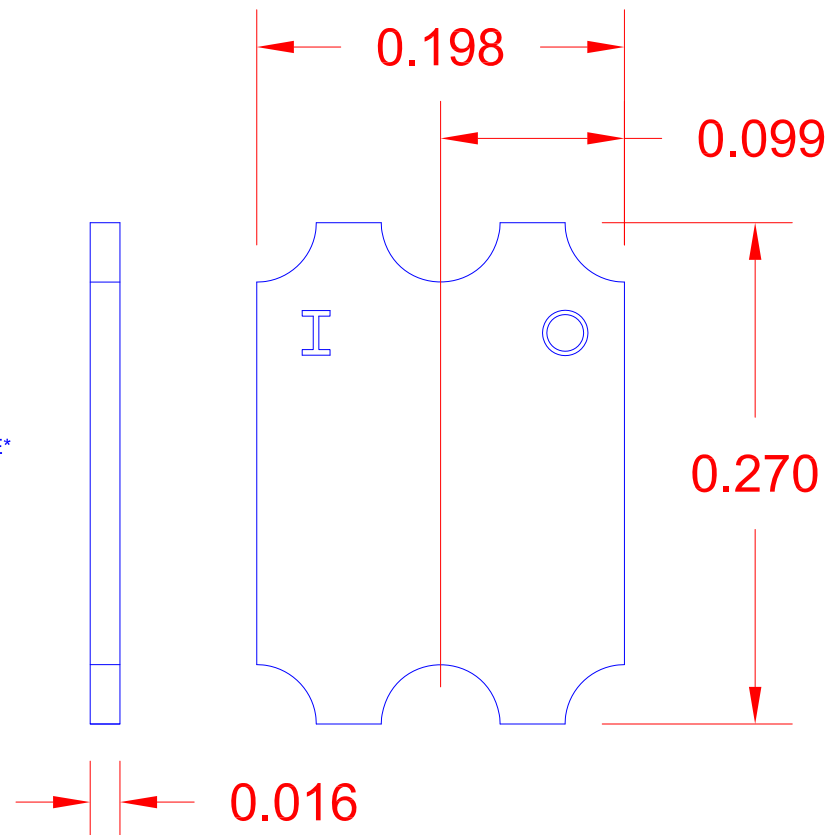
NOTE: THE ABOVE SPECIFICATIONS ARE SUBJECT TO CHANGE OR REVISION

**PMI CONFIDENTIAL AND PROPRIETARY**

ALL DIMENSIONS  
ARE IN INCHES (mm)  
TOLERANCES:  
X.XX  $\pm 0.020$   
X.XXX  $\pm 0.010$

REVISIONS				
ZONE	REV.	DESCRIPTION	DATE	APPROVED
	1	ORIGINAL RELEASE	1/6/2016	

## MECHANICAL OUTLINE



## PLANAR MONOLITHICS INDUSTRIES, INC.

7311-F GROVE ROAD

FREDERICK, MARYLAND 21704 USA

TEL: (301)-662-5019, FAX: (301)-662-1731

WEB: [www.pmi-rf.com](http://www.pmi-rf.com), EMAIL: [sales@pmi-rf.com](mailto:sales@pmi-rf.com)

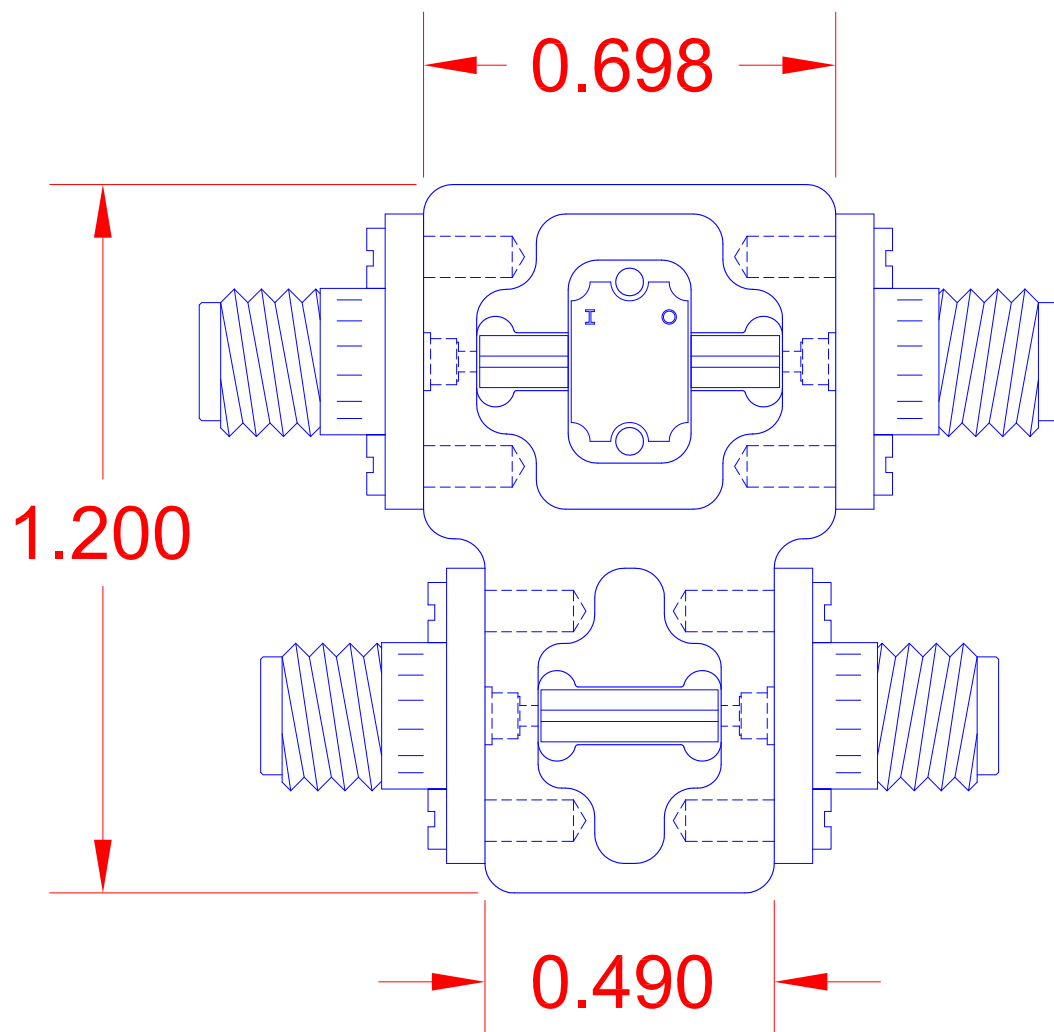
ISO 9001 CERTIFIED



		TITLE  PRODUCT FEATURE LM-32G36G-14-20W-SMT				
APPROVALS	DATE					
DRAWN <i>M. Berry</i>	<i>1/6/16</i>					
CHECKED		SIZE A	FSCM NO. 05XQ0	DWG NO. 27029051	REV 1	
ISSUED		SCALE N:S				SHEET 1 OF 2

## DESCRIPTION

PMI MODEL: LM-32G36G-14-20W-SMT IS A HIGH POWER LIMITER CAPABLE OF WITHSTANDING AN INPUT POWER LEVEL OF 20 WATTS, 30  $\mu$ s PULSE WIDTH, 30% DUTY CYCLE. THIS MODEL OPERATES IN THE 32 GHz TO 36 GHz FREQUENCY RANGE. THE INSERTION LOSS IS 2.0 dB MAXIMUM, VSWR OF 2.0:1, AND 250 ns RESPONSE TIME. THIS LIMITER IS SUPPLIED MOUNTED IN A TEST FIXTURE.

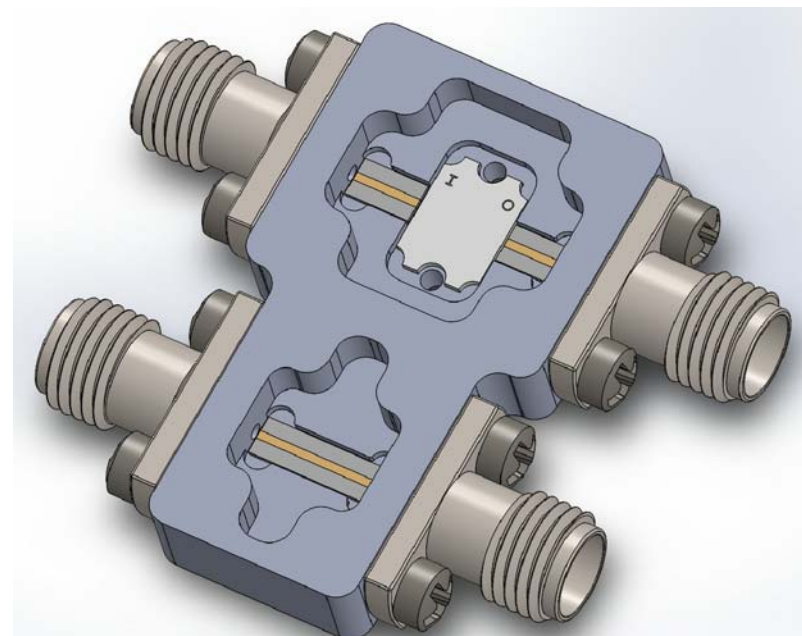


ALL DIMENSIONS  
ARE IN INCHES (mm)  
TOLERANCES:  
X.XX  $\pm 0.020$   
X.XXX  $\pm 0.010$

**PMI CONFIDENTIAL AND PROPRIETARY**

REVISIONS				
ZONE	REV.	DESCRIPTION	DATE	APPROVED
	1	ORIGINAL RELEASE	1/6/2016	

## MECHANICAL OUTLINE



## PLANAR MONOLITHICS INDUSTRIES, INC.

7311-F GROVE ROAD

FREDERICK, MARYLAND 21704 USA

TEL: (301)-662-5019, FAX: (301)-662-1731

WEB: [www.pmi-rf.com](http://www.pmi-rf.com), EMAIL: [sales@pmi-rf.com](mailto:sales@pmi-rf.com)

ISO 9001 CERTIFIED



APPROVALS		DATE		TITLE	
DRAWN <i>M. Berry</i>		1/6/16		PRODUCT FEATURE	
CHECKED				LM-32G36G-14-20W-SMT	
ISSUED				SIZE A	REV. 1
				FSCM NO. 05XQ0	
				DWG NO. 27029051	
				SCALE N:S	SHEET 2 OF 2