

**DESCRIPTION:**

PMI MODEL NUMBER DTA-2G18G-32-8B-OPT10 IS A NON-REFLECTIVE 8 BIT PROGRAMMABLE 32 dB PIN DIODE ATTENUATOR WITH STEP RESOLUTION AS LOW AS 0.125 dB OVER THE FREQUENCY RANGE OF 10.0 TO 10.3 GHz. THIS MODEL IS OFFERED IN A SLIM LINE HOUSING MEASURING ONLY 0.5" HEIGHT.

**SPECIFICATIONS:**

- FREQUENCY: \_\_\_\_\_ 10.0 GHz TO 10.3 GHz
- MEAN ATTENUATION RANGE: \_\_\_\_\_ 32 dB
- INSERTION LOSS: \_\_\_\_\_ 3 dB MAX
- VSWR: \_\_\_\_\_ 1.5 :1 MAX
- FLATNESS UP TO:
  - 20 dB \_\_\_\_\_ ±1.0 dB TYP
  - 40 dB \_\_\_\_\_ ±1.25 dB TYP
  - 60 dB \_\_\_\_\_ ±3.0 dB TYP
- ACCURACY OF ATTENUATION:
  - 0 dB TO 20 dB \_\_\_\_\_ ±1.0 dB TYP
  - 20 dB TO 40 dB \_\_\_\_\_ ±1.5 dB TYP
  - 40 dB TO 60 dB \_\_\_\_\_ ±2.0 dB TYP
- MINIMUM ATTENUATION STEP: \_\_\_\_\_ 0.125 dB
- OPERATING POWER: \_\_\_\_\_ +20 dBm TYP
- SURVIVAL POWER: \_\_\_\_\_ 1W Average from -65°C to +25°C
- SWITCHING TIME:
  - ON TIME \_\_\_\_\_ 1.0 us MAX
  - OFF TIME \_\_\_\_\_ 0.5 us MAX
- DC POWER SUPPLY: \_\_\_\_\_ +12 to +15V @ 150 mA MAX
- CONNECTORS: \_\_\_\_\_ 2 SMA & 15 PIN Micro-D-Female Shipped with Mating Micro-D Male
- WEIGHT: \_\_\_\_\_ 3.0 oz (85 gm) Approximate
- FINISH: \_\_\_\_\_ PAINTED BLUE
- LOGIC INPUT:
  - LOGIC "0" (BIT OFF) \_\_\_\_\_ -0.3 to +0.8V
  - LOGIC "1" (BIT ON) \_\_\_\_\_ +2.0 to +5.0V

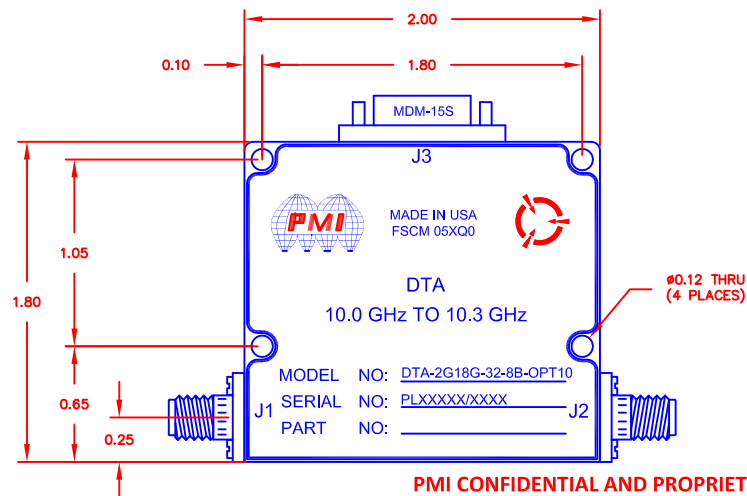
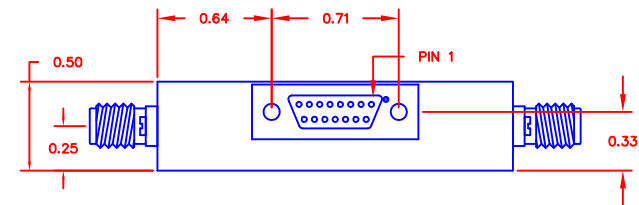
**ENVIRONMENTAL RATINGS:**

- TEMPERATURE: \_\_\_\_\_ -40°C TO +85°C (OPERATING)  
 \_\_\_\_\_ -65°C TO +125°C (STORAGE)
- HUMIDITY: \_\_\_\_\_ MIL-STD-202F, METHOD 103B COND. B
- SHOCK: \_\_\_\_\_ MIL-STD-202F, METHOD 213B COND. B
- VIBRATION: \_\_\_\_\_ MIL-STD-202F, METHOD 204D COND. B
- ALTITUDE: \_\_\_\_\_ MIL-STD-202F, METHOD 105C COND. B
- TEMPERATURE CYCLE: \_\_\_\_\_ MIL-STD-202F, METHOD 107

NOTE: THE ABOVE SPECIFICATIONS ARE SUBJECT TO CHANGE OR REVISION

PIN NO:	J3 PIN FUNCTIONS
1	1dB
2	0.5dB
3	0.25dB
4	0.125dB
5	GND
6	Not Used
7	Not Used
8	GND
9	Not Used
10	Not Used
11	+12VDC
12	16dB (MSB)
13	8dB
14	4dB
15	2dB

REVISIONS				
ZONE	REV.	DESCRIPTION	DATE	APPROVED
	-	PRELIMINARY	10/27/21	



PMI CONFIDENTIAL AND PROPRIETARY

**PLANAR MONOLITHICS INDUSTRIES, INC.**  
 7311-F GROVE ROAD  
 FREDERICK, MARYLAND 21704 USA  
 TEL: 301-662-5019 FAX: 301-662-1731  
 WEBSITE: [www.pmi-rf.com](http://www.pmi-rf.com)  
 E-MAIL: [sales@pmi-rf.com](mailto:sales@pmi-rf.com)  
 ISO 9001 CERTIFIED



APPROVALS		DATE	TITLE			
DRAWN <i>AF</i>		10/27/21	PRODUCT FEATURE			
CHECKED			DTA-2G18G-32-8B-OPT10			
ISSUED			SIZE	FSCM NO.	DWG NO.	REV.
			A	05XQ0	PRELIMINARY	-
			SCALE	N:S	SHEET	1 OF 1

ALL DIMENSIONS ARE IN INCHES  
 TOLERANCES:  
 X.XX ±0.020  
 X.XXX ±0.010