

## DESCRIPTION

THE MODEL P9T-300M2G-60-R-55-SFF IS A HIGH SPEED, SINGLE POLE, NINE THROW, REFLECTIVE SWITCH CAPABLE OF SWITCHING WITHIN 100 ns. THE FREQUENCY RANGE IS 0.3 TO 2.0 GHz. THIS SWITCH HAS OVER 60 dB OF ISOLATION.

## SPECIFICATIONS

- FREQUENCY RANGE: \_\_\_\_\_ 0.3 TO 2.0 GHz
- ISOLATION \_\_\_\_\_ 60 dB Min.
- INSERTION LOSS \_\_\_\_\_ 2.0 dB Max.
- VSWR IN/OUT \_\_\_\_\_ 2.0:1 Max.
- OPERATING INPUT POWER \_\_\_\_\_ 1 Watt CW
- SWITCHING SPEED \_\_\_\_\_ 100 ns Typ.
- DC VOLTAGE AND CURRENT \_\_\_\_\_ +5VDC @ 450mA Max.  
\_\_\_\_\_ -5VDC @ 75mA Max.
- CONTROL SIGNAL \_\_\_\_\_ 4-Line Decoded TTL  
See Table 1
- CONNECTORS \_\_\_\_\_ SMA (F)
- FINISH \_\_\_\_\_ GOLD PLATED
- SIZE \_\_\_\_\_ 4.5" X 1.5" X 0.4"

TABLE 1 - LOGIC

| E1 | E2 | E3 | E4 | Low Loss Path |
|----|----|----|----|---------------|
| 0  | 0  | 0  | 1  | J1 to J2      |
| 0  | 0  | 1  | 0  | J1 to J3      |
| 0  | 0  | 1  | 1  | J1 to J4      |
| 0  | 1  | 0  | 0  | J1 to J5      |
| 0  | 1  | 0  | 1  | J1 to J6      |
| 0  | 1  | 1  | 0  | J1 to J7      |
| 0  | 1  | 1  | 1  | J1 to J8      |
| 1  | 0  | 0  | 0  | J1 to J9      |
| 1  | 0  | 0  | 1  | J1 to J10     |

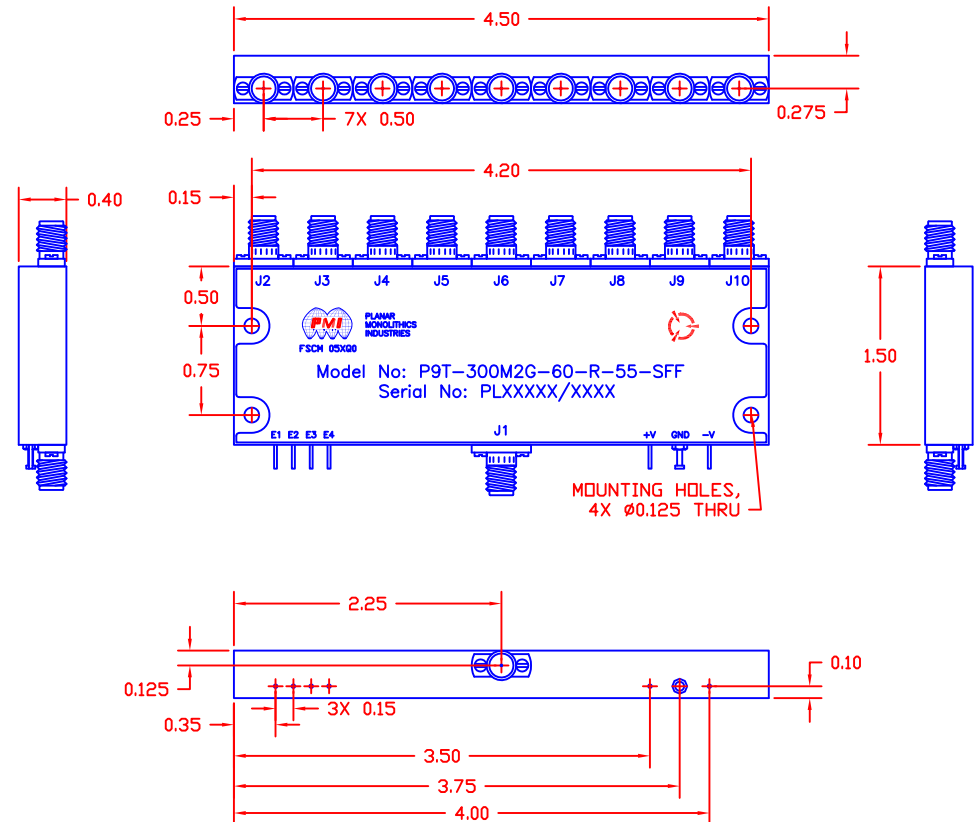
## ENVIRONMENTAL RATINGS

- TEMPERATURE: \_\_\_\_\_ -54°C TO +85°C (OPERATING)  
\_\_\_\_\_ -65°C TO +125°C (STORAGE)
- HUMIDITY: \_\_\_\_\_ MIL-STD-202F, METHOD 103B COND. B
- SHOCK: \_\_\_\_\_ MIL-STD-202F, METHOD 213B COND. B
- VIBRATION: \_\_\_\_\_ MIL-STD-202F, METHOD 204D COND. B
- ALTITUDE: \_\_\_\_\_ MIL-STD-202F, METHOD 105C COND. B
- TEMPERATURE CYCLE: \_\_\_\_\_ MIL-STD-202F, METHOD 107D COND. A

NOTE: SPECIFICATIONS WILL VARY OVER OPERATING TEMPERATURE  
NOTE: THE ABOVE SPECIFICATIONS ARE SUBJECT TO CHANGE OR REVISION

ALL DIMENSIONS ARE IN INCHES  
TOLERANCES:  
X.XX ±0.020  
X.XXX ±0.010  
WEIGHT: 2.75 oz.

| REVISIONS |      |             |          |          |
|-----------|------|-------------|----------|----------|
| ZONE      | REV. | DESCRIPTION | DATE     | APPROVED |
|           | 1    | PRELIMINARY | 02/09/17 |          |



PMI CONFIDENTIAL AND PROPRIETARY

## PLANAR MONOLITHICS INDUSTRIES, INC.

7311-F GROVE ROAD  
FREDERICK, MARYLAND 21704 USA  
TEL: 301-662-5019 FAX: 301-662-1731  
WEBSITE: [www.pmi-rf.com](http://www.pmi-rf.com)  
E-MAIL: [sales@pmi-rf.com](mailto:sales@pmi-rf.com)  
ISO 9001 CERTIFIED



| APPROVALS           |          | DATE    | TITLE  |  |   |
|---------------------|----------|---------|--|--|---|
| DRAWN<br><i>EMF</i> |          | 2/9/17  | PRODUCT FEATURE                                  |  |   |
| CHECKED             |          |         | P9T-300M2G-60-R-55-SFF                           |  |   |
| ISSUED              |          |         | 0.3 TO 2.0 GHz HIGH SPEED SP9T REFLECTIVE SWITCH |  |   |
| SIZE                | FSCM NO. | DWG NO. | REV.   |  |   |
| A                   | 05XQ0    |         | PRELIMINARY                                      |  | - |
| SCALE N:S           |          |         | SHEET 1 OF 1                                     |  |   |