

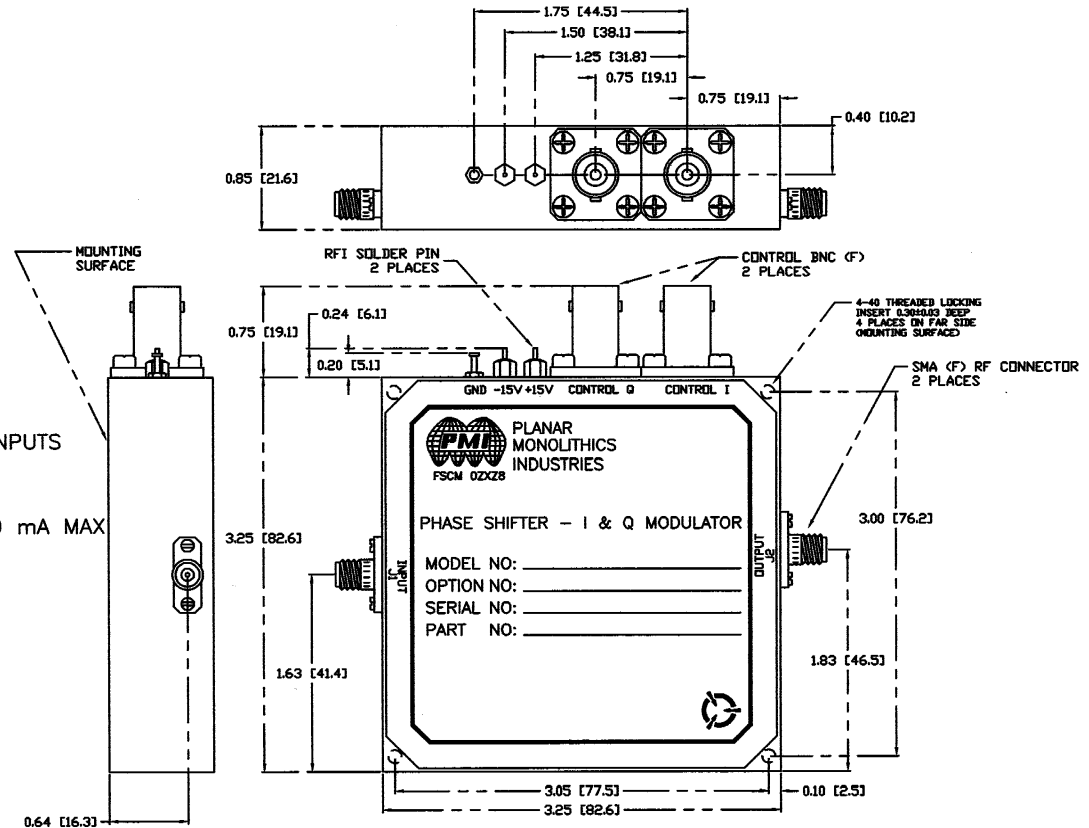
**DESCRIPTION:**

PMI MODEL PS-360-AC IS A 8.5-10 GHz ANALOG CONTROLLED PHASE SHIFTER/I & Q HIGH SPEED MODULATOR. THE PS-360-AC HAS LOW SPURIOUS HARMONICS. IT IS DESIGNED FOR +15/-15 SUPPLY VOLTAGE WITH LOW INSERTION LOSS, VSWR:2:1, SMA FEMALE RF CONNECTORS AND BNC FEMALE CONTROL CONNECTORS FOR THE I & Q.

| REVISIONS |      |                      |          |          |
|-----------|------|----------------------|----------|----------|
| ZONE      | REV. | DESCRIPTION          | DATE     | APPROVED |
|           | A    | ORIGINAL JOB#00527PE | 09/06/02 |          |

**SPECIFICATIONS**

- FREQUENCY RANGE: ..... 8.5 GHz TO 10 GHz
- INSERTION LOSS: ..... 12 dB MAXIMUM
- VSWR: ..... 2:1
- ATTENUATION RANGE: ..... 20 dB MINIMUM
- ABSOLUTE PHASE ACCURACY: ..... ±15° MAXIMUM
- POWER HANDLING:  
(WITHOUT DEGRADATION): ..... 100 mW CW OR PEAK
- CONTROL INPUT: ..... 0 TO +10V DC FOR BOTH I AND Q INPUTS
- RESPONSE TIME (MAX): ..... 0.5 μsec MAXIMUM, 50 nsec TYPICAL
- POWER SUPPLY: ..... ±12....15 VOLTS @ 120 mA TYP, 150 mA MAX
- CONNECTORS:  
RF INPUT/OUTPUT: ..... SMA FEMALE  
POWER: ..... SOLDER PIN  
CONTROL: ..... SOLDER PIN
- CONTROL INPUT IMPEDANCE: ..... 10 K OHMS
- SIZE: ..... 3.25" x 3.25" x 0.85"
- WEIGHT: ..... 1 OUNCES MAXIMUM




ALL DIMENSIONS ARE IN INCHES  
TOLERANCES:  
X.XX ±0.020  
X.XXX ±0.010

**ENVIRONMENTAL RATINGS:**

- TEMPERATURE: ..... -54°C TO +100°C (OPERATING)  
..... -65°C TO +125°C (STORAGE)
- HUMIDITY: ..... MIL-STD-202F, METHOD 103B COND. B (96 HRS AT 95%)
- SHOCK: ..... MIL-STD-202F, METHOD 213B COND. B (75G 6 msec)
- VIBRATION: ..... MIL-STD-202F, METHOD 204D COND. B (0.06" DOUBLE AMPLITUDE OR 15 G WHICHEVER IS LESS)
- ALTITUDE: ..... MIL-STD-202F, METHOD 105C COND. B (50,000 FEET)
- TEMPERATURE CYCLE: ..... MIL-STD-202F, METHOD 107D COND. A (5 CYCLES)

NOTE: THE ABOVE SPECIFICATIONS ARE SUBJECT TO CHANGE OR REVISION

|                           |         |  |              |
|---------------------------|---------|--|--------------|
| PART NO.                  |         |  PLANAR MONOLITHICS INDUSTRIES<br>FREDERICK, MARYLAND |              |
| APPROVALS                 | DATE    | TITLE  |              |
| DRAWN<br><i>S. TURNER</i> | 9/06/02 | PRODUCT FEATURE  |              |
| CHECKED                   |         | PS-360-AC OPTION 810, 7224, IQ RH<br>PHASE SHIFTER / I & Q MODULATOR   |              |
| ISSUED                    |         | SIZE FSCM NO.  | DWG NO.      |
|                           |         | A 0ZXXZ8   | 100-6191     |
|                           |         | SCALE N/S  | REV. A       |
|                           |         |  | SHEET 1 of 3 |