

## DESCRIPTION

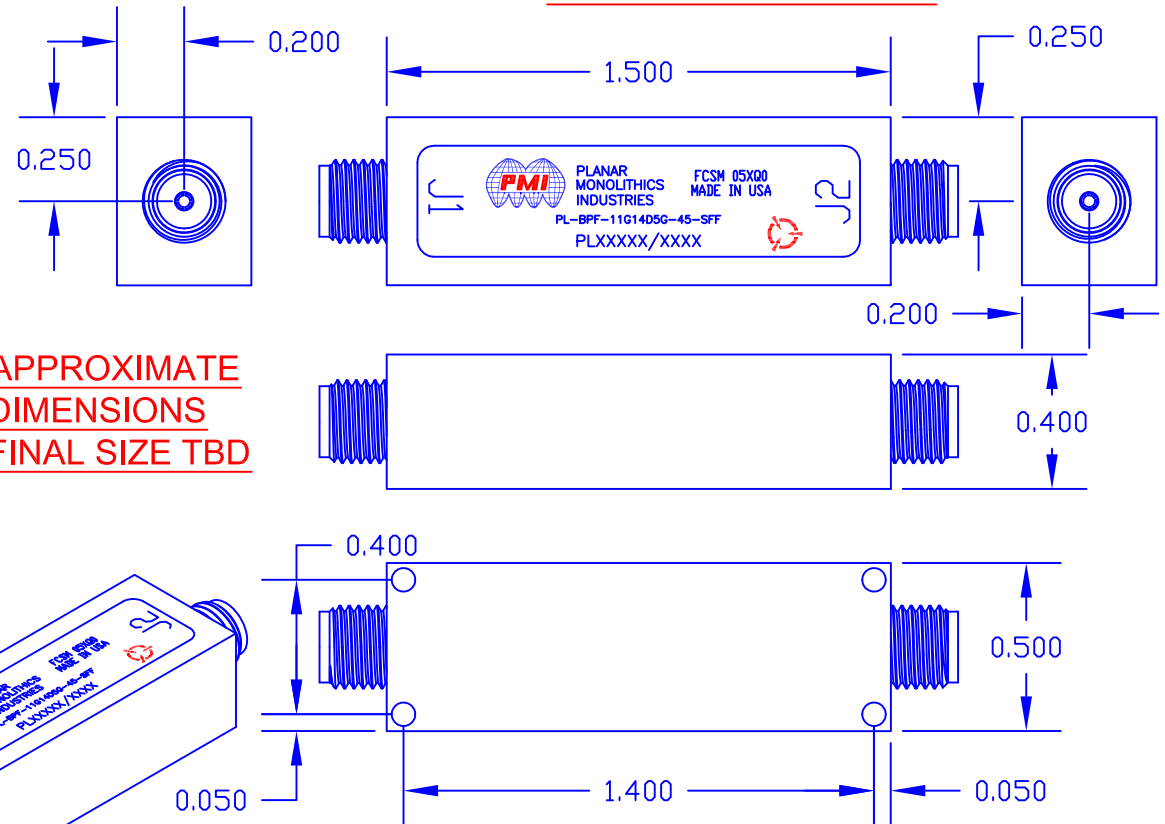
PMI MODEL: PL-BPF-11G14D5G-45-SFF IS A 11 GHz TO 14.5 GHz BANDPASS FILTER WITH 1 dB TYP OF INSERTION LOSS, 20 dBc OF REJECTION AT 7.5 GHz AND 17.5 GHz AND 45 dBc OF REJECTION AT 5.5 GHz AND 20 GHz.

REVISIONS				
ZONE	REV.	DESCRIPTION	DATE	APPROVED
	-	PRELIMINARY	xx/xx/xx	

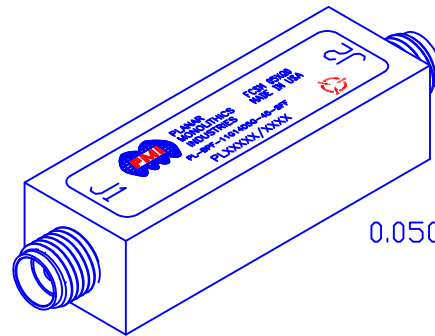
## SPECIFICATIONS

- PASSBAND FREQUENCY (3 dB):- 11 TO 14.5 GHz
- INSERTION LOSS:----- 1 dB TYP
- VSWR:----- 2:1 OVER 90% OF PASSBAND TYP
- REJECTION:----- 20 dBc @ 7.5 GHz  
20 dBc @ 17.5 GHz  
45 dBc @ 5.5 GHz  
45 dBc @ 20 GHz
- CONNECTORS:----- SMA (FEMALE)
- FINISH:----- BLUE EPOXY POLIMIDE COATING IAW MIL-C-22750, TYPE I OVER EPOXY POLIMIDE PRIMER IAW MIL-P-23377, TYPE I, CLASS 1 OR 3.

## MECHANICAL OUTLINE



**APPROXIMATE  
DIMENSIONS  
FINAL SIZE TBD**



## ENVIRONMENTAL RATINGS

- TEMPERATURE: ----- 0 °C TO +55 °C (OPERATING)  
-65 °C TO +125 °C (STORAGE)
- HUMIDITY: ----- MIL-STD-202F, METHOD 103B COND. B
- SHOCK: ----- MIL-STD-202F, METHOD 213B COND. B
- VIBRATION: ----- MIL-STD-202F, METHOD 204D COND. B
- ALTITUDE: ----- MIL-STD-202F, METHOD 105C COND. B
- TEMPERATURE CYCLE: ----- MIL-STD-202F, METHOD 107D COND. A

NOTE: SPECIFICATIONS WILL VARY OVER OPERATING TEMPERATURE  
NOTE: THE ABOVE SPECIFICATIONS ARE SUBJECT TO CHANGE OR REVISION

ALL DIMENSIONS ARE IN INCHES  
TOLERANCES:  
X.XX ±0.020  
X.XXX ±0.010

**PMI CONFIDENTIAL AND PROPRIETARY**

## PLANAR MONOLITHICS INDUSTRIES, INC.

7311-F GROVE ROAD

FREDERICK, MARYLAND 21704 USA

TEL: (301)-662-5019, FAX: (301)-662-1731

WEB: [www.pmi-rf.com](http://www.pmi-rf.com), EMAIL: [sales@pmi-rf.com](mailto:sales@pmi-rf.com)

ISO 9001 CERTIFIED



APPROVALS		DATE	TITLE			REV.
DRAWN CHRIS B.		06/23/15	PRODUCT FEATURE PL-BPF-11G14D5G-45-SFF 11GHz TO 14.5 GHz BANDPASS FILTER			-
CHECKED			SIZE A	FCSM NO. 05XQ0	DWG NO. PRELIMINARY	
ISSUED			SCALE N:S		SHEET 1 OF 1	