

ZONE	REV.	DESCRIPTION	DATE	APPROVED
	A1	ORIGINAL RELEASE	8/3/2018	

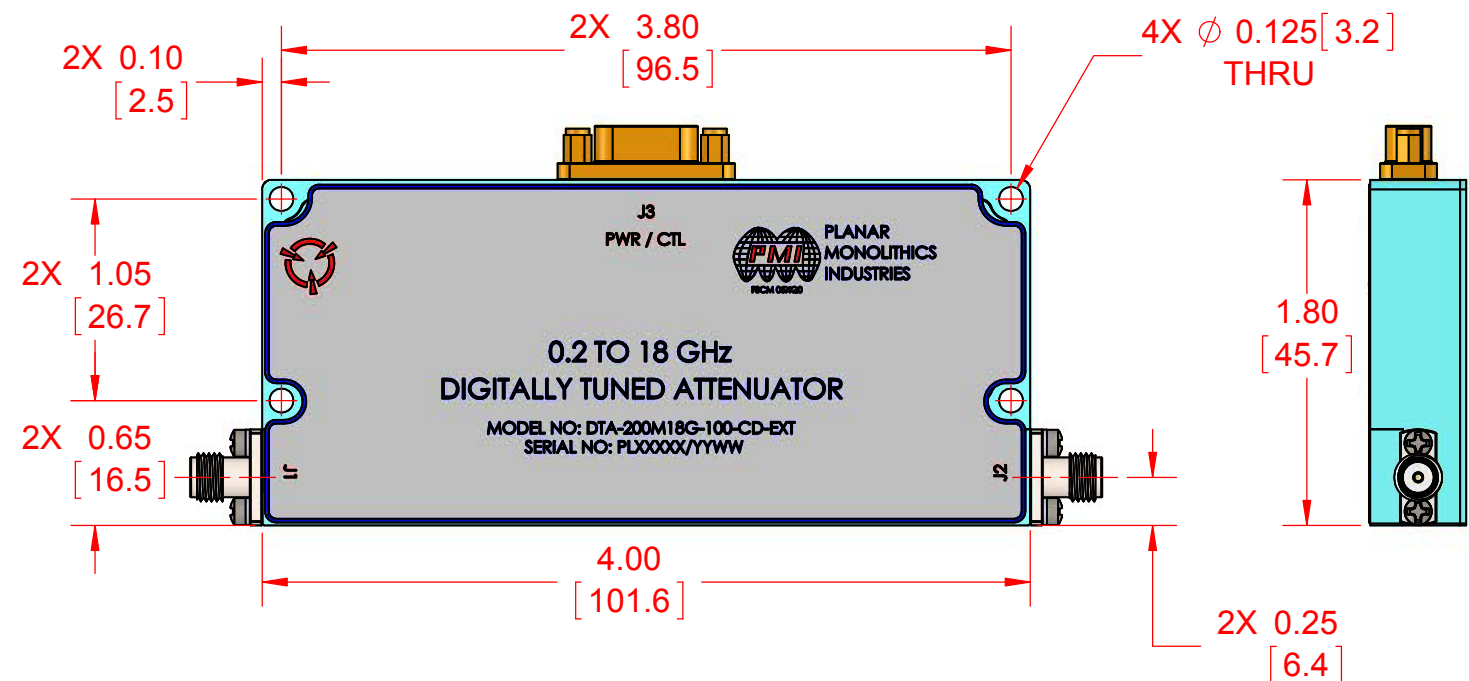
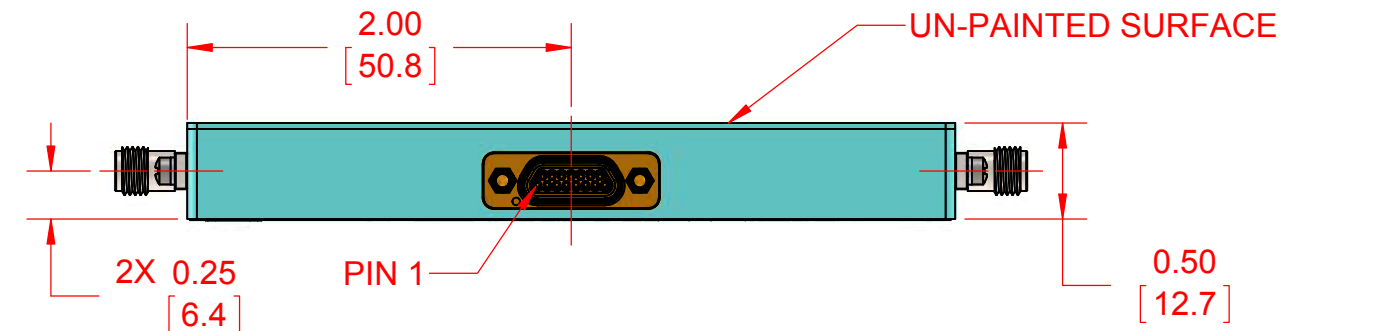
DESCRIPTION:

PLANAR MONOLITHICS INDUSTRIES MODEL NUMBER DTA-200M18G-100-CD-EXT IS AN 8-BIT DIGITALLY TUNED ATTENUATOR DESIGNED FOR THE 200 MHz TO 18 GHz FREQUENCY RANGE USING AN EXTERNAL LATCH TO SET THE ATTENUATION LEVEL.

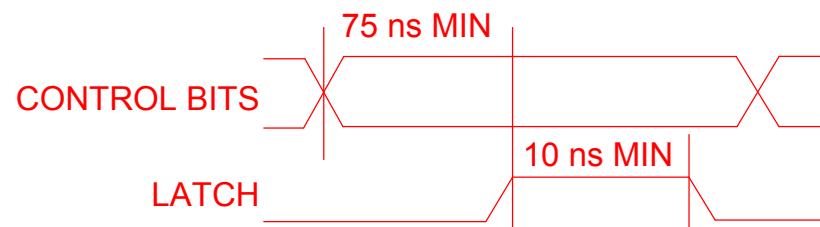
SPECIFICATIONS:

- FREQUENCY:..... 0.2 TO 18 GHz
- RF OPERATING INPUT POWER LEVEL:.. +20 dBm MAXIMUM
- SURVIVAL INPUT POWER LEVEL:..... 1 WATT CW,
10 WATTS PEAK, 1 us PULSE WIDTH,
1% DUTY CYCLE
- INSERTION LOSS:..... 12 dB MAXIMUM
- INPUT / OUTPUT VSWR:..... 2.4 : 1 MAXIMUM
- ATTENUATION RANGE:..... 100 dB MINIMUM
- CONTROL BITS:..... 8 BIT TTL
- LATCH:..... EXTERNAL TTL (SEE TIMING DIAGRAM BELOW)
- ATTENUATION FLATNESS:..... UP TO 20 dB: ±1 dB TYPICAL
UP TO 40 dB: ±1.25 dB TYPICAL
UP TO 60 dB: ±1.5 dB TYPICAL
UP TO 80 dB: ±2 dB TYPICAL
UP TO 100 dB: ±3 dB TYPICAL
- ATTENUATION ACCURACY:..... UP TO 20 dB: ±1 dB TYPICAL
UP TO 40 dB: ±1.25 dB TYPICAL
UP TO 60 dB: ±1.5 dB TYPICAL
UP TO 80 dB: ±2 dB TYPICAL
UP TO 100 dB: ±3 dB TYPICAL
- MINIMUM ATTENUATION STEP:..... 0.5 dB
- TEMPERATURE STABILITY:..... ±0.25 dB OVER OPERATING TEMPERATURE
- SWITCHING SPEED:..... ON: 1 us MAXIMUM
OFF: 0.5 us MAXIMUM
- CONNECTORS:..... RF IN / OUT: SMA (F)
POWER AND CONTROL: 15-PIN MICRO-D FEMALE
- POWER SUPPLIES:..... +8VDC @ 700 mA MAXIMUM
- FINISH:..... PAINTED BLUE
(BOTTOM IS GOLD PLATED)

J3 15-PIN CONNECTOR PIN-OUT	
PIN	FUNCTION
1	4 dB
2	2 dB
3	1 dB
4	LATCH
5	GND
6	N/C
7	N/C
8	GND
9	0.5 dB (LSB)
10	N/C
11	+8VDC
12	64 dB (MSB)
13	32 dB
14	16 dB
15	8 dB



TIMING DIAGRAM



ENVIRONMENTAL RATINGS:

- TEMPERATURE:..... +55°C ± 1°C (OPERATING)
-45°C TO +85°C (STORAGE)

NOTE: SPECIFICATIONS WILL VARY OVER OPERATING TEMPERATURE
NOTE: THE ABOVE SPECIFICATIONS ARE SUBJECT TO CHANGE OR REVISION

PMI CONFIDENTIAL AND PROPRIETARY

<p>UNLESS OTHERWISE SPECIFIED DIMENSIONS ARE IN INCHES [MM] TOLERANCES ARE: FRACTIONS DECIMALS ANGLES ± .XX ± 0.02 ± ± .XXX ± 0.01</p>		<p>APPROVALS DATE</p> <p>DRAWN M. HANKEN 8/26/2018</p> <p>REISSUED</p>		<p>PLANAR MONOLITHICS INDUSTRIES, INC.</p> <p>7311-F GROVE ROAD FREDERICK, MARYLAND 21704 USA TEL: (301)-862-5019, FAX: (301)-662-1731 WEB: www.pmi-rf.com, EMAIL: sales@pmi-rf.com ISO 9001 CERTIFIED</p>	
<p>TITLE</p> <p>OUTLINE</p> <p>DTA-200M18G-100-CD-EXT</p>			SIZE	FSCM NO.	DWG NO.
			B	05XQ0	27037240
			SCALE 1:1	SHEET 1 OF 1	