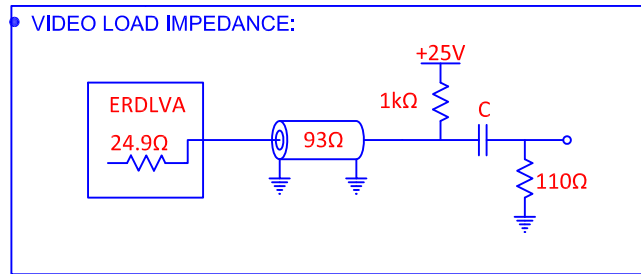


DESCRIPTION:

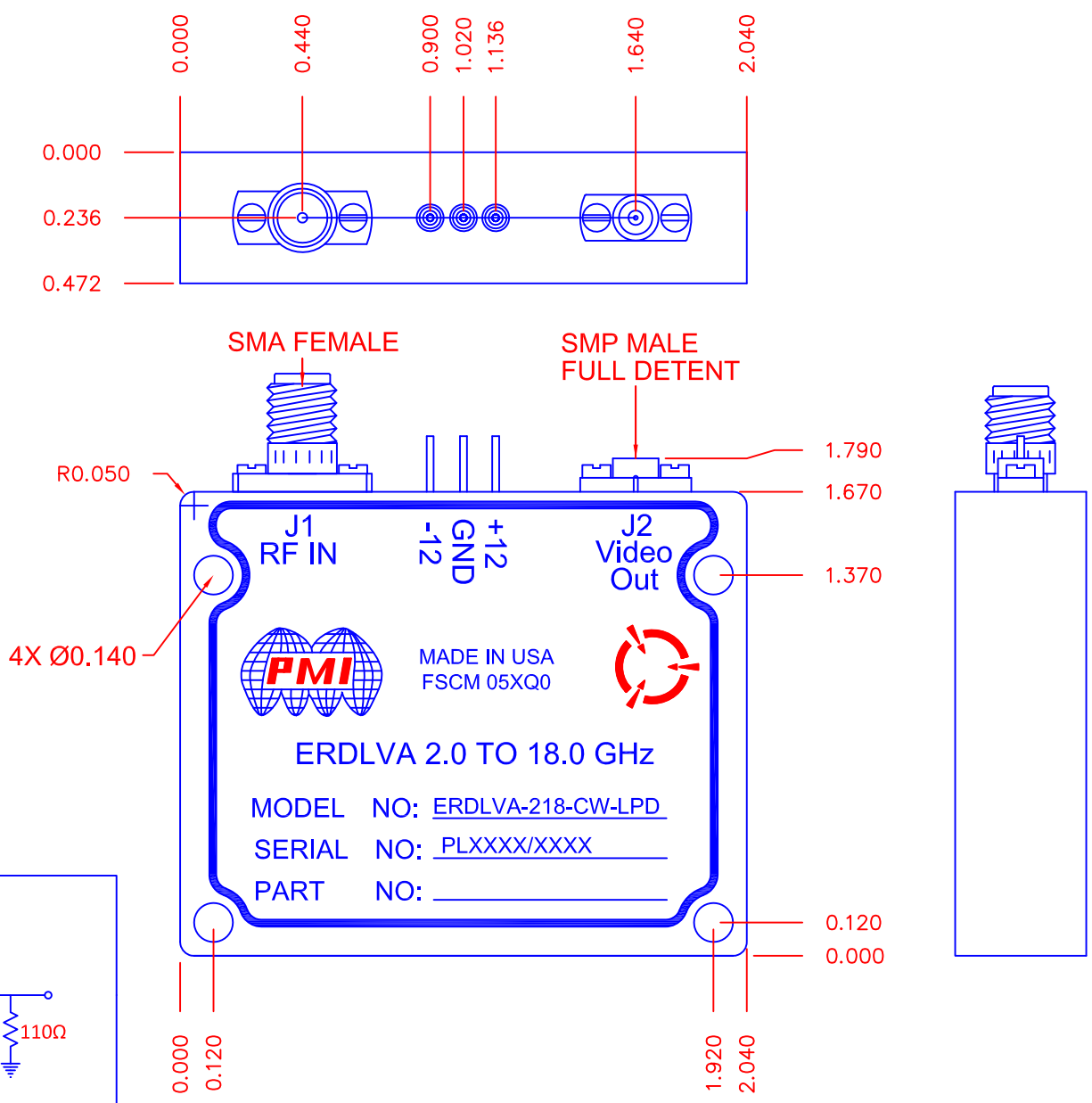
PMI MODEL NUMBER ERDLVA-218-CW-LPD IS A CW IMMUNE ERDLVA (EXTENDED RANGE DETECTOR LOGARITHMIC VIDEO AMPLIFIER) DESIGNED FOR LOW TOTAL POWER CONSUMPTION. THIS UNIT OPERATES FROM 2 -18GHZ, AND HAS THE ABILITY TO INTERFACE WITH A LONG CABLE (>100ft). IT MAINTAINS HIGH SPEED, FLATNESS AND ACCURACY ALL IN A SMALL FOOTPRINT.

SPECIFICATIONS:

- FREQUENCY: 2.0 GHz TO 18.0 GHz
- FLATNESS: ± 2.0dB MAXIMUM
- TSS: -64 dBm MINIMUM
- MAXIMUM NOISE: 100mV RMS (INPUT TERMINATED)
- VSWR: 2.0:1 MAXIMUM
- MAXIMUM INPUT POWER WITHOUT DAMAGE: +30 dBm CW MAXIMUM
+ 50 dBm PEAK PULSE, 1% DUTY CYCLE, 10uS
- LOG SLOPE: 77 mV/dB (±5mV)
- VIDEO OUTPUT RANGE: -0.5V (-60dBm) < RF IN < -5.5V (4dBm)
- DC OFFSET: ±150 mV
- LOG RANGE: -60 to +4 dBm MINIMUM
- LOG LINEARITY: ±1.50 dB (-20°C +85°C) MAXIMUM
- LOG LINEARITY: ±1.75 dB (-54°C +95°C) MAXIMUM
- PULSE RANGE: 200 nS to 20uS
- PROPAGATION DELAY: 30nS
- RISE TIME: 35nS MAX (20 nS TYP)
- SETTLLING TIME TO BE ±1 dB: 50nS
- RECOVERY TIME: 500 nS MAX (200 nS Typ)
- DUTY CYCLE: 80% AT MAXIMUM PW
50% AT MINIMUM PW
- CW IMMUNITY RANGE: TSS TO -40dBm
- PULSE CONSIDERED "CW": 900uS
- BASELINE SHIFT: 25 mV MAXIMUM
- REJECTION TIME: 1 mS
- DROOP: 1 dB MAXIMUM
- POWER SUPPLY: ±10.8V to ±12.5V
- MAXIMUM POWER: 3.9W (BOTH SUPPLIES)
- WEIGHT: 8 OZ MAXIMUM
- RELIABILITY @ 95°C: 75,000 HOURS MINIMUM PER MIL-HDBK-217F, NOTICE 2, AUF
- PACKAGE: HERMETIC
- FINISH: PAINTED BLUE



REVISIONS				
ZONE	REV.	DESCRIPTION	DATE	APPROVED
	A	ORIGINAL RELEASE	3/11/11	



ENVIRONMENTAL RATINGS:

- TEMPERATURE: -54°C TO +95°C (OPERATING)
-62°C TO +95°C (STORAGE)
- High Temperature Operation: MIL-STD-810G, Method 501.5, Procedure II
- Low Temperature: MIL-STD-810G, Method 502.5, Procedure I (Storage), And Procedure II (Operational)
- Temperature Shock: MIL-STD-810G, Method 503.5, Procedure I-C
- Temperature cycle: MIL-STD-810G, Figure 503.5-3
- Humidity: MIL-STD-810G, Method 507.5, Procedure II
- Vibration: PER SRC DWG. NO.: 1000443, REV. E02, Paragraph 4.1.5
- Shock: MIL-STD-810G, Method 516.6, Procedure I
- Acoustic Noise Susceptibility: MIL-STD-810G, Method 515.6, Procedure I, Figure 516.6A-1
- Fungus: MIL-STD-810C, METHOD 508.2

NOTE: THE ABOVE SPECIFICATIONS ARE SUBJECT TO CHANGE OR REVISION

ALL DIMENSIONS ARE IN INCHES
TOLERANCES:
X.XX ±0.010

PLANAR MONOLITHICS INDUSTRIES, INC.

7311-F GROVE ROAD
FREDERICK, MARYLAND 21704 USA
TEL: 301-662-5019 FAX: 301-662-1731
WEBSITE: www.pmi-rf.com
E-MAIL: sales@pmi-rf.com
ISO 9001:2008 CERTIFIED



APPROVALS		DATE	TITLE		
DRAWN <i>PJK</i>		3/11/11	PRODUCT FEATURE ERDLVA-218-CW-LPD		
CHECKED			SIZE A	FSCM NO. 05XQ0	DWG NO. 27014104
ISSUED			SCALE N:S		REV. A
					SHEET 1 OF 1