

## DESCRIPTION

PMI MODEL NUMBER PS-500M2G-10B-SFF-E IS A 0.4 TO 2GHz DIGITALLY CONTROLLED ANALOG PHASE SHIFTER WITH CAPABILITY FOR PHASE SHIFTING FROM 0° TO 360°. THE UNIT CONSISTS OF AN ANALOG PHASE SHIFTER AND A DIGITAL-TO-ANALOG CONVERTER. TEN LOGIC INPUT LINES ALLOW 1024 DISCRETE VALUES OF PHASE.

## SPECIFICATIONS

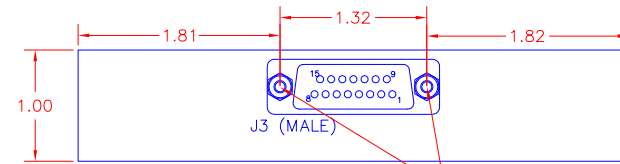
- FREQUENCY RANGE: 0.4 TO 2 GHz
- CONTROL: 10 BIT TTL
- INSERTION LOSS: 13dB MAX
- PHASE SHIFT: 360° TYP
- AMPLITUDE ERROR: ±1.0 dB MAX.
- PHASE SHIFT ERROR: ±5° MAX.
- SWITCHING SPEED: 500 nsec MAX.
- POWER SUPPLY
  - +V: +15V @ 250 mA TYP.
  - V: -15V @ 20 mA TYP.
- SIZE: 4.95" X 3.38" X 1.00"
- WEIGHT: 14 OZ.
- CONNECTORS(RF): SMA FEMALE
- CONNECTOR (CONTROL): 15 PIN SUBMINIATURE D (MALE)
- FINISH: BLUE EPOXY POLIMIDE COATING IAW MIL-C-22750, TYPE I OVER EPOXY POLIMIDE PRIMER IAW MIL-P-23377, TYPE I, CLASS 1 OR 3.

## ENVIRONMENTAL RATINGS

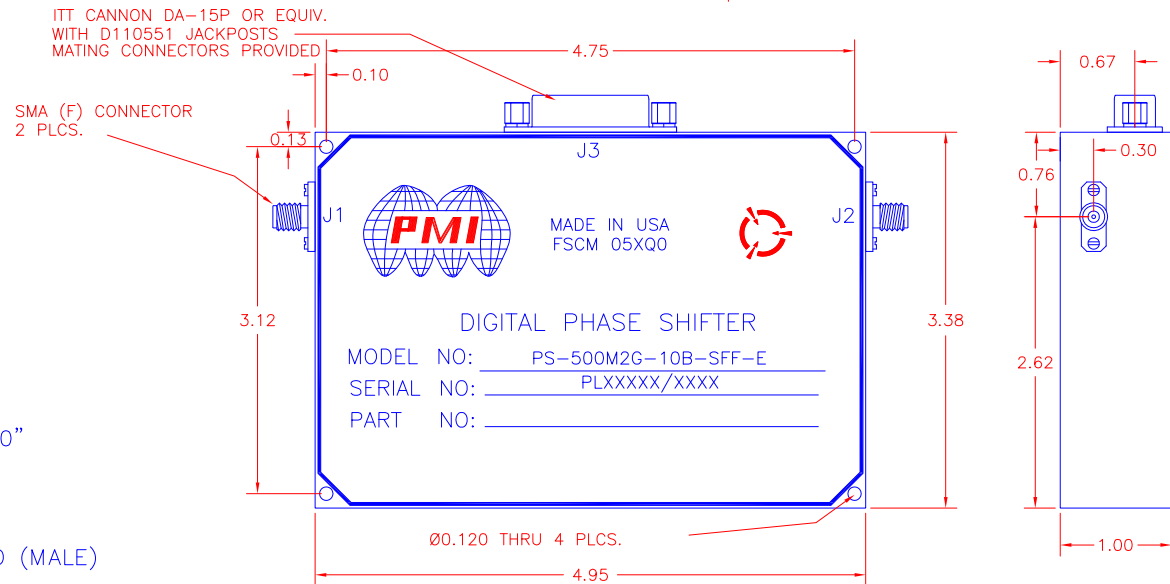
- TEMPERATURE: -55°C TO +85°C (OPERATING)  
-65°C TO +125°C (STORAGE)
- HUMIDITY: MIL-STD-202F, METHOD 103B COND. B
- SHOCK: MIL-STD-202F, METHOD 213B COND. B
- VIBRATION: MIL-STD-202F, METHOD 204D COND. B
- ALTITUDE: MIL-STD-202F, METHOD 105C COND. B
- TEMPERATURE CYCLE: MIL-STD-202F, METHOD 107D COND. A

NOTE: SPECIFICATIONS WILL VARY OVER OPERATING TEMPERATURE  
NOTE: THE ABOVE SPECIFICATIONS ARE SUBJECT TO CHANGE OR REVISION

REVISIONS				
ZONE	REV.	DESCRIPTION	DATE	APPROVED
	-	PRELIMINARY	1/20/15	



Accepts 4-40 UNC-2B SCREW



ELECTRICAL CONNECTOR PIN ASSIGNMENTS

PIN LETTER	FUNCTION
1	0.35 DEGREES
2	0.7 DEGREES
3	1.41 DEGREES
4	2.81 DEGREES
5	5.63 DEGREES
6	11.25 DEGREES
7	22.5 DEGREES
8	45 DEGREES
9	90 DEGREES
10	180 DEGREES
11	NC
12	NC
13	+ 15 VDC
14	- 15 VDC
15	GROUND

ALL DIMENSIONS ARE IN INCHES  
TOLERANCES:  
X.XX ±0.020  
X.XXX ±0.010

PMI CONFIDENTIAL AND PROPRIETARY

## PLANAR MONOLITHICS INDUSTRIES, INC.

7311-F GROVE ROAD  
FREDERICK, MARYLAND 21704 USA  
TEL: 301-662-5019 FAX: 301-662-1731  
WEBSITE: [www.pmi-rf.com](http://www.pmi-rf.com)  
E-MAIL: [sales@pmi-rf.com](mailto:sales@pmi-rf.com)  
ISO 9001 CERTIFIED



APPROVALS		DATE	TITLE			
DRAWN <i>BFB</i>		2/3/11	PRODUCT FEATURE			
MODIFIED <i>JS</i>		1/20/15	PS-500M2G-10B-SFF-E			
ISSUED			0.4-2.0GHz, 0°-360° PHASE SHIFTER			
SIZE	FSCM NO.	DWG NO.	PRELIMINARY		REV.	
A	05XQ0				-	
SCALE N:S			SHEET 1 OF 1			