

### Description:

Low Noise Amplifier designed for Military and Industrial applications. This amplifier is supplied in our standard PE2 housing that can be used as a SMA connectorized or a surface mount component. Other packages and connector types are available.

This model provides the following performance. Data is available upon request.

### Specifications:

Frequency Range: 1.0 to 8.0 GHz  
Gain: 15dB Typ.  
Gain Flatness: +/-1.0dB Max.  
Noise Figure: 4.5dB Typ.  
OP1dB: 20dBm Min.  
VSWR Input/Output: 2.0:1 Max.  
DC Voltage Supply: +12 to +15VDC  
DC Current Draw: 225mA Max.

### Features:

Internal Voltage Regulation  
Unconditional Stability  
Standard Operating Temperature -20 to +70 Deg. C

### Available Options:

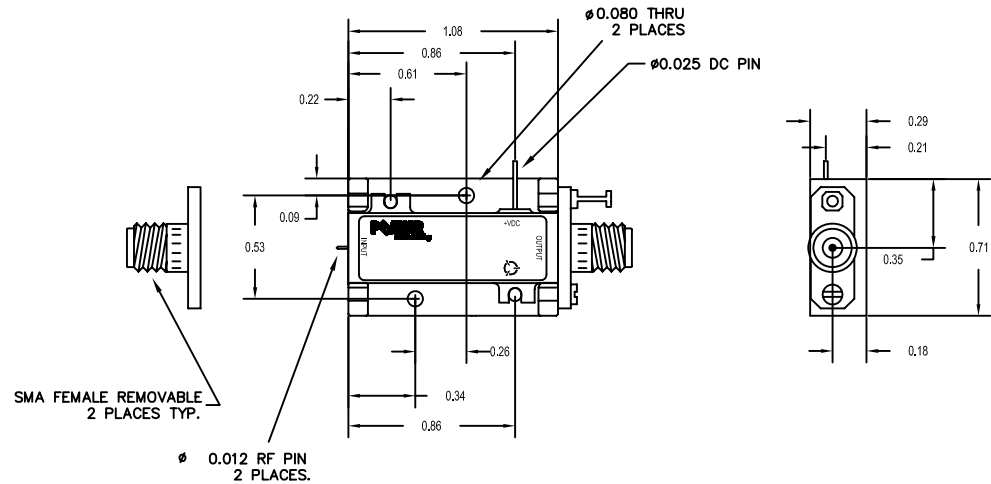
Various Package types  
Various Connector types  
Temperature Compensation  
Hermetic Sealing  
Gain and Phase Matching  
MIL-STD-883 Screening Available

### Environmental Ratings:

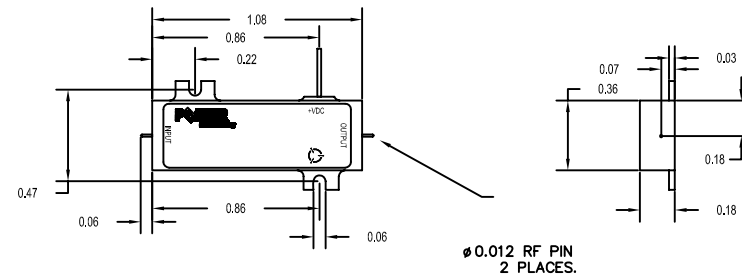
Temperature: -20 to +70 Deg. C (Operating) ; -55 to +85 Deg C Available)  
-55 to +125 Deg. C (Storage)  
Humidity: MIL-STD-202F, METHOD 103B COND B.  
Shock: MIL-STD-202F, METHOD 213B COND B.  
Altitude: MIL-STD-202F, METHOD 105C COND B.  
Temperature Cycle: MIL-STD-202F, METHOD 107D COND A

Note: The above specifications are subject to change or revision.

### PE2 HOUSING WITH CARRIER



### PE2 HOUSING WITHOUT CARRIER (SURFACE MOUNT)



UNLESS OTHERWISE SPECIFIED  
DIMENSIONS ARE IN INCHES  
TOLERANCES ARE:  
FRACTIONS DECIMALS ANGLES  
± .XX ± 0.010 ±  
± .XXX ± 0.005 ±

| PART NO.             |  | REVISIONS              |  | DATE    |  | APPROVED |  |
|----------------------|--|------------------------|--|---------|--|----------|--|
| 6061-T6 Aluminum     |  | K Mason                |  | 2/21/08 |  | 2/21/08  |  |
| FINISH:              |  | GOLD PLATE OVER NICKEL |  | SCALE   |  | N/A      |  |
| DO NOT SCALE DRAWING |  | DRAWN                  |  | CHECKED |  | FILED    |  |
| MATERIAL:            |  | 6061-T6 Aluminum       |  | DATE    |  | 2/21/08  |  |
| FINISH:              |  | GOLD PLATE OVER NICKEL |  | SCALE   |  | N/A      |  |
| DO NOT SCALE DRAWING |  | DRAWN                  |  | CHECKED |  | FILED    |  |
| MATERIAL:            |  | 6061-T6 Aluminum       |  | DATE    |  | 2/21/08  |  |
| FINISH:              |  | GOLD PLATE OVER NICKEL |  | SCALE   |  | N/A      |  |
| DO NOT SCALE DRAWING |  | DRAWN                  |  | CHECKED |  | FILED    |  |
| MATERIAL:            |  | 6061-T6 Aluminum       |  | DATE    |  | 2/21/08  |  |
| FINISH:              |  | GOLD PLATE OVER NICKEL |  | SCALE   |  | N/A      |  |
| DO NOT SCALE DRAWING |  | DRAWN                  |  | CHECKED |  | FILED    |  |