

DESCRIPTION

PMI MODEL PAT-3D1G3D5G-CD-SFF-NF IS A BI-DIRECTIONAL VARIABLE ATTENUATOR THAT OPERATES BETWEEN 3.1 AND 3.5 GHz. AT THE LOW LOSS STATE THE INSERTION LOSS IS BETTER THAN 1.1 dB, AND IN THE ATTENUATION STATE THERE IS 30 dB OF LOSS.

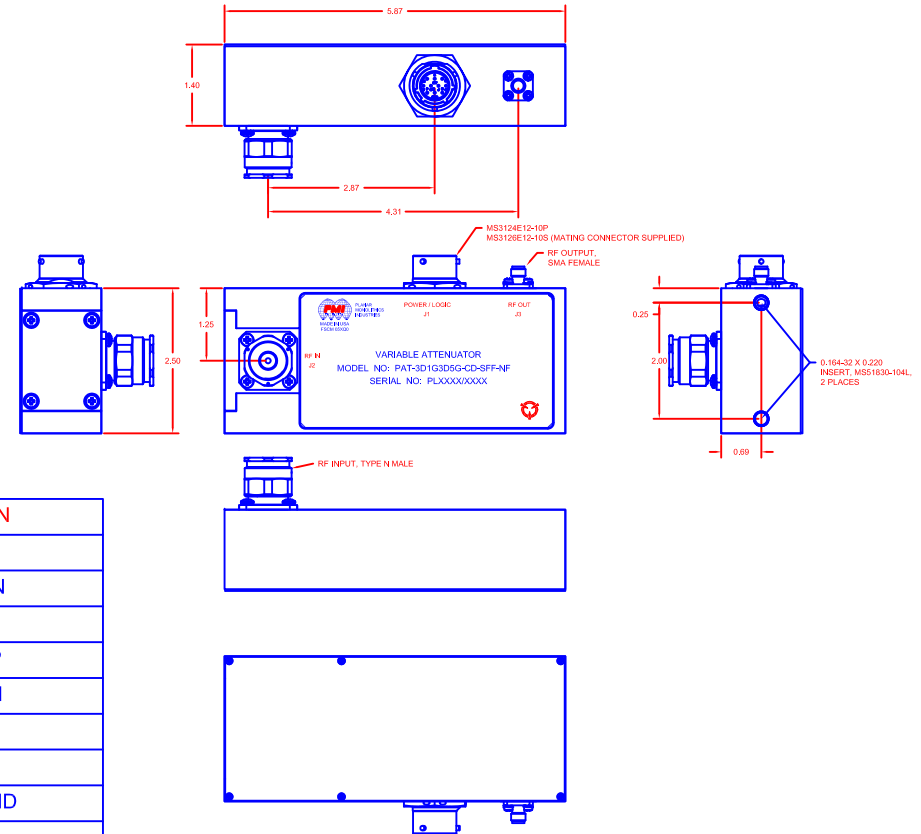
SPECIFICATIONS

- FREQUENCY RANGE:----- 3.1 TO 3.5 GHz
- INPUT POWER: ----- +10 dBm CW
- POWER HANDLING (WITHOUT DAMAGE): ----- 0.5 W PEAK POWER
256us pulse width, 0.06 duty factor.
- LOW LOSS STATE:
INSERTION LOSS: ----- 1.10 dB MAX (BI-DIRECTIONAL)
VARIATION IN LOSS: ----- ± 0.2 dB OVER ANY 10 MHz
VSWR: ----- 1.20 : 1 MAX
INSERTION LOSS MATCHING: ----- ± 0.2 dB FROM GOLDEN UNIT
PHASE MATCHING: ----- ± 3° FROM GOLDEN UNIT
- ATTENUATION STATE:
ATTENUATION: ----- 30 dB ± 1.0 dB (BI-DIRECTIONAL)
VARIATION IN ATTENUATION:----- ± 0.2 dB OVER ANY 10 MHz
VSWR: ----- 1.25 : 1 MAX
INSERTION LOSS MATCHING: ----- ± 0.20 dB FROM GOLDEN UNIT
PHASE MATCHING: ----- ± 3° FROM GOLDEN UNIT
- NOISE FIGURE:
LOW LOSS STATE: ----- 1.10 dB MAX. (BI-DIRECTIONAL)
ATTENUATION STATE: ----- 30 dB ±1.0 dB MAX.
- SWITCHING SPEED:----- 0.5 us MAX
- LOGIC LEVELS: ----- PIN D > PIN E: LOW LOSS STATE
PIN E > PIN D: ATTENUATION STATE (INPUT INTO 26LS32 RECEIVER)
- DC POWER SUPPLY:
+V:----- +15V @ 250 mA MAX
-V:----- -15V @ 100 mA MAX
- SIZE: ----- 5.87" x 2.50" x 1.40"
- FINISH: ----- PAINTED BLUE

PIN	FUNCTION
A	+15V
B	DC RETURN
C	-15V
D	CTL LOGIC P
E	CTL LOGIC N
F	N/C
G	N/C
H	CHASSIS GND
J	N/C
K	N/C

REVISIONS				
ZONE	REV.	DESCRIPTION	DATE	APPROVED
	A1	ORIGINAL RELEASE	4/23/2018	
	A2	ECN # 18-0236	11/30/2018	

MECHANICAL OUTLINE



ENVIRONMENTAL RATINGS

- TEMPERATURE: ----- -55 °C TO +85 °C (OPERATING)
-65 °C TO +125 °C (STORAGE)
- HUMIDITY: ----- MIL-STD-202, METHOD 103B COND. B
- SHOCK: ----- MIL-STD-202, METHOD 213B COND. B
- VIBRATION: ----- MIL-STD-202, METHOD 204D COND. B
- ALTITUDE: ----- MIL-STD-202, METHOD 105C COND. B
- TEMPERATURE CYCLE: ----- MIL-STD-202, METHOD 107D COND. A

NOTE: SPECIFICATIONS WILL VARY OVER OPERATING TEMPERATURE
NOTE: THE ABOVE SPECIFICATIONS ARE SUBJECT TO CHANGE OR REVISION

ALL DIMENSIONS
ARE IN INCHES [mm]
TOLERANCES:
X.XX ±0.020
X.XXX ±0.010

PMI CONFIDENTIAL AND PROPRIETARY

PLANAR MONOLITHICS INDUSTRIES, INC.

7311-F GROVE ROAD

FREDERICK, MARYLAND 21704 USA

TEL: (301)-662-5019, FAX: (301)-662-1731

WEB: www.pmi-rf.com, EMAIL: sales@pmi-rf.com

ISO 9001 CERTIFIED



APPROVALS		DATE	TITLE			
DRAWN	<i>DPD</i>	6/22/10	PRODUCT FEATURE PAT-3D1G3D5G-CD-SFF-NF			
REDRAWN	<i>JPU</i>	4/23/18	SIZE	FSCM NO.	DWG NO.	REV.
ISSUED			A	05XQ0	27034320	A2
			SCALE	N:S	SHEET	1 OF 1