

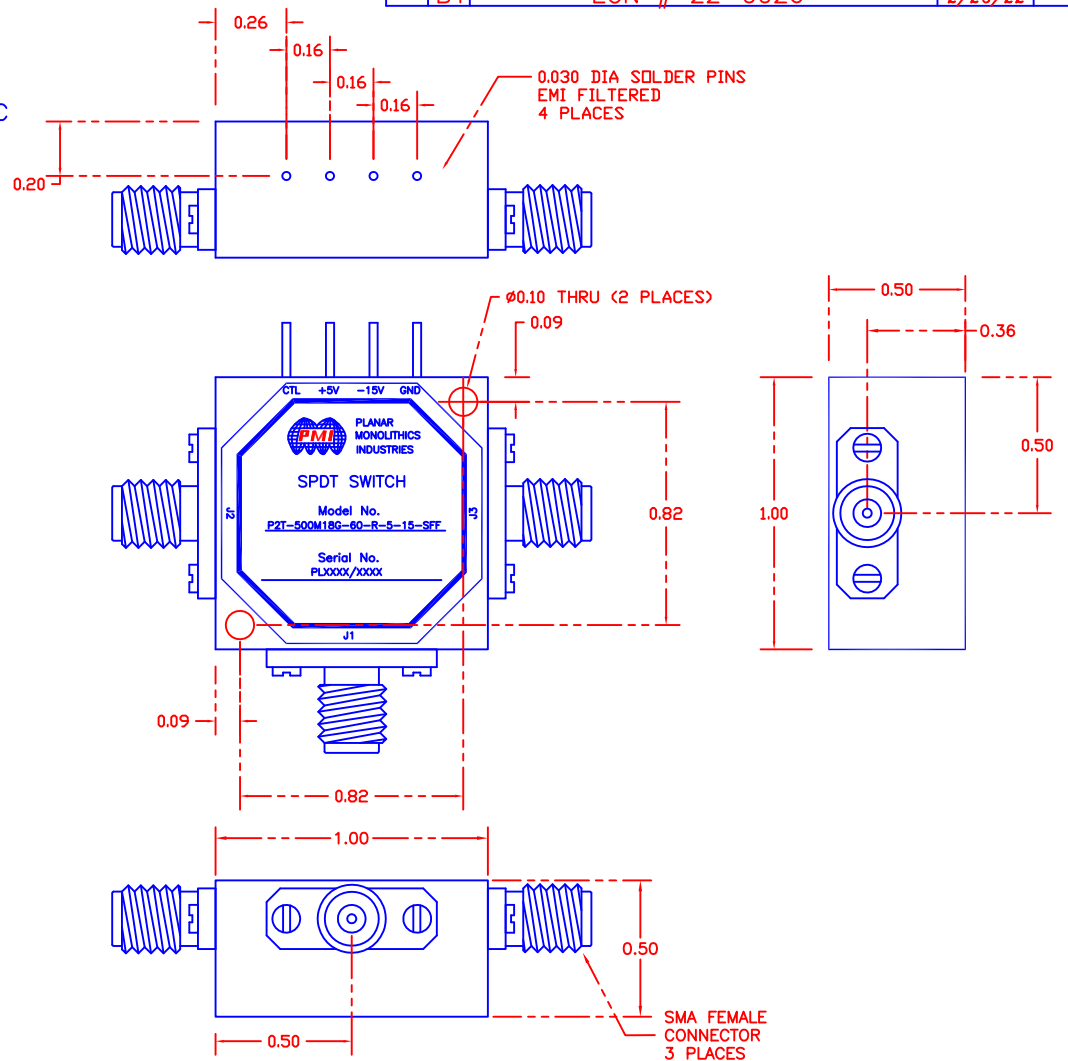
**DESCRIPTION:**

PLANAR MONOLITHICS INDUSTRIES MODEL NUMBER P2T-500M18G-60-R-5-15-SFF IS A REFLECTIVE SINGLE POLE, TWO THROW REFLECTIVE SWITCH THAT OPERATES FROM 500MHZ TO 18.0 GHz WHICH HANDLES 1WATT CW POWER. THE PORT TO PORT ISOLATION IS 60DB MINIMUM. THIS MODEL HAS LOW INSERTION LOSS WHILE STILL OFFERING A FAST SWITCHING SPEED OF 100NSEC MAXIMUM.

REVISIONS				
ZONE	REV.	DESCRIPTION	DATE	APPROVED
	A1	INITIAL RELEASE	11/20/18	
	B1	ECN # 22-0026	2/28/22	

**SPECIFICATIONS:**

- FREQUENCY:..... 500MHZ TO 18.0 GHz
- INSERTION LOSS:..... 2.2dB Maximum
- OPERATING INPUT POWER:.... 1 Watt CW Maximum
- VSWR:..... 1.9:1 Maxumim
- ISOLATION:.....60dB Minimum
- SWITCHING SPEED:.....100nsec Maximum
- CONTROL:.....TTL Logic "0" = J1 to J2  
TTL Logic "1" = J1 to J3
- DC VOLTAGE..... 80mA @ +5VDC Typical  
80mA @ -15VDC Typical
- CONNECTORS..... SMA FEMALE
- POWER AND CONTROL ..... EMI FILTERED SOLDER PINS
- SIZE:..... 1.00 X 1.00 X .500 (H)
- WEIGHT:..... 1.5 OZ. TYPICAL
- FINISH:..... PAINTED BLUE



**ENVIRONMENTAL RATINGS**

- TEMPERATURE:..... -45°C TO +85°C (OPERATING)  
-65°C TO +125°C (STORAGE)
- HUMIDITY:..... MIL-STD-202F, METHOD 103B COND. B
- SHOCK:..... MIL-STD-202F, METHOD 213B COND. B
- VIBRATION:..... MIL-STD-202F, METHOD 204B COND. B
- ALTITUDE:..... MIL-STD-202F, METHOD 105C COND. B
- TEMPERATURE CYCLE:..... MIL-STD-202F, METHOD 107D COND. A

**CONFIDENTIAL AND PROPRIETARY**

NOTE: THE ABOVE SPECIFICATIONS ARE SUBJECT TO CHANGE OR REVISION

ALL DIMENSIONS ARE IN INCHES  
TOLERANCES:  
X.XX ±0.020  
X.XXX ±0.010

PART NO.		PLANAR MONOLITHICS INDUSTRIES FREDERICK, MARYLAND		
APPROVALS	DATE	TITLE		
GJR	11/20/18	PRODUCT FEATURE		
DRAWN		P2T-500M18G-60-R-5-15-SFF		
CHECKED		SP2T SWITCH		
ISSUED		SIZE	FSCM NO.	DWG NO.
		A	05XQ0	27035841
		SCALE	N:S	SHEET 1 of 1
				REV. B1