

### Description:

Low Noise Amplifier designed for Military and Industrial applications. This amplifier is supplied in our standard PE2 housing that can be used as a SMA connectorized or a surface mount component. Other packages and connector types are available.

This model provides the following performance. Data is available upon request.

### Specifications:

Frequency Range: 8.0 to 12.0 GHz  
Gain: 45dB Typ.  
Gain Flatness: +/-1.0dB Max.  
Noise Figure: 3.0dB Typ.  
OP1dB: 19dBm Min.  
VSWR Input/Output: 2.0:1 Max.  
DC Voltage Supply: +12 to +15VDC  
DC Current Draw: 385mA Max.

### Features:

Internal Voltage Regulation  
Unconditional Stability  
Standard Operating Temperature -20 to +70 Deg. C

### Available Options:

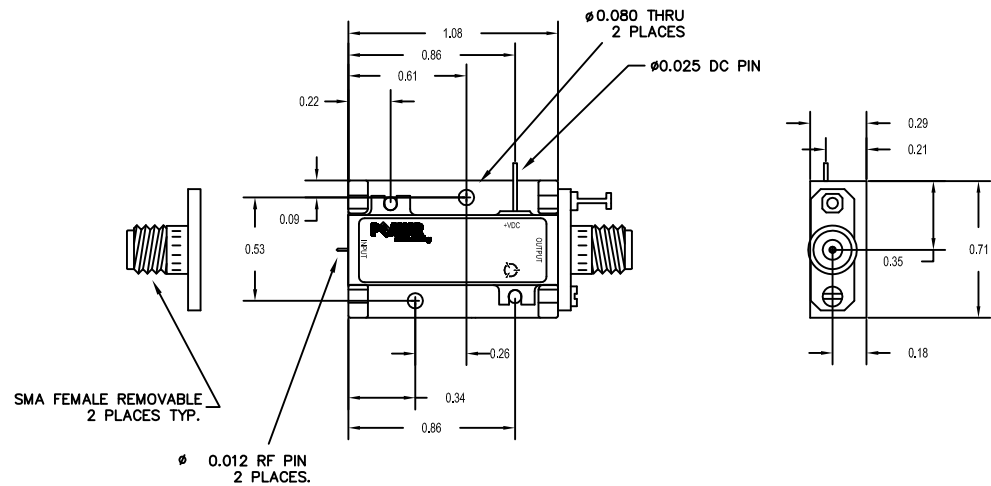
Various Package types  
Various Connector types  
Temperature Compensation  
Hermetic Sealing  
Gain and Phase Matching  
MIL-STD-883 Screening Available

### Environmental Ratings:

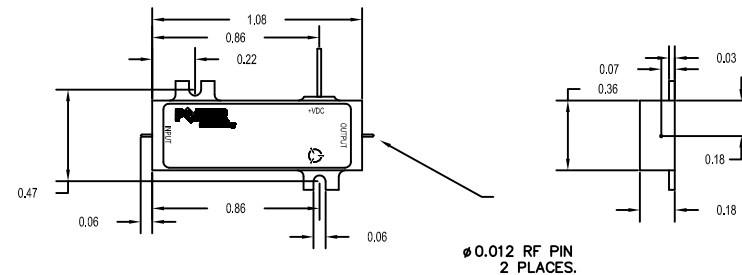
Temperature: -20 to +70 Deg. C (Operating) ; -55 to +85 Deg C Available)  
-55 to +125 Deg. C (Storage)  
Humidity: MIL-STD-202F, METHOD 103B COND B.  
Shock: MIL-STD-202F, METHOD 213B COND B.  
Altitude: MIL-STD-202F, METHOD 105C COND B.  
Temperature Cycle: MIL-STD-202F, METHOD 107D COND A

Note: The above specifications are subject to change or revision.

### PE2 HOUSING WITH CARRIER



### PE2 HOUSING WITHOUT CARRIER (SURFACE MOUNT)



UNLESS OTHERWISE SPECIFIED  
DIMENSIONS ARE IN INCHES  
TOLERANCES ARE:  
FRACTIONS DECIMALS ANGLES  
± .XX ± 0.010 ±  
± .XXX ± 0.005

PART NO.		REVISIONS		DATE		APPROVED	
ZONE	REV.	DESCRIPTION	DATE	APPROVED	DATE	APPROVED	APPROVED
-	-	ORIGINAL RELEASE	2/1/08				

MATERIAL:		6061-T6 Aluminum		DRAWN		K Mason		2/21/08		CHECKED				TITLED							
FINISH:		Gold Plate over Nickel		SCALE		N/A		SIZE		B		1LK53		WEB		MODEL		A		1 OF 1	

PART NO.		5715 Industry Lane, Unit 11		FREDERICK, MARYLAND		PRODUCT FEATURE		PE2-45-8R012R0-3R0-21-12-SFF		WEB		MODEL		A		1 OF 1	
----------	--	-----------------------------	--	---------------------	--	-----------------	--	------------------------------	--	-----	--	-------	--	---	--	--------	--