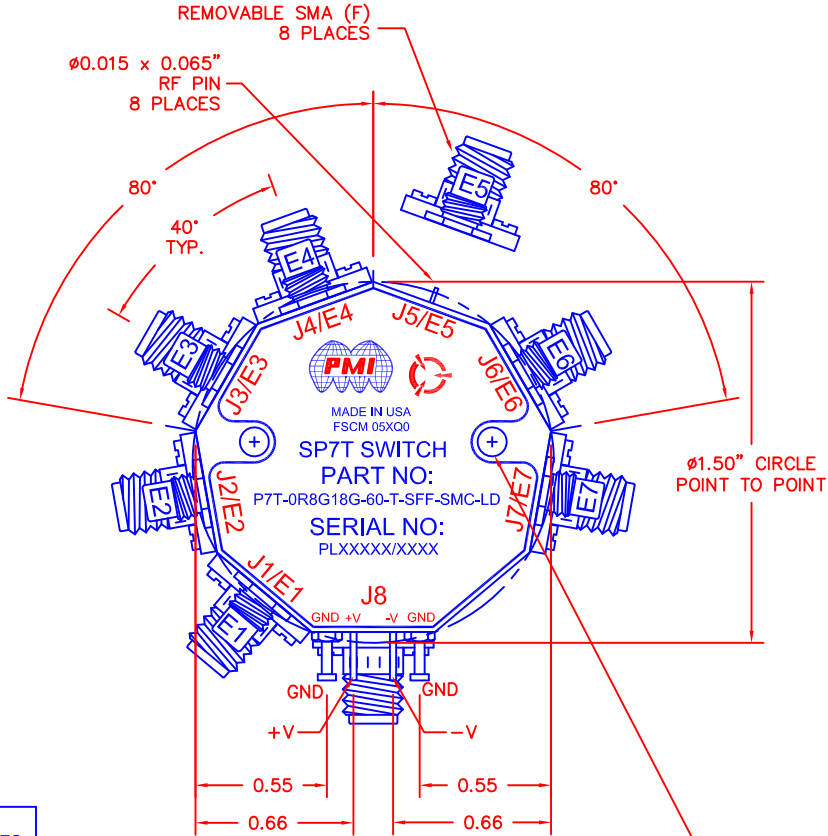
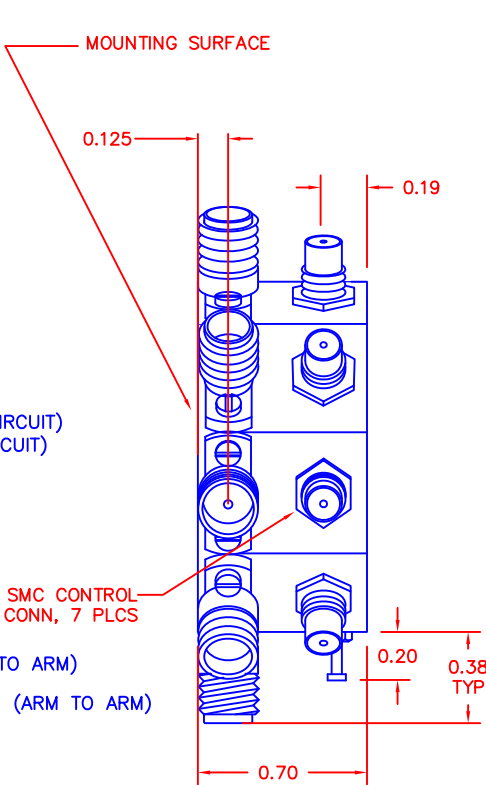


DESCRIPTION:

PMI MODEL P7T-0R8G18G-60-T-SFF-SMC-LD IS A SINGLE POLE SEVEN THROW ABSORPTIVE SWITCH WITH SMA CONNECTORS AND SMC CONTROL CONNECTORS. IT HAS A FREQUENCY RANGE OF 0.8 TO 18GHz, 4.3 dB MAXIMUM INSERTION LOSS, AND 60dB ISOLATION MINIMUM @ 18GHz.

SPECIFICATIONS:

- FREQUENCY: 0.8 GHz TO 18 GHz
- INSERTION LOSS: 4.3dB MAX.
- ISOLATION: 0.8 GHz TO 18 GHz: 60dB MIN.
- VSWR: IN/OUT: 2.0:1
OUT/OFF: 2.0:1
- SPEED: RISE: 15ns MAX.
FALL: 15ns MAX.
DELAY ON: 75ns MAX.
DELAY OFF: 75ns MAX.
- INPUT POWER: (CW)+20dBm (STANDARD)
- SURVIVAL POWER: 1 WATT CW, 10 WATTS PEAK 1 us
- CONTROL: TTL LOGIC
"0" = ON = 0 TO +0.8VDC (CLOSED CIRCUIT)
"1" = OFF = +2 TO +5VDC (OPEN CIRCUIT)
- POWER SUPPLY: +5V @ 350 mA MAX.
-5V @ 100 mA MAX.
- FINISH: PAINTED BLUE
- AMPLITUDE BALANCE: +/- 1.0dB MAX AT ROOM TEMP (ARM TO ARM)
- PHASE BALANCE: +/- 20.0 Degrees MAX AT ROOM TEMP (ARM TO ARM)



0.089 THRU W/4-40 THD
0.250 DEEP ON MOUNTING SURFACE
LOCATED ON 1.00" CIRCLE
2 PLACES

SPECIFICATIONS REQUIRED	INSERTION LOSS 4.3 dB	VSWR (2:1/9.54dB)	ISOLATION 60dB	SWITCHING SPEED 75 ns	POWER ≤20dBm (STANDARD) ≤30dBm (SURVIVAL)	AVG. UNIT ERROR INCLUDING TEMP. WAVES ≤0.2 dB
PERFORMANCE VARIATION/ INCONSISTENCY*	±1dB	±1dB	±5dB	±5ns	COMPLIANT	≤0.75dB

* CONSISTENCY/STABILITY FOR EACH DEVICE

ENVIRONMENTAL RATINGS:

- TEMPERATURE: -40°C TO +85°C (OPERATING)
-65°C TO +125°C (STORAGE)
- HUMIDITY: MIL-STD-202F, METHOD 103B COND. B
- SHOCK: MIL-STD-202F, METHOD 213B COND. B
- VIBRATION: MIL-STD-202F, METHOD 204D COND. B
- ALTITUDE: MIL-STD-202F, METHOD 105C COND. B
- TEMPERATURE CYCLE: MIL-STD-202F, METHOD 107D COND. A

ALL DIMENSIONS ARE IN INCHES
TOLERANCES:
X.XX ±0.020
X.XXX ±0.010

NOTE: SPECIFICATIONS WILL VARY OVER OPERATING TEMPERATURE
NOTE: THE ABOVE SPECIFICATIONS ARE SUBJECT TO CHANGE OR REVISION

* Units are designed to meet environmental ratings, but not tested.
If environmental testing is required, please contact sales department.

REVISIONS			
ZONE	REV.	DESCRIPTION	DATE
	A1	ORIGINAL RELEASE	5/4/20

PART NO.		PLANAR MONOLITHICS INDUSTRIES, INC.			
		7311-F GROVE ROAD FREDERICK, MARYLAND 21704 USA TEL: 301-662-5019 FAX: 301-662-1731 WEBSITE: www.pmi-ri.com E-MAIL: sales@pmi-ri.com ISO 9001:2008 CERTIFIED			
APPROVALS		DATE		TITLE	
DRAWN		SMH		PRODUCT FEATURE	
CHECKED				P7T-0R8G18G-60-T-SFF-SMC-LD	
ISSUED					
SIZE		FSCM NO.		DWG NO.	
A		05XQ0		27038801	
SCALE		N/S		SHEET 1 OF 1	
				REV. A1	