

DESCRIPTION

PMI MODEL NUMBER PS-85M4G-9B-SFF OPT100M600M IS A 100 MHz TO 600 MHz DIGITALLY CONTROLLED ANALOG PHASE SHIFTER WITH CAPABILITY FOR PHASE SHIFTING FROM 0° TO 360°. THE UNIT CONSISTS OF AN ANALOG PHASE SHIFTER AND A DIGITAL-TO-ANALOG CONVERTER. NINE LOGIC INPUT LINES ALLOW 512 DISCRETE VALUES OF PHASE.

SPECIFICATIONS

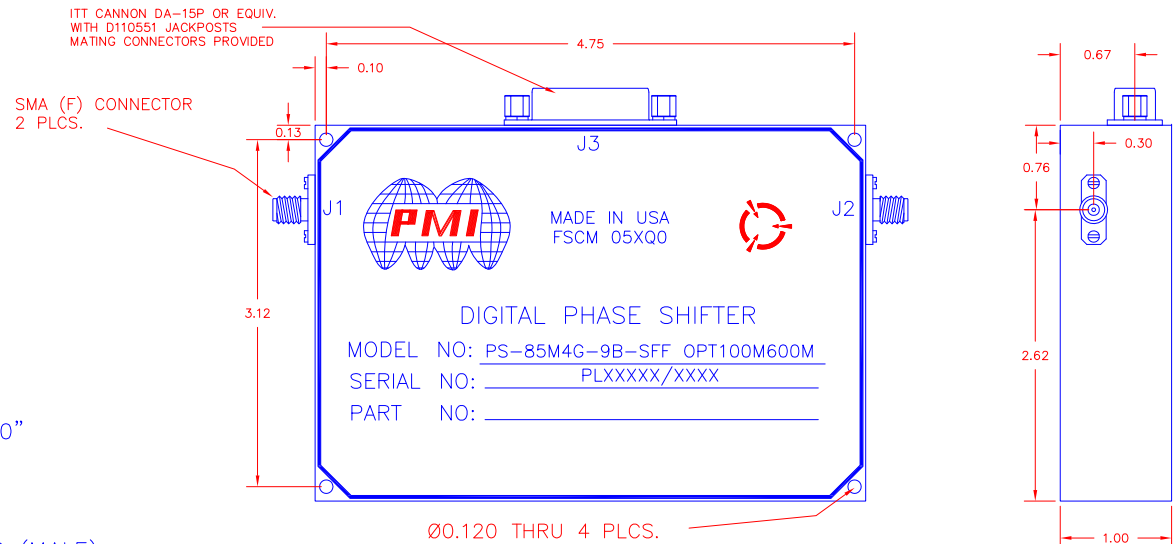
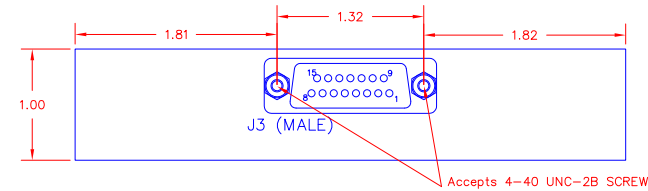
- FREQUENCY RANGE: 0.1 TO 0.6 GHz
- CONTROL 9 BIT TTL
- INSERTION LOSS 13dB MAX
- PHASE SHIFT 360° TYP
- AMPLITUDE ERROR ±1.0 dB MAX.
- PHASE SHIFT ERROR ±10° MAX.
- SWITCHING SPEED 500 nsec MAX.
- POWER SUPPLY
 - +V: +15V
 - V: -15V
- SIZE: 4.95" X 3.38" X 1.00"
- WEIGHT: TBD
- CONNECTORS(RF) SMA FEMALE
- CONNECTOR (CONTROL) 15 PIN SUBMINIATURE D (MALE)
- FINISH BLUE EPOXY POLIMIDE COATING IAW MIL-C-22750, TYPE I OVER EPOXY POLIMIDE PRIMER IAW MIL-P-23377, TYPE I, CLASS 1 OR 3.

ENVIRONMENTAL RATINGS

- TEMPERATURE: -55°C TO +85°C (OPERATING)
..... -65°C TO +125°C (STORAGE)
- HUMIDITY: MIL-STD-202F, METHOD 103B COND. B
- SHOCK: MIL-STD-202F, METHOD 213B COND. B
- VIBRATION: MIL-STD-202F, METHOD 204D COND. B
- ALTITUDE: MIL-STD-202F, METHOD 105C COND. B
- TEMPERATURE CYCLE: MIL-STD-202F, METHOD 107D COND. A

NOTE: SPECIFICATIONS WILL VARY OVER OPERATING TEMPERATURE
NOTE: THE ABOVE SPECIFICATIONS ARE SUBJECT TO CHANGE OR REVISION

REVISIONS				
ZONE	REV.	DESCRIPTION	DATE	APPROVED
	-	PRELIMINARY	1/5/15	



ELECTRICAL CONNECTOR PIN ASSIGNMENTS

PIN LETTER	FUNCTION
1	LOGIC INPUTS (LSB)
2	LOGIC INPUTS
3	LOGIC INPUTS
4	LOGIC INPUTS
5	LOGIC INPUTS
6	LOGIC INPUTS
7	LOGIC INPUTS
8	LOGIC INPUTS
9	LOGIC INPUTS (MSB)
10	NC
11	NC
12	NC
13	+ 15 VDC
14	- 15 VDC
15	GROUND

ALL DIMENSIONS ARE IN INCHES
TOLERANCES:
X.XX ±0.020
X.XXX ±0.010

PMI CONFIDENTIAL AND PROPRIETARY

PLANAR MONOLITHICS INDUSTRIES, INC.

7311-F GROVE ROAD
FREDERICK, MARYLAND 21704 USA
TEL: 301-662-5019 FAX: 301-662-1731
WEBSITE: www.pmi-rf.com
E-MAIL: sales@pmi-rf.com
ISO 9001 CERTIFIED



APPROVALS		DATE	TITLE			
DRAWN <i>BFB</i>		2/3/11	PRODUCT FEATURE			
MODIFIED <i>JS</i>		1/5/15	PS-85M4G-9B-SFF OPT100M600M			
ISSUED			0.1-0.6 GHz, 360° PHASE SHIFTER			
SIZE	FSCM NO.	DWG NO.	REV.			
A	05XQ0	PRELIMINARY	-			
SCALE N:S			SHEET 1 OF 1			