

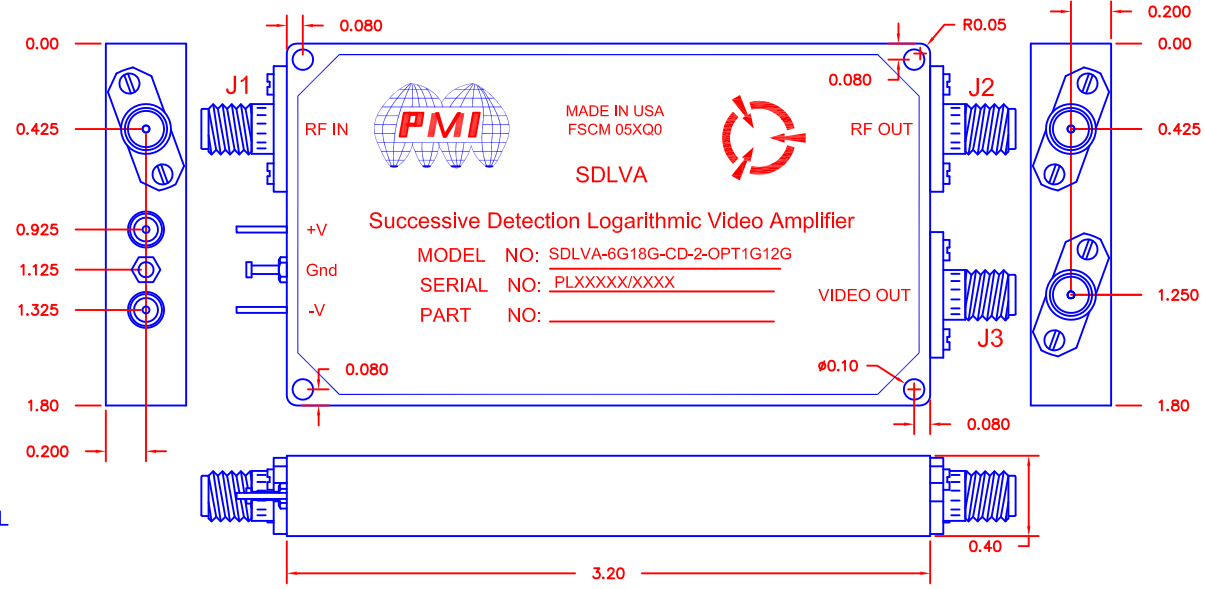
DESCRIPTION:

PMI MODEL NUMBER SDLVA-6G18G-CD-2-OPT1G12G IS A SUCCESSIVE DETECTION LOGARITHMIC VIDEO AMPLIFIER (SDLVA) DESIGNED TO OPERATE OVER THE 1.0 TO 12.0 GHz FREQUENCY RANGE. THIS MODEL IS DESIGNED FOR ULTRA HIGH SPEED APPLICATIONS WHILE MAINTAINING FLATNESS AND ACCURACY.

| REVISIONS | | | | |
|-----------|------|-------------|---------|----------|
| ZONE | REV. | DESCRIPTION | DATE | APPROVED |
| | - | PRELIMINARY | 10/2/18 | |
| | | | | |
| | | | | |

SPECIFICATIONS:

- FREQUENCY: _____ 1.0 TO 12.0 GHz
- FLATNESS: _____ ± 2.0dB MAXIMUM
- TSS: _____ -70 dB MINIMUM
- VSWR: _____ 2.0:1 (RF INPUT)
- POWER INPUT: _____ +17 dBm CW MAXIMUM
- RF OUT: _____ +13 dBm ±3 dB TYPICAL
- LOG SLOPE: _____ 25 mV/dB (±10%) 50 Ω
- LOG RANGE: _____ -70 to +5 dBm
- LOG LINEARITY: _____ ±2.5 dB (-40°C - +85°C)
- PULSE RANGE: _____ 30 ns to CW
- RISE TIME: _____ 10 ns MAXIMUM, 6ns TYPICAL
- RECOVERY TIME: _____ 60 ns TYPICAL
- POWER SUPPLY: _____ +15V or +12V @ 350 mA NOMINAL
 _____ -15V or -12V @ 180 mA NOMINAL
- CONNECTORS: _____ SMA FEMALE CONNECTORS
- FINISH: _____ GOLD PLATED



PMI CONFIDENTIAL AND PROPRIETARY

ENVIRONMENTAL RATINGS:

- TEMPERATURE: _____ -40°C TO +85°C (OPERATING)
 _____ -65°C TO +125°C (STORAGE)
- HUMIDITY: _____ MIL-STD-202F, METHOD 103B COND. B
- SHOCK: _____ MIL-STD-202F, METHOD 213B COND. B
- VIBRATION: _____ MIL-STD-202F, METHOD 204D COND. B
- ALTITUDE: _____ MIL-STD-202F, METHOD 105C COND. B
- SALT FOG: _____ MIL-STD-202F, METHOD 107D COND. A
- FUNGUS: _____ MIL-STD-810C, METHOD 508.2
- TEMPERATURE CYCLE: _____ MIL-STD-202F, METHOD 107

PLANAR MONOLITHICS INDUSTRIES, INC.
 7311-F GROVE ROAD
 FREDERICK, MARYLAND 21704 USA
 TEL: 301-662-5019 FAX: 301-662-1731
 WEBSITE: www.pmi-rf.com
 E-MAIL: sales@pmi-rf.com
 ISO 9001 CERTIFIED



ALL DIMENSIONS ARE IN INCHES
 TOLERANCES:
 .X.XX ±0.020
 .X.XXX ±0.010

NOTE: THE ABOVE SPECIFICATIONS ARE SUBJECT TO CHANGE OR REVISION

| | | | | | |
|-------------------|------|----------|---------------------------|------|--|
| APPROVALS | | DATE | TITLE | | |
| DRAWN <i>VR</i> | | 11/20/14 | PRODUCT FEATURE | | |
| REDRAWN <i>GW</i> | | 10/2/18 | SDLVA-6G18G-CD-2-OPT1G12G | | |
| ISSUED | SIZE | FSCM NO. | DWG NO. | REV. | |
| | A | 05XQ0 | PRELIMINARY | - | |
| SCALE N:S | | | SHEET 1 OF 1 | | |