

DESCRIPTION:

PMI MODEL NUMBER P3T-2G18G-60-T-SFF-IND IS A SINGLE POLE, THREE THROW NON-REFLECTIVE SWITCH DESIGNED TO OPERATE OVER THE 2.0GHZ TO 18.0GHZ FREQUENCY RANGE. THIS MODEL IS DESIGNED TO MAINTAIN LOW INSERTION LOSS, HIGH ISOLATION, AND FAST SWITCHING SPEED.

SPECIFICATIONS:

- FREQUENCY: 2.0 GHz TO 18.0 GHz
- INSERTION LOSS: 3.2dB MAXIMUM
- ISOLATION: 60dB MINIMUM
- VSWR: 2.0:1 MAXIMUM
- SPEED: DELAY ON/OFF - 50ns TYPICAL, 100ns MAXIMUM
RISE / FALL - 10ns TYPICAL
- POWER INPUT (OPERATING): +23dBm CW MAXIMUM
- CONTROL: TTL LOGIC - "0" = "LOW LOSS"
TTL LOGIC - "1" = "ISOLATION"
PINS E1, E2, and E3 ARE PULLED LOW "0"
- POWER SUPPLY: +5V @ 50 mA NOMINAL
-12V @ 50 mA NOMINAL
- RF CONNECTORS: SMA FEMALE CONNECTORS
- DC CONNECTORS: SOLDER PINS
- FINISH: PAINTED BLUE

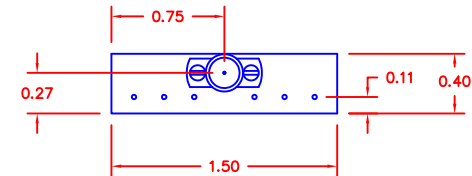
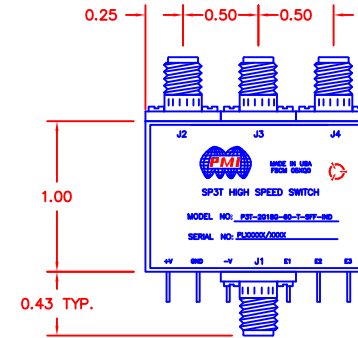
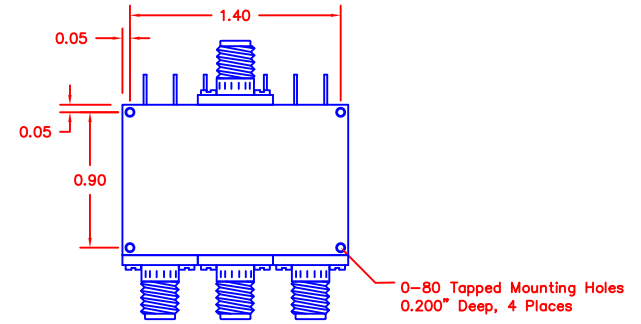
ENVIRONMENTAL RATINGS:

- TEMPERATURE: -54°C TO +85°C (OPERATING)
-54°C TO +125°C (STORAGE)
- HUMIDITY: MIL-STD-202F, METHOD 103B COND. B
- SHOCK: MIL-STD-202F, METHOD 213B COND. C
- VIBRATION: MIL-STD-202F, METHOD 204D COND. G

NOTE: THE ABOVE SPECIFICATIONS ARE SUBJECT TO CHANGE OR REVISION

ALL DIMENSIONS ARE IN INCHES
TOLERANCES:
X.XX ±0.02
X.XXX ±0.010

REVISIONS				
ZONE	REV.	DESCRIPTION	DATE	APPROVED
	-	PRELIMINARY	9/13/14	



PMI CONFIDENTIAL AND PROPRIETARY

PLANAR MONOLITHICS INDUSTRIES, INC.
7311-F GROVE ROAD
FREDERICK, MARYLAND 21704 USA
TEL: 301-662-5019 FAX: 301-662-1731
WEBSITE: www.pmi-rf.com
E-MAIL: sales@pmi-rf.com
ISO 9001 CERTIFIED



APPROVALS		DATE	TITLE			
DRAWN <i>K.M.</i>		9/13/14	PRODUCT FEATURE			
CHECKED			P3T-2G18G-60-T-SFF-IND			
ISSUED			SIZE	FSCM NO.	DWG NO.	REV.
			A	05XQ0	PRELIMINARY	-
			SCALE	N:S	SHEET	1 OF 1