

DESCRIPTION

PMI MODEL P32T-0R5G18G-60-T-SFF IS AN ABSORPTIVE, SINGLE POLE THIRTY TWO WAY, HIGH SPEED SOLID STATE SWITCH. THIS MODEL OFFERS LOSS LOSS AND HIGH ISOLATION, AND IS SUPPLIED IN A COMPACT HOUSING MEASURING ONLY 8.0" X 3.5" X 1.0"

SPECIFICATIONS

- FREQUENCY RANGE: _____ 0.5 TO 18.0 GHz
- INSERTION LOSS: _____ 9.5dB MAX
- ISOLATION: _____ 0.5 GHz TO 2.0 GHz : 60dB MIN
2.0 GHz TO 18.0 GHz : 70dB MIN
- VSWR (IN/OUT): _____ 2.0:1 MAX
- SWITCHING SPEED: _____ 100ns MAX
- INPUT POWER: _____ 20dBm CW MAX (OPERATING)
- SURVIVAL POWER: _____ 1 WATT CW, 10 WATTS PEAK, 1 us
- CONTROL: _____ DECODED (SEE LOGIC TABLE)
- CONNECTORS:
 - PORTS: _____ SMA (F) REMOVABLE
 - CONTROL & POWER: _____ 9 PIN SUB D MALE
(MATING CONNECTOR SUPPLIED WITH UNIT)
- DC SUPPLY: _____ +5VDC @ 1600mA
_____ -5VDC @ 200mA
- SIZE _____ (L) 8.0" X (W) 3.5" X (H) 1.0"
- FINISH _____ GRAY EPOXY POLIMIDE COATING IAW MIL-C-22750, TYPE I OVER EPOXY POLIMIDE PRIMER IAW MIL-P-23377, TYPE I, CLASS 1 OR 3.

ENVIRONMENTAL RATINGS

- TEMPERATURE: _____ -55°C TO + 85°C (OPERATING)
_____ -65°C TO +125°C (STORAGE)
- HUMIDITY: _____ MIL-STD-202F, METHOD 103B COND. B
- SHOCK: _____ MIL-STD-202F, METHOD 213B COND. B
- VIBRATION: _____ MIL-STD-202F, METHOD 204D COND. B
- ALTITUDE: _____ MIL-STD-202F, METHOD 105C COND. B
- TEMPERATURE CYCLE: _____ MIL-STD-202F, METHOD 107D COND. A

NOTE: SPECIFICATIONS WILL VARY OVER OPERATING TEMPERATURE
NOTE: THE ABOVE SPECIFICATIONS ARE SUBJECT TO CHANGE OR REVISION

REVISIONS				
ZONE	REV.	DESCRIPTION	DATE	APPROVED
	1	ORIGINAL RELEASE	02/19/14	
	A1	ECN # 14-0204	01/30/16	

SPECIFICATIONS & PRODUCT INFO

LOGIC TABLE					
PORT	E1	E2	E3	E4	E5
J1	0	0	0	0	0
J2	1	0	0	0	0
J3	0	1	0	0	0
J4	1	1	0	0	0
J5	0	0	1	0	0
J6	1	0	1	0	0
J7	0	1	1	0	0
J8	1	1	1	0	0
J9	0	0	0	1	0
J10	1	0	0	1	0
J11	0	1	0	1	0
J12	1	1	0	1	0
J13	0	0	1	1	0
J14	1	0	1	1	0
J15	0	1	1	1	0
J16	1	1	1	1	0
J17	0	0	0	0	1
J18	1	0	0	0	1
J19	0	1	0	0	1
J20	1	1	0	0	1
J21	0	0	1	0	1
J22	1	0	1	0	1
J23	0	1	1	0	1
J24	1	1	1	0	1
J25	0	0	0	1	1
J26	1	0	0	1	1
J27	0	1	0	1	1
J28	1	1	0	1	1
J29	0	0	1	1	1
J30	1	0	1	1	1
J31	0	1	1	1	1
J32	1	1	1	1	1

PINOUT TABLE	
PIN NO:	FUNCTION
1	E1
2	E2
3	E3
4	E4
5	E5
6	N/C
7	+V
8	-V
9	GND

PMI CONFIDENTIAL AND PROPRIETARY

PLANAR MONOLITHICS INDUSTRIES, INC.

7311-F GROVE ROAD
FREDERICK, MARYLAND 21704 USA
TEL: 301-662-5019 FAX: 301-662-1731
WEBSITE: www.pmi-ri.com
E-MAIL: sales@pmi-ri.com
ISO 9001 CERTIFIED



ALL DIMENSIONS ARE IN INCHES
TOLERANCES:
X.XX ±0.020
X.XXX ±0.010

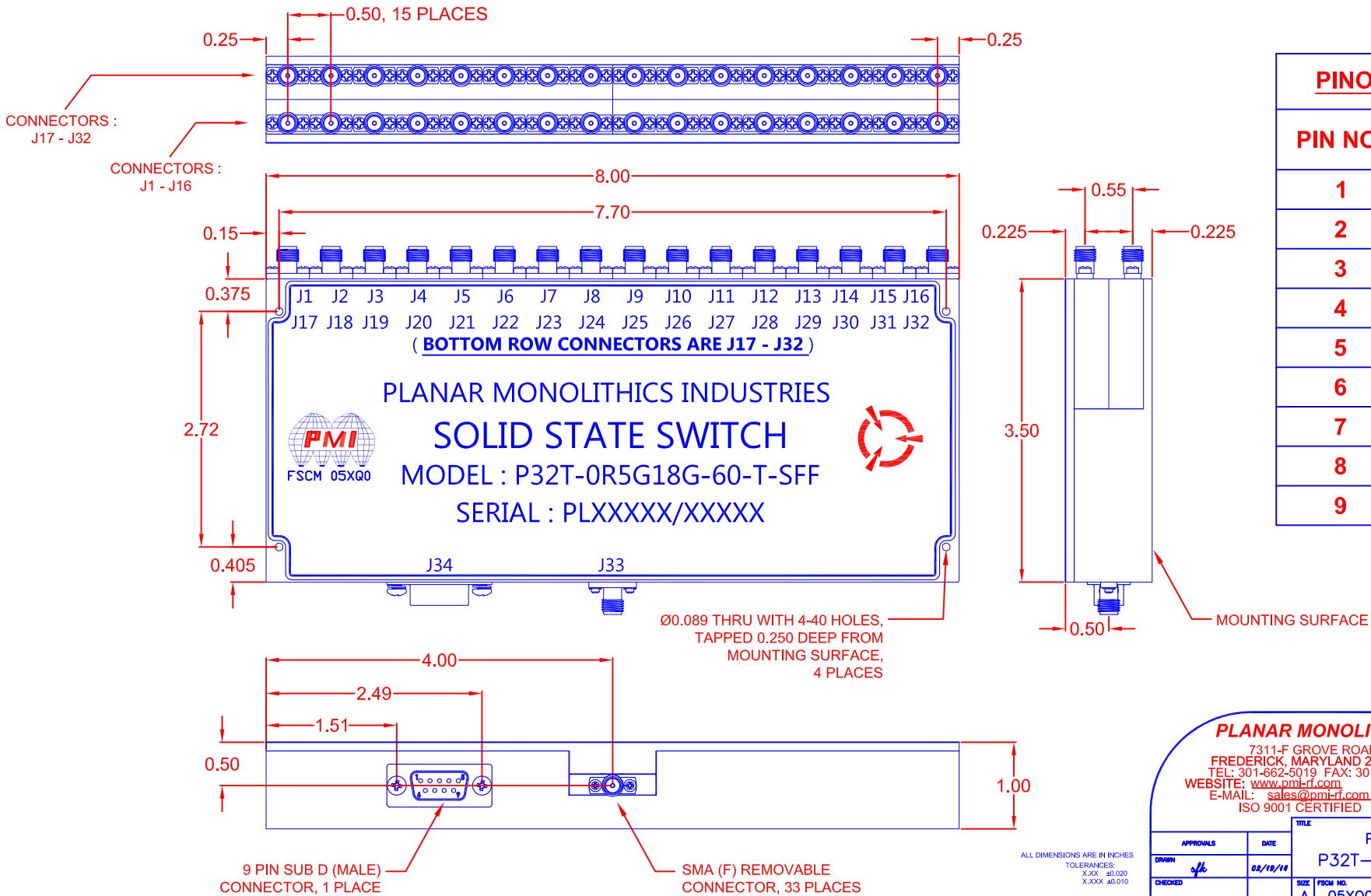
APPROVALS		DATE	TITLE			REV.
DRWN	<i>sp</i>	02/19/14	PRODUCT FEATURE P32T-0R5G18G-60-T-SFF			
CHECKED			SIZE	FORM NO.	DWG NO.	REV.
ISSUED			A	05XQ0	27022030	A1
			SCALE	N:S		SHEET
						1 OF 2

DESCRIPTION

PMI MODEL P32T-0R5G18G-60-T-SFF IS AN ABSORPTIVE, SINGLE POLE THIRTY TWO WAY, HIGH SPEED SOLID STATE SWITCH. THIS MODEL OFFERS LOSS LOSS AND HIGH ISOLATION, AND IS SUPPLIED IN A COMPACT HOUSING MEASURING ONLY 8.0" X 3.5" X 1.0"

MECHANICAL

REVISIONS				
ZONE	REV.	DESCRIPTION	DATE	APPROVED
	1	ORIGINAL RELEASE	02/19/14	
A1		ECN # 14-0204	01/30/16	



PINOUT TABLE

PIN NO:	FUNCTION
1	E1
2	E2
3	E3
4	E4
5	E5
6	N/C
7	+V
8	-V
9	GND

PMI CONFIDENTIAL AND PROPRIETARY

PLANAR MONOLITHICS INDUSTRIES, INC.

7311-F GROVE ROAD
FREDERICK, MARYLAND 21704 USA
TEL: 301-662-5019 FAX: 301-662-1731
WEBSITE: www.pmi-ri.com
E-MAIL: sales@pmi-ri.com
ISO 9001 CERTIFIED



APPROVALS		DATE	TITLE	
DRWN	<i>slf</i>	02/19/14	PRODUCT FEATURE P32T-0R5G18G-60-T-SFF	
CHECKED			SIZE A	FORM NO. 05XQ0
ISSUED			DWG NO. 27022030	REV. A1
SCALE N:S			SHEET 2 OF 2	