

DESCRIPTION:

AMC MODEL SFB-13-6P-MCT IS A SIX CHANNEL SWITCHED BANK WITH INTEGRAL TTL DRIVER.

SPECIFICATIONS:

- FREQUENCY RANGE: 1.38 GHz – 2.62 GHz
- INSERTION LOSS: -3.3dB + & - 0.5dB
- PASS BAND SPECIFICATION: Passband ripple 0.25dB
- BAND PASS FILTER TYPE: Comblaine Cheby Chev
- CHANNEL SPECIFICATIONS: 0.5 dB FREQ. BW

0.5dB Passband		
	F LOW MHz	F HIGH MHz
CHANNEL 1	1380	1620
CHANNEL 2	1580	1820
CHANNEL 3	1780	2020
CHANNEL 4	1980	2220
CHANNEL 5	2180	2420
CHANNEL 6	2380	2620

REJECTION				
LOW SIDE -60dB	Low Side -70dB	High Side -60dB	High Side -70dB	
1200 MHz	DC to 1000 MHz	1800 MHz	2.1 to 6GHz	
1400 MHz	DC to 1100 MHz	2000 MHz	2.3 to 6GHz	
1600 MHz	DC to 1300 MHz	2200 MHz	2.5 to 6GHz	
1800 MHz	DC to 1500 MHz	2400 MHz	2.7 to 6GHz	
2000 MHz	DC to 1700 MHz	2600 MHz	2.9 to 6GHz	
2200 MHz	DC to 1900 MHz	2800 MHz	3.1 to 6GHz	

- ISOLATION: 60 dB CHANNEL TO CHANNEL
- VSWR: 1.5:1 GOAL 2.0:1 TYPICAL
- SWITCHING SPEED: 500 ns MAX.
- CONTROL: TTL 6 BIT CONTROL
- RF POWER RATING: 27 dBm CW MAX.
- IP3: 46 dBm
- POWER SUPPLY: +15v @ 500ma max.
-15V @ 100mA max.
- CONNECTOR: SMA FEMALE
- SIZE: 5.0"(L) x 4.0"(W) x 1.5"(H)
- WEIGHT: 13 OUNCES MAXIMUM
- ENVIRONMENTAL: TEMPERATURE 0 TO +85C

	LOGIC TABLE					
	INPUT					
	E1	E2	E3	E4	E5	E6
CHANNEL 1	L	H	H	H	H	H
CHANNEL 2	H	L	H	H	H	H
CHANNEL 3	H	H	L	H	H	H
CHANNEL 4	H	H	H	L	H	H
CHANNEL 5	H	H	H	H	L	H
CHANNEL 6	H	H	H	H	H	L

PIN OUT TABLE J1	
PIN	TO
1	+15V
2	GND
3	-15V
4	E1
5	E2
6	E3
7	E4
8	E5
9	E6

N/C = NO CONNECTION

ENVIRONMENTAL RATINGS:

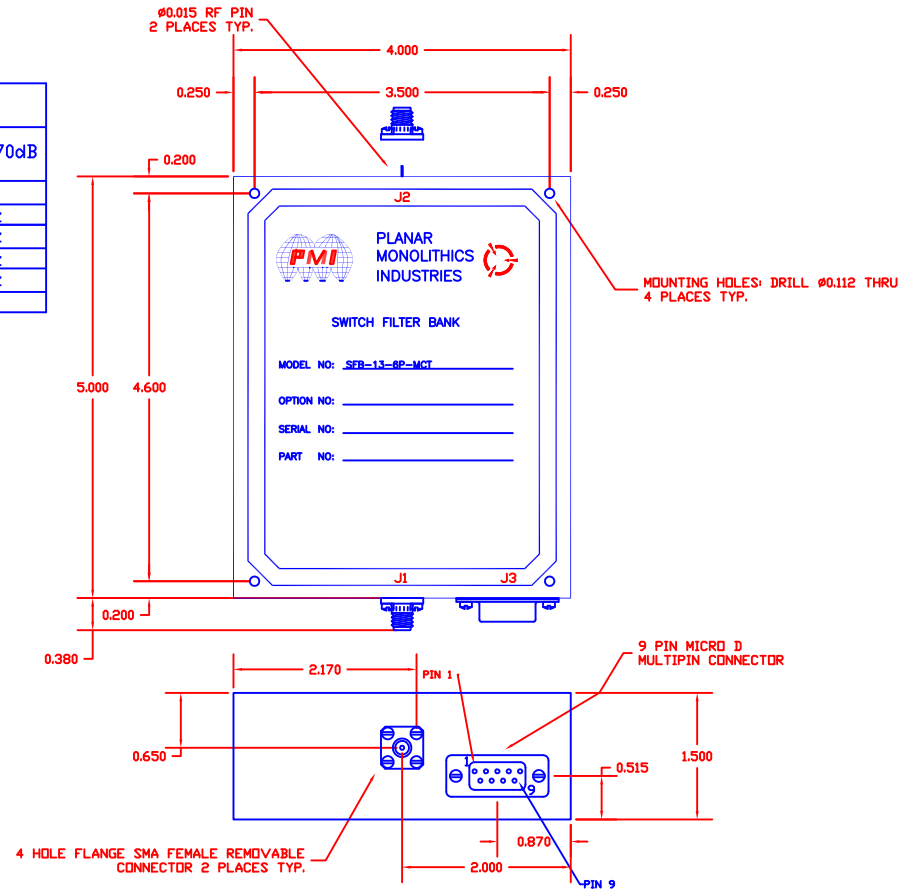
- TEMPERATURE: -55°C TO +85°C (OPERATING)
-65°C TO +125°C (STORAGE)
- HUMIDITY: MIL-STD-202F, METHOD 103B COND. B
- SHOCK: MIL-STD-202F, METHOD 213B COND. B
- VIBRATION: MIL-STD-202F, METHOD 204D COND. B
- ALTITUDE: MIL-STD-202F, METHOD 105C COND. B
- TEMPERATURE CYCLE: MIL-STD-202F, METHOD 107D COND. A


NOTE: THE ABOVE SPECIFICATIONS ARE SUBJECT TO CHANGE OR REVISION

ALL DIMENSIONS ARE IN INCHES
TOLERANCES:
X.XX ±0.010
X.XXX ±0.005

NOTE: THE ABOVE SPECIFICATIONS ARE SUBJECT TO CHANGE OR REVISION

REVISIONS				
ZONE	REV.	DESCRIPTION	DATE	APPROVED
	-	PRELIMINARY	1/29/20	



PART NO.		 PLANAR MONOLITHICS INDUSTRIES 7311-F GROVE RD FREDERICK, MARYLAND	
APPROVALS	DATE	OUTLINE DRAWING SFB-13-6P-MCT	
DRAWN K SIMMS	8/19/99		
REDRAWN CW	1/29/20		
ISSUED	SIZE FSCM NO.	DWG NO.	REV.
	A 05XQ0	PRELIMINARY	-
SCALE N/A		SHEET 1 OF 1	