

## DESCRIPTION

PMI MODEL: P2T-420M470M-50-R-SFF IS A HIGH SPEED REFLECTIVE SINGLE POLE TWO THROW SWITCH CAPABLE OF HOT SWITCHING WITHIN 1  $\mu$ s MAXIMUM. THIS SWITCH OPERATES OVER THE 420 MHZ TO 470 MHZ RANGE WITH A MINIMUM ISOLATION OF 70 dB.

## SPECIFICATIONS

- FREQUENCY RANGE: ----- 420 TO 470 MHZ
- INSERTION LOSS: ----- 1.6 dB MAXIMUM
- ISOLATION: ----- 70 dB MINIMUM
- VSWR: ----- 1.50:1 MAXIMUM
- SWITCHING SPEED: ----- 1  $\mu$ s MAXIMUM
- OPERATING POWER: ----- +50 dBm P1dB CW
- DC POWER SUPPLY: ----- +12 V TO 18 V @ 300 mA MAXIMUM - POWER ON (30  $\mu$ s)  
+15 V @ 300 mA MAXIMUM - STABLE OPERATING
- LOGIC CONTROL: ----- TTL - SEE TABLE
- CONNECTORS: ----- SMA FEMALE
- SIZE: ----- 1.80" x 1.40" x 0.60"  
45.72 mm x 40.64 mm x 15.24 mm
- FINISH: ----- BLUE EPOXY POLIMIDE COATING IAW MIL-C-22750, TYPE I  
OVER EPOXY POLIMIDE PRIMER IAW MIL-P-23377, TYPE I, CLASS 1 OR 3.

### LOGIC CONTROL TABLE

	COM - RX	COM - TX
TTL LO	I.L.	ISOL.
TTL HI	ISOL.	I.L.

## ENVIRONMENTAL RATINGS

- TEMPERATURE: ----- -40 °C TO +85 °C (OPERATING)  
-55 °C TO +125 °C (STORAGE)
- HUMIDITY: ----- UP TO 90%, NON-CONDENSING
- SHOCK: ----- MIL-STD-202, METHOD 213B COND. B
- VIBRATION: ----- MIL-STD-202, METHOD 204D COND. B
- ALTITUDE: ----- MIL-STD-202, METHOD 105C COND. B
- TEMPERATURE CYCLE: ----- MIL-STD-202, METHOD 107D COND. A

NOTE: SPECIFICATIONS WILL VARY OVER OPERATING TEMPERATURE

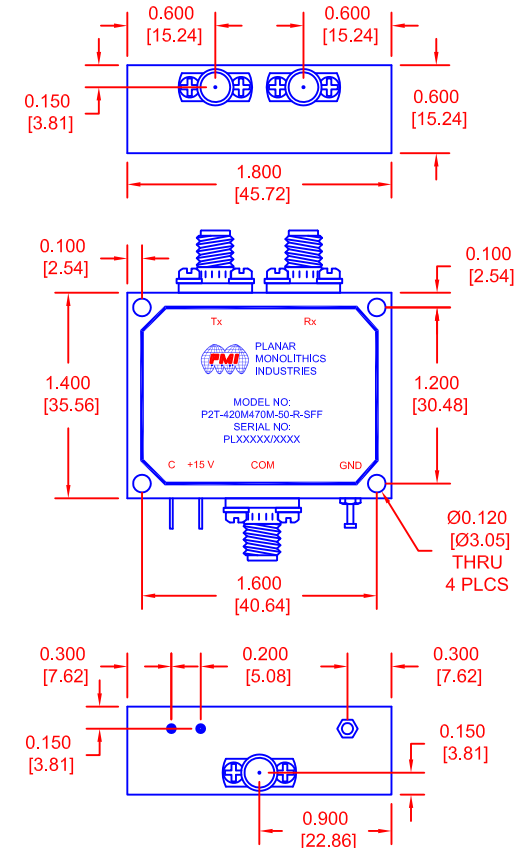
NOTE: THE ABOVE SPECIFICATIONS ARE SUBJECT TO CHANGE OR REVISION

**PMI CONFIDENTIAL AND PROPRIETARY**

ALL DIMENSIONS  
ARE IN INCHES (mm)  
TOLERANCES:  
X.XX  $\pm$ 0.020  
X.XXX  $\pm$ 0.010

REVISIONS				
ZONE	REV.	DESCRIPTION	DATE	APPROVED
	-	PRELIMINARY	2/4/16	JGP

## MECHANICAL OUTLINE



**PLANAR MONOLITHICS INDUSTRIES, INC.**  
7311-F GROVE ROAD  
FREDERICK, MARYLAND 21704 USA  
TEL: (301)-662-5019, FAX: (301)-662-1731  
WEB: www.pmi-rf.com, EMAIL: sales@pmi-rf.com  
ISO 9001 CERTIFIED



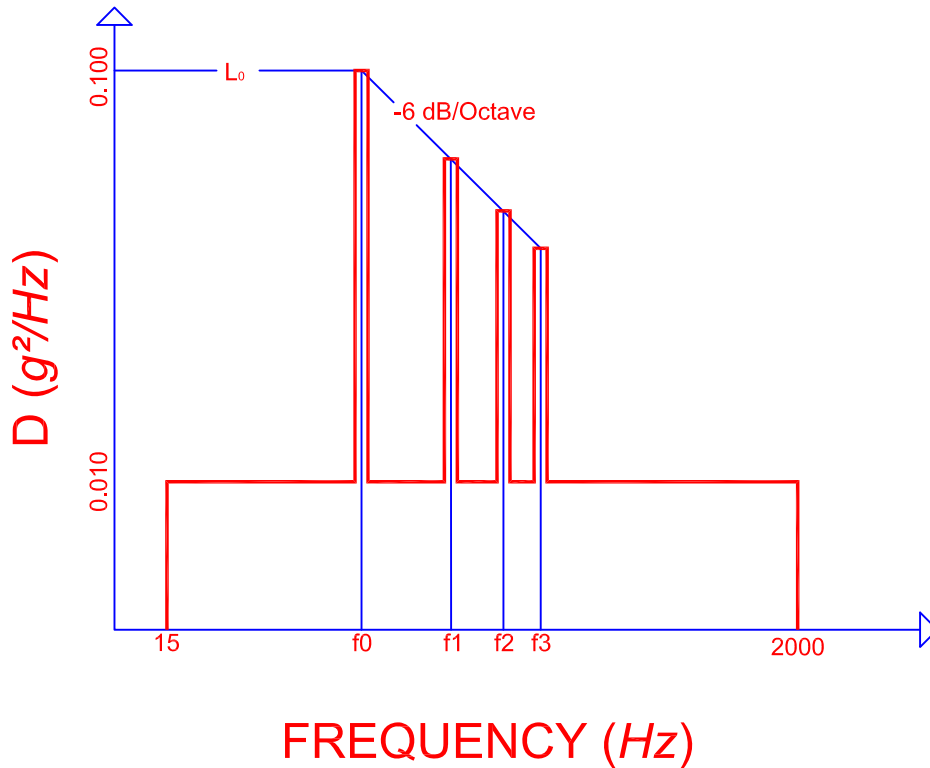
APPROVALS		DATE	TITLE			
DRAWN <i>M. Berry</i>		2/4/16	PRODUCT FEATURE P2T-420M470M-50-R-SFF			
CHECKED			SIZE A	FSCM NO. 05XQ0	DWG NO. PRELIMINARY	REV. -
ISSUED			SCALE N:S		SHEET 1 OF 2	

# DESCRIPTION

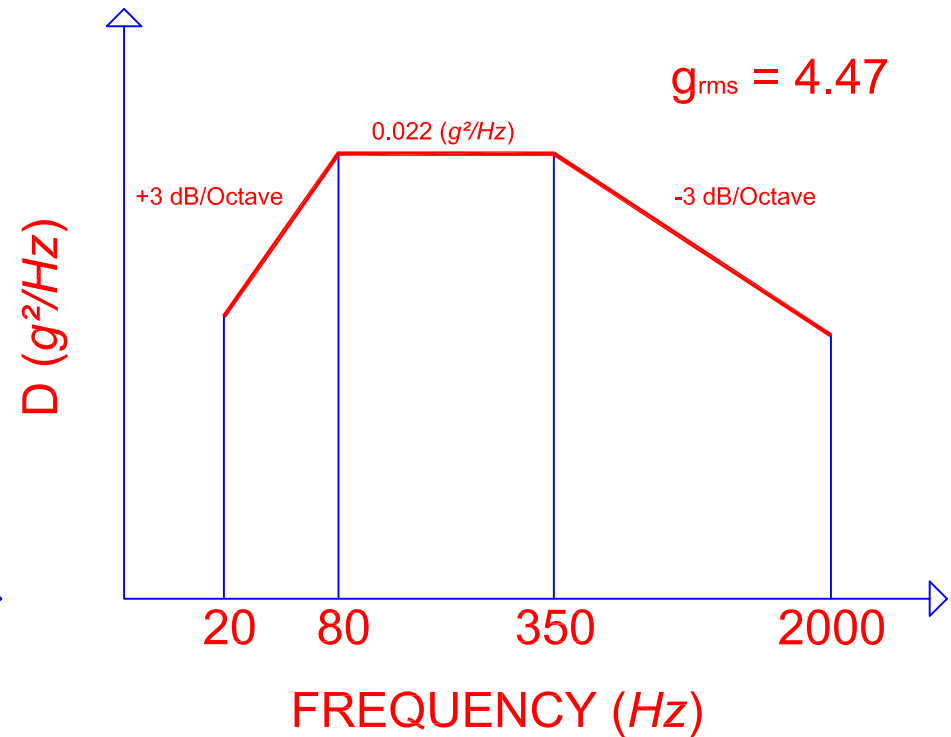
PMI MODEL: P2T-420M470M-50-R-SFF IS A HIGH SPEED REFLECTIVE SINGLE POLE TWO THROW SWITCH CAPABLE OF HOT SWITCHING WITHIN 1  $\mu$ s MAXIMUM. THIS SWITCH OPERATES OVER THE 420 MHz TO 470 MHz RANGE WITH A MINIMUM ISOLATION OF 70 dB.

REVISIONS				
ZONE	REV.	DESCRIPTION	DATE	APPROVED
	-	PRELIMINARY	2/4/16	JP

**FIGURE 1**



**FIGURE 2**



**FIGURE 1 PROPELLER AIRCRAFT VIBRATION EXPOSURE**

	FREQUENCY (Hz)	$L_0$ ( $g^2/Hz$ )	BANDWIDTH (Hz)
F0	105	0.1	99.75 TO 110.25
F1	210	0.025	199.5 TO 220.5
F2	315	0.00625	299.25 TO 330.75
F3	420	0.0015625	399 TO 441

**PLANAR MONOLITHICS INDUSTRIES, INC.**  
 7311-F GROVE ROAD  
 FREDERICK, MARYLAND 21704 USA  
 TEL: (301)-662-5019, FAX: (301)-662-1731  
 WEB: www.pmi-rf.com, EMAIL: sales@pmi-rf.com  
 ISO 9001 CERTIFIED



ALL DIMENSIONS ARE IN INCHES (mm)  
 TOLERANCES:  
 X.XX  $\pm 0.020$   
 X.XXX  $\pm 0.010$

**PMI CONFIDENTIAL AND PROPRIETARY**

NOTE: SPECIFICATIONS WILL VARY OVER OPERATING TEMPERATURE  
 NOTE: THE ABOVE SPECIFICATIONS ARE SUBJECT TO CHANGE OR REVISION

APPROVALS		DATE	TITLE			
DRAWN <i>M. Berry</i>		2/4/16	PRODUCT FEATURE P2T-420M470M-50-R-SFF			
CHECKED			SIZE	FSCM NO.	DWG NO.	REV.
ISSUED			A	05XQ0		PRELIMINARY
			SCALE	N:S	SHEET	2 OF 2