

DESCRIPTION

PMI MODEL DD-20-23 IS A HIGH SPEED DC-COUPLED, DIRECTIONAL DETECTOR WITH 20 dB DIRECTIVITY AND 3 WATT INPUT POWER HANDLING. THE DD-20-23 IS DESIGNED TO OPERATE OVER THE 2.5 TO 3.0 GHz BAND AND THE SIZE IS 2.44" x 1.50" x 0.77"

REVISIONS				
ZONE	REV.	DESCRIPTION	DATE	APPROVED
	-	ORIGINAL JOB # P61015E-1	5/10/02	

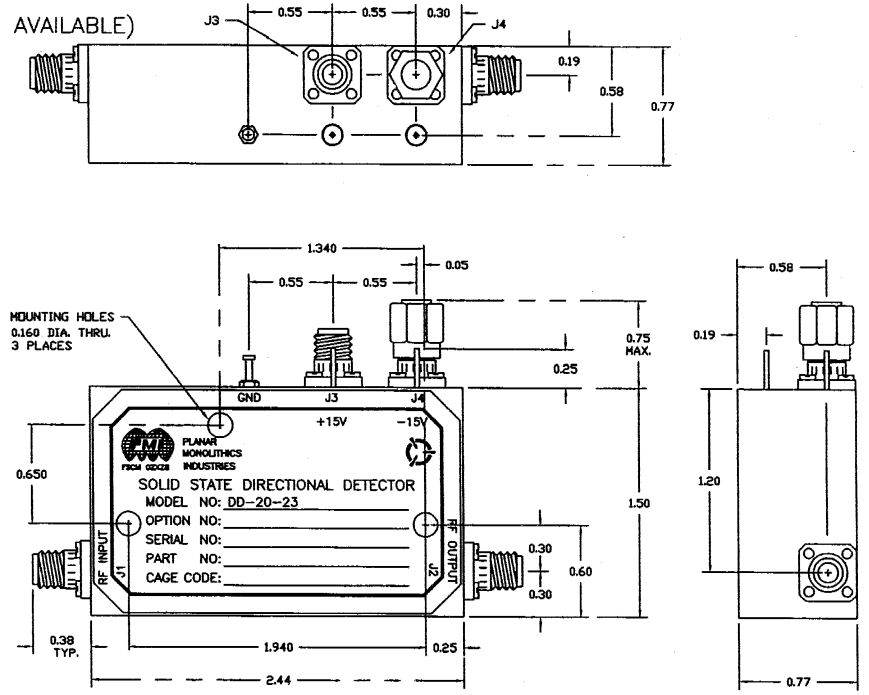
SPECIFICATIONS

- FREQUENCY RANGE: 2.5 TO 3.0 GHz (OTHER FREQUENCY RANGES AVAILABLE)
- INSERTION LOSS: 0.5 dB
- INSERTION LOSS VARIATION: 0.2 dB OVER FREQUENCY
- VSWR INPUT: 1.25:1 MAXIMUM
- IMPEDANCE: 50 OHMS
- MINIMUM DIRECTIVITY: 20 dB (NARROW BAND ONLY)
- MAXIMUM RF INPUT: 3 WATTS
- DETECTOR OUTPUT VOLTAGE:

RF POWER INPUT	VOLTAGE OUTPUT
+26 dBm.	150-220 mV
+23 dBm.	94-130 mV
+20 dBm.	58-83 mV
+16 dBm.	31-46 mV

- VIDEO BANDWIDTH (IF FREQUENCY): 10 MHz (UP TO 500 MHz ARE AVAILABLE)
- DC POWER: ±15V
- SIZE: 2.44" x 1.5" x 0.77"
- WEIGHT: < 4 OUNCES

MECHANICAL OUTLINE



- NOTES:
- 1) DIMENSIONS ARE IN INCHES
 - 2) TOLERANCES: X.XX ±0.020
X.XXX ±0.010
 - 3) WEIGHT: < 4.0 OZ

ENVIRONMENTAL RATINGS

- TEMPERATURE -55°C TO +85°C (OPERATING)
..... -65°C TO +125°C (STORAGE)
- HUMIDITY MIL-STD-202F, METHOD 103B COND. B
- SHOCK MIL-STD-202F, METHOD 213B COND. B
- VIBRATION MIL-STD-202F, METHOD 204D COND. B
- ALTITUDE MIL-STD-202F, METHOD 105C COND. B
- TEMPERATURE CYCLE MIL-STD-202F, METHOD 107D COND. A

NOTE: THE ABOVE SPECIFICATIONS ARE SUBJECT TO CHANGE OR REVISION

CONFIDENTIAL AND PROPRIETARY

PART NO.		PLANAR MONOLITHICS INDUSTRIES FREDERICK, MARYLAND	
APPROVALS	DATE	TITLE	
DRAWN <i>WSP</i>	5/10/02	PRODUCT FEATURE	
CHECKED <i>[Signature]</i>	5/15/02	DD-20-23	
ISSUED <i>[Signature]</i>	5/15/02	DIRECTIONAL DETECTOR	
SIZE	FSCM NO.	DWG NO.	REV.
A	OZXZ8	100-6359	-
SCALE N:S		SHEET 1 of 3	