

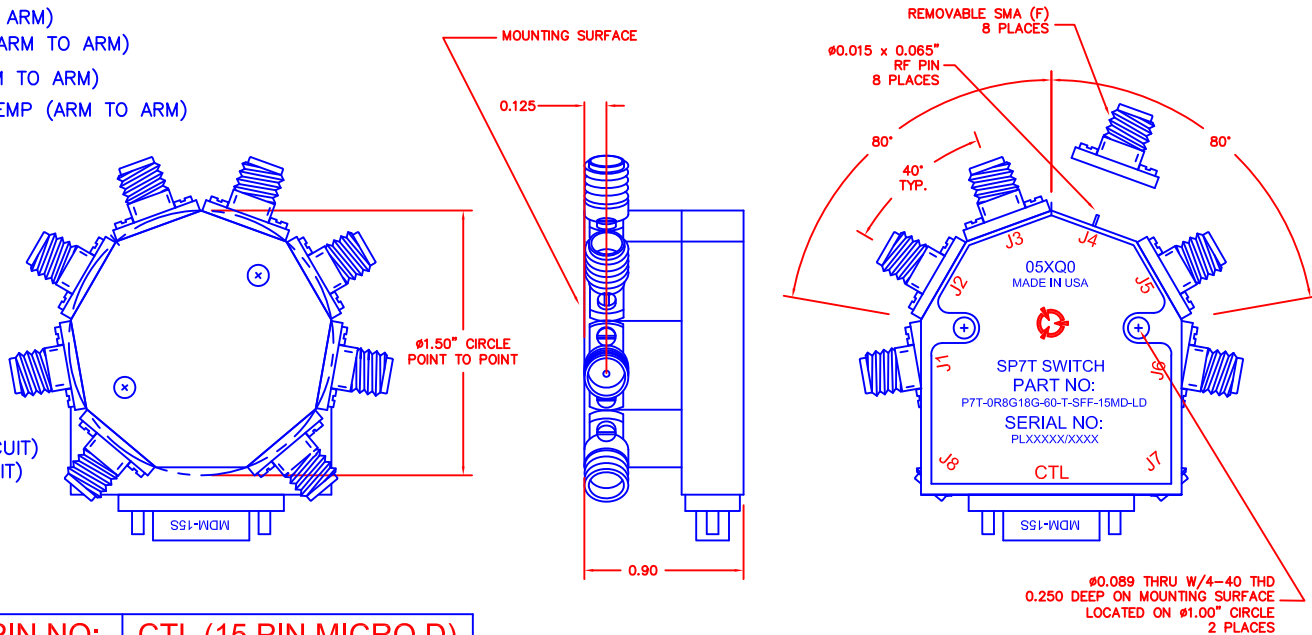
DESCRIPTION:

PMI MODEL P7T-0R8G18G-60-T-SFF-15MD-LD IS A SINGLE POLE SEVEN THROW ABSORPTIVE SWITCH WITH SMA CONNECTORS AND 15 PIN MICRO-D CONTROL CONNECTOR. IT HAS A FREQUENCY RANGE OF 0.8 TO 18GHZ, 4.3 dB MAXIMUM INSERTION LOSS, AND 60dB ISOLATION MINIMUM @ 18GHZ.

REVISIONS				
ZONE	REV.	DESCRIPTION	DATE	APPROVED
	-	PRELIMINARY	4/4/20	
1		SPECS AND MECH UPDATES	4/8/20	

SPECIFICATIONS:

- FREQUENCY: 0.8 GHz TO 18 GHz
- INSERTION LOSS: 4.3dB MAX.
- AMPLITUDE BALANCE: +/- 0.7dB MAX AT ROOM TEMP (ARM TO ARM)
+/- 1.0dB MAX OVER OPERATING TEMP (ARM TO ARM)
- PHASE BALANCE: +/- 8 Degrees MAX AT ROOM TEMP (ARM TO ARM)
+/- 10 Degrees MAX OVER OPERATING TEMP (ARM TO ARM)
- ISOLATION: 0.8 GHz TO 18 GHz: 60dB MIN.
- VSWR: IN/OUT: 2.0:1
OUT/OFF: 2.0:1
- SPEED: RISE: 15ns MAX.
FALL: 15ns MAX.
DELAY ON: 75ns MAX.
DELAY OFF: 75ns MAX.
- INPUT POWER: (CW)+20dBm (STANDARD)
- SURVIVAL POWER: 1 WATT CW, 10 WATTS PEAK 1 us
- CONTROL: TTL LOGIC (15 PIN MICRO D CONNECTOR)
"0" = ON = 0 TO +0.8VDC (CLOSED CIRCUIT)
"1" = OFF = +2 TO +5VDC (OPEN CIRCUIT)
- POWER SUPPLY: +5V @ 350 mA MAX.
-5V @ 100 mA MAX.
- FINISH: PAINTED BLUE



PIN NO:	CTL (15 PIN MICRO D)
1	E1 = "0" - J8 TO J1 ON
2	E2 = "0" - J8 TO J2 ON
3	E3 = "0" - J8 TO J3 ON
4	E4 = "0" - J8 TO J4 ON
5	E5 = "0" - J8 TO J5 ON
6	E6 = "0" - J8 TO J6 ON
7	E7 = "0" - J8 TO J7 ON
8	GND
9	GND
10	GND
11	GND
12	+5 VDC
13	GND
14	-5 VDC
15	GND

ENVIRONMENTAL RATINGS:

- TEMPERATURE: -40°C TO +85°C (OPERATING)
-65°C TO +125°C (STORAGE)
- HUMIDITY: MIL-STD-202F, METHOD 103B COND. B
- SHOCK: MIL-STD-202F, METHOD 213B COND. B
- VIBRATION: MIL-STD-202F, METHOD 204D COND. B
- ALTITUDE: MIL-STD-202F, METHOD 105C COND. B
- TEMPERATURE CYCLE: MIL-STD-202F, METHOD 107D COND. A

ALL DIMENSIONS ARE IN INCHES
TOLERANCES:
X.XX ±0.020
X.XXX ±0.010

NOTE: SPECIFICATIONS WILL VARY OVER OPERATING TEMPERATURE
NOTE: THE ABOVE SPECIFICATIONS ARE SUBJECT TO CHANGE OR REVISION

* Units are designed to meet environmental ratings, but not tested.
If environmental testing is required, please contact sales department.

PART NO.		PLANAR MONOLITHICS INDUSTRIES, INC.			
APPROVALS		DATE	7311-F GROVE ROAD FREDERICK, MARYLAND 21704 USA TEL: 301-662-5019 FAX: 301-662-1731 WEBSITE: www.pmi-rf.com E-MAIL: sales@pmi-rf.com ISO 9001:2008 CERTIFIED		
DRAWN		SPH	4/4/20		
CHECKED			TITLE PRODUCT FEATURE P7T-0R8G18G-60-T-SFF-15MD-LD		
ISSUED			SIZE	FSCM NO.	DWG NO.
			A	05XQ0	PRELIMINARY
			SCALE	N/S	SHEET 1 OF 1
					REV. 1