

DESCRIPTION

PMI MODEL: P4T-0R5G18G-60-T-SFF IS A SINGLE POLE FOUR THROW ABSORPTIVE SWITCH OPERATING OVER THE 0.5 TO 18.0 GHz FREQUENCY RANGE. THIS MODEL OFFERS A MINIMUM OF 60 dB ISOLATION WHILE MAINTAINING A MAXIMUM INSERTION LOSS OF 3.5 dB AND A MAXIMUM VSWR OF 2.0:1. THIS COMPACT HOUSING IS OUTFITTED WITH SMA FEMALE CONNECTORS.

SPECIFICATIONS

- FREQUENCY RANGE: ----- 0.5 TO 18.0 GHz
- INSERTION LOSS: ----- 1.9 dB MAX @ 0.5 GHz TO 4.0 GHz
2.6 dB MAX @ 4.0 GHz TO 8.0 GHz
2.7 dB MAX @ 8.0 GHz TO 12.0 GHz
3.5 dB MAX @ 12.0 GHz TO 18.0 GHz
- ISOLATION: ----- 60 dB MIN
- VSWR: ----- 2.0:1 MAX
- ON/OFF: ----- 100 ns MAX
- DC VOLTAGE: ----- +5 V @ 150 mA MAX
-12 V @ 75 mA MAX

*: 1 μ s MAXIMUM PULSE WIDTH

?: A UNIT LOAD IS 2.0 mA SINK CURRENT AND 50 μ A SOURCE CURRENT

ENVIRONMENTAL RATINGS

- TEMPERATURE: ----- -55 °C TO +100 °C (OPERATING)
-55 °C TO +100 °C (NON-OPERATING)
- ALTITUDE: ----- 50,000 FEET
- VIBRATION: ----- DOUBLE AMPLITUDE: 10 mm @ 2 TO 5 Hz
DOUBLE AMPLITUDE: 5 mm @ 5 TO 10 Hz
- SHOCK: ----- 15G, 11 ms
- HUMIDITY: ----- 0~100% RELATIVE HUMIDITY
- SALT DAMAGE: ----- SHALL WITHSTAND SALT DAMAGE

NOTE: SPECIFICATIONS WILL VARY OVER OPERATING TEMPERATURE

NOTE: THE ABOVE SPECIFICATIONS ARE SUBJECT TO CHANGE OR REVISION

PMI CONFIDENTIAL AND PROPRIETARY

| REVISIONS | | | | |
|-----------|------|-------------|---------|----------|
| ZONE | REV. | DESCRIPTION | DATE | APPROVED |
| | - | PRELIMINARY | 4/20/18 | |
| | | | | |
| | | | | |

LOGIC TABLE

| | A0 | A1 | E |
|---------|----|----|---|
| J0-J1 | 0 | 0 | 1 |
| J0-J2 | 1 | 0 | 1 |
| J0-J3 | 0 | 1 | 1 |
| J0-J4 | 1 | 1 | 1 |
| ALL OFF | X | X | 0 |

PLANAR MONOLITHICS INDUSTRIES, INC.

7311-F GROVE ROAD

FREDERICK, MARYLAND 21704 USA

TEL: (301)-662-5019, FAX: (301)-662-1731

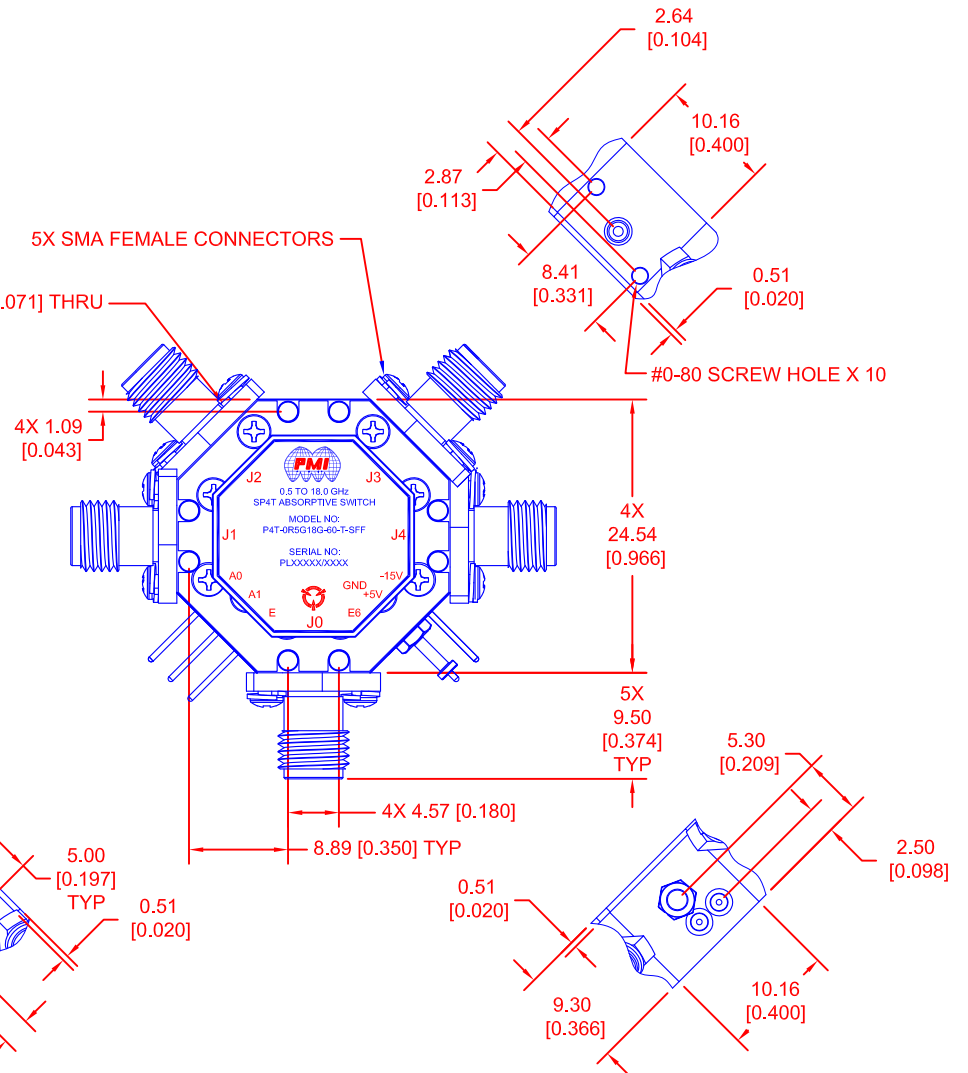
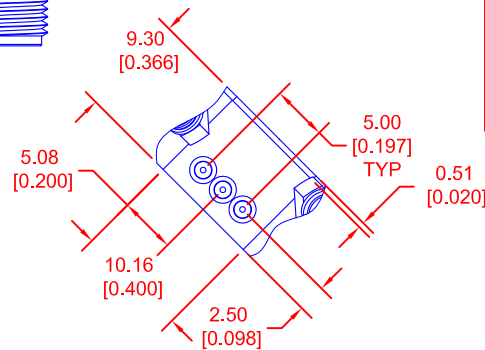
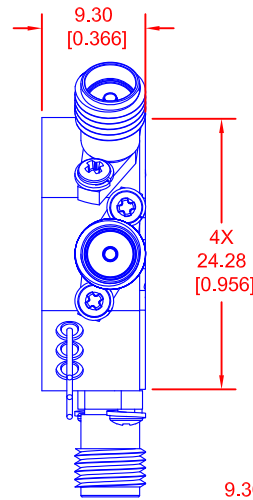
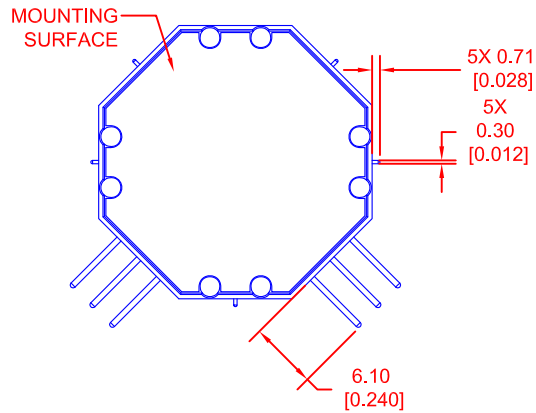
WEB: www.pmi-rf.com, EMAIL: sales@pmi-rf.com

ISO 9001 CERTIFIED



| APPROVALS | | DATE | TITLE | | | |
|-----------------------|--|----------|--|----------|-------------|--------|
| DRAWN <i>M. Berry</i> | | 09/05/17 | PRODUCT FEATURE P4T-0R5G18G-60-T-SFF | | | |
| CHECKED <i>EW</i> | | 4/20/18 | 0.5 to 18.0 GHz Single-Pole Four-Throw Absorptive Switch | | | |
| ISSUED | | | SIZE | FSCM NO. | DWG NO. | REV. |
| | | | A | 05XQ0 | PRELIMINARY | - |
| | | | SCALE | N:S | SHEET | 1 OF 2 |

MECHANICAL OUTLINE



- NOTES:
1. MARKING TO BE DONE WITH A LABEL.
 2. SMA CONNECTORS TO BE IAW MIL-PRF-39012.
 3. MOUNTING SURFACE TO BE FREE OF PAINT.

NOTE: SPECIFICATIONS WILL VARY OVER OPERATING TEMPERATURE
NOTE: THE ABOVE SPECIFICATIONS ARE SUBJECT TO CHANGE OR REVISION

ALL DIMENSIONS ARE IN mm [INCH]

TOLERANCES:
BELOW 4 mm [0.16"] ± 0.3 mm [0.010"]
4 mm TO 16 mm [0.16" TO 0.63"] ± 0.5 mm [0.020"]
ABOVE 16 mm [0.63"] ± 0.7 mm [0.030"]

PMI CONFIDENTIAL AND PROPRIETARY

PLANAR MONOLITHICS INDUSTRIES, INC.
7311-F GROVE ROAD
FREDERICK, MARYLAND 21704 USA
TEL: (301)-662-5019, FAX: (301)-662-1731
WEB: www.pmi-rf.com, EMAIL: sales@pmi-rf.com
ISO 9001 CERTIFIED



| APPROVALS | | DATE | TITLE | | | |
|-----------------------|--|----------|--|----------|-------------|--------|
| DRAWN <i>M. Berry</i> | | 09/05/17 | PRODUCT FEATURE P4T-0R5G18G-60-T-SFF | | | |
| CHECKED <i>EW</i> | | 4/20/18 | 0.5 to 18.0 GHz Single-Pole Four-Throw Absorptive Switch | | | |
| ISSUED | | | SIZE | FSCM NO. | DWG NO. | REV. |
| | | | A | 05XQ0 | PRELIMINARY | - |
| | | | SCALE | N:S | SHEET | 2 OF 2 |