

## DESCRIPTION

PMI MODEL PTB-20-6G18G-2R5-15-220VAC-SFF IS A PORTABLE AMPLIFIER THAT OPERATES OVER THE 6.0 TO 18.0 GHz FREQUENCY RANGE. THIS MODEL PROVIDES 20 dB MINIMUM OF GAIN WITH AN OP1dB OF +15 dBm TYPICAL. THIS AMPLIFIER FEATURES AN ON/OFF SWITCH THAT IS LOCATED ON THE FRONT PANEL. THIS UNIT OPERATES ON 220 TO 230 VAC AND IS SUPPLIED WITH A 6 FOOT STANDARD EU 2-PRONG STYLE POWER CORD.

## SPECIFICATIONS

- FREQUENCY RANGE: \_\_\_\_\_ 6.0 TO 18.0 GHz
- GAIN: \_\_\_\_\_ +20 dB MIN
- GAIN FLATNESS: \_\_\_\_\_ ±3.0 dB MAX
- NOISE FIGURE: \_\_\_\_\_ 2.5 dB MAX
- OP1dB: \_\_\_\_\_ +15 dBm TYP
- MAX INPUT POWER: \_\_\_\_\_ +10 dBm MIN
- VSWR (IN/OUT): \_\_\_\_\_ 2.0:1 MAX
- CONNECTORS (IN/OUT): \_\_\_\_\_ SMA FEMALE
- AC VOLTAGE SUPPLY: \_\_\_\_\_ 220 - 230VAC

\*SUPPLIED WITH FUSE AND 6 FOOT STANDARD EU 2-PRONG STYLE POWER CORD

- SIZE \_\_\_\_\_ (L) 4.92" X (W) 4.92" X (H) 2.26"
- FINISH \_\_\_\_\_ BLUE POWDER COATED

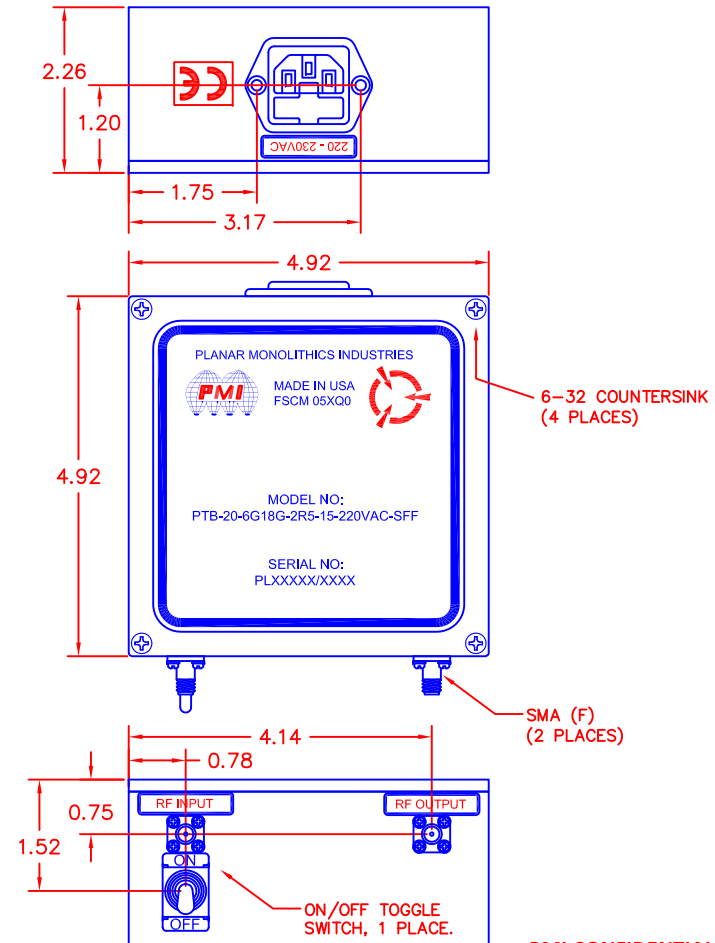
## ENVIRONMENTAL RATINGS

- **TEMPERATURE:** \_\_\_\_\_ -20°C TO +50°C (OPERATING)  
 \_\_\_\_\_ -40°C TO +100°C (NON-OPERATING)
- **HUMIDITY:** \_\_\_\_\_ MIL-STD-202F, METHOD 103B COND. B
- **SHOCK:** \_\_\_\_\_ MIL-STD-202F, METHOD 213B COND. B
- **VIBRATION:** \_\_\_\_\_ MIL-STD-202F, METHOD 204D COND. B
- **ALTITUDE:** \_\_\_\_\_ MIL-STD-202F, METHOD 105C COND. B
- **TEMPERATURE CYCLE:** \_\_\_\_\_ MIL-STD-202F, METHOD 107D COND. A

NOTE: SPECIFICATIONS WILL VARY OVER OPERATING TEMPERATURE  
 NOTE: THE ABOVE SPECIFICATIONS ARE SUBJECT TO CHANGE OR REVISION

NOTES:  
 1) DIMENSIONS ARE IN INCHES  
 2) TOLERANCES: X.XX ±0.020  
 X.XXX ±0.010

REVISIONS				
ZONE	REV.	DESCRIPTION	DATE	APPROVED
	-	PRELIMINARY	7/19/16	
	1	OPERATING TEMP	6/22/18	



## PLANAR MONOLITHICS INDUSTRIES, INC.

7311-F GROVE ROAD  
 FREDERICK, MARYLAND 21704 USA  
 TEL: 301-662-5019 FAX: 301-662-1731  
 WEBSITE: [www.pmi-rf.com](http://www.pmi-rf.com)  
 E-MAIL: [sales@pmi-rf.com](mailto:sales@pmi-rf.com)  
 ISO 9001 CERTIFIED



APPROVALS		DATE	TITLE			
DRAWN <i>SAB</i>		11/9/15	PRODUCT FEATURE			
REDRAWN <i>EMF</i>		7/19/17	PTB-20-6G18G-2R5-15-220VAC-SFF			
ISSUED			SIZE	FSCM NO.	DWG NO.	REV.
			A	05XQ0	PRELIMINARY	1
			SCALE	N: S	SHEET 1 OF 1	