

DESCRIPTION

PMI MODEL PTB-30-6G18G-2R5-15-220VAC-SFF IS A PORTABLE AMPLIFIER THAT OPERATES OVER THE 6.0 TO 18.0 GHz FREQUENCY RANGE. THIS MODEL PROVIDES 30 dB MINIMUM OF GAIN WITH AN OP1dB OF +15 dBm TYPICAL. THIS AMPLIFIER FEATURES AN ON/OFF SWITCH THAT IS LOCATED ON THE FRONT PANEL. THIS UNIT OPERATES ON 220 TO 230 VAC AND IS SUPPLIED WITH A 6 FOOT STANDARD EU 2-PRONG STYLE POWER CORD.

SPECIFICATIONS

- FREQUENCY RANGE: _____ 6.0 TO 18.0 GHz
- GAIN: _____ +30 dB MIN
- GAIN FLATNESS: _____ ±3.0 dB MAX
- NOISE FIGURE: _____ 2.5 dB MAX
- OP1dB: _____ +15 dBm TYP
- MAX INPUT POWER: _____ +10 dBm MIN
- VSWR (IN/OUT): _____ 2.0:1 MAX
- CONNECTORS (IN/OUT): _____ SMA FEMALE
- AC VOLTAGE SUPPLY: _____ 220 - 230VAC

*SUPPLIED WITH FUSE AND 6 FOOT STANDARD EU 2-PRONG STYLE POWER CORD

- SIZE _____ (L) 4.92" X (W) 4.92" X (H) 2.26"
- FINISH _____ BLUE POWDER COATED

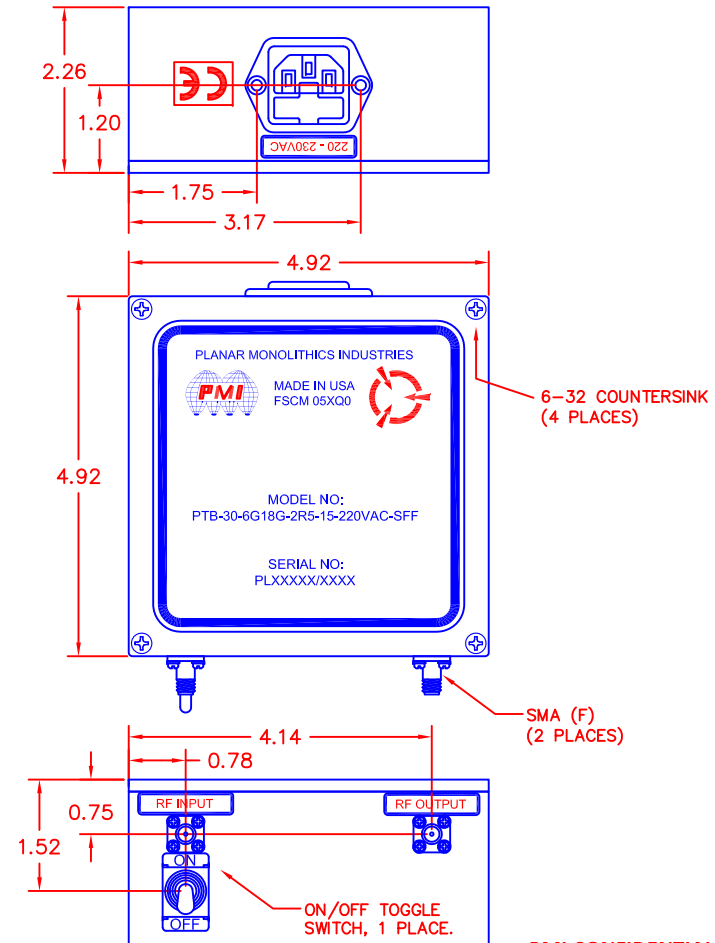
ENVIRONMENTAL RATINGS

- **TEMPERATURE:** _____ -20°C TO +50°C (OPERATING)
 _____ -40°C TO +100°C (NON-OPERATING)
- **HUMIDITY:** _____ MIL-STD-202F, METHOD 103B COND. B
- **SHOCK:** _____ MIL-STD-202F, METHOD 213B COND. B
- **VIBRATION:** _____ MIL-STD-202F, METHOD 204D COND. B
- **ALTITUDE:** _____ MIL-STD-202F, METHOD 105C COND. B
- **TEMPERATURE CYCLE:** _____ MIL-STD-202F, METHOD 107D COND. A

NOTE: SPECIFICATIONS WILL VARY OVER OPERATING TEMPERATURE
 NOTE: THE ABOVE SPECIFICATIONS ARE SUBJECT TO CHANGE OR REVISION

NOTES:
 1) DIMENSIONS ARE IN INCHES
 2) TOLERANCES: X.XX ±0.020
 X.XXX ±0.010

REVISIONS				
ZONE	REV.	DESCRIPTION	DATE	APPROVED
	-	PRELIMINARY	7/19/16	
	1	OPERATING TEMP	6/22/18	



PMI CONFIDENTIAL AND PROPRIETARY

PLANAR MONOLITHICS INDUSTRIES, INC.

7311-F GROVE ROAD
 FREDERICK, MARYLAND 21704 USA
 TEL: 301-662-5019 FAX: 301-662-1731
 WEBSITE: www.pmi-rf.com
 E-MAIL: sales@pmi-rf.com
 ISO 9001 CERTIFIED



APPROVALS		DATE	TITLE			
DRAWN <i>SAB</i>		11/9/15	PRODUCT FEATURE			
REDRAWN <i>EMF</i>		7/19/17	PTB-30-6G18G-2R5-15-220VAC-SFF			
ISSUED			SIZE	FSCM NO.	DWG NO.	REV.
			A	05XQ0	PRELIMINARY	1
			SCALE	N: S		SHEET 1 OF 1