

DESCRIPTION

PMI MODEL: P8T-OR120G-60-T-SFF IS A SINGLE POLE EIGHT THROW, ABSORPTIVE/NON-REFLECTIVE SWITCH MODULE WITH LOW INSERTION LOSS, VERY HIGH ISOLATION AND WITH INTEGRAL TTL DRIVER DESIGNED FOR 0.1 GHz TO 20 GHz OPERATION.

SPECIFICATIONS

- FREQUENCY RANGE:..... 0.1 GHz TO 20 GHz
- INSERTION LOSS:..... 5.75dB TYPICAL, 6 dB MAXIMUM
- ISOLATION:..... 60 dB MINIMUM
- VSWR (ON/OFF):..... 2.0:1 MAXIMUM
- SPEED:..... 100 ns MAXIMUM
(50% TTL to 10%/90% RF)
- SURVIVAL POWER:..... +30 dBm (1 WATT)
- OPERATING POWER:..... +20 dBm MAXIMUM
- CONTROL:..... TTL LOGIC "0"= ON "1"= OFF
- POWER SUPPLY:..... + 5VDC @ 500 mA MAXIMUM
-12VDC @ 100 mA MAXIMUM
- SIZE:..... $\varnothing 1.500$ CIRCLE POINT TO POINT X 0.700 (H)
- WEIGHT:..... 2.5 OUNCES TYPICAL
- FINISH:..... BLUE EPOXY POLIMIDE COATING IAW MIL-C-22750, TYPE I OVER EPOXY POLIMIDE PRIMER IAW MIL-P-23377, TYPE I, CLASS 1 OR 3.

ENVIRONMENTAL RATINGS

- **TEMPERATURE:**..... -55°C TO +85°C (OPERATING)
-65°C TO +125°C (STORAGE)
- **HUMIDITY:**..... MIL-STD-202F, METHOD 103B COND. B
- **SHOCK:**..... MIL-STD-202F, METHOD 213B COND. B
- **VIBRATION:**..... MIL-STD-202F, METHOD 204D COND. B
- **ALTITUDE:**..... MIL-STD-202F, METHOD 105C COND. B
- **TEMPERATURE CYCLE:**..... MIL-STD-202F, METHOD 107G COND. A

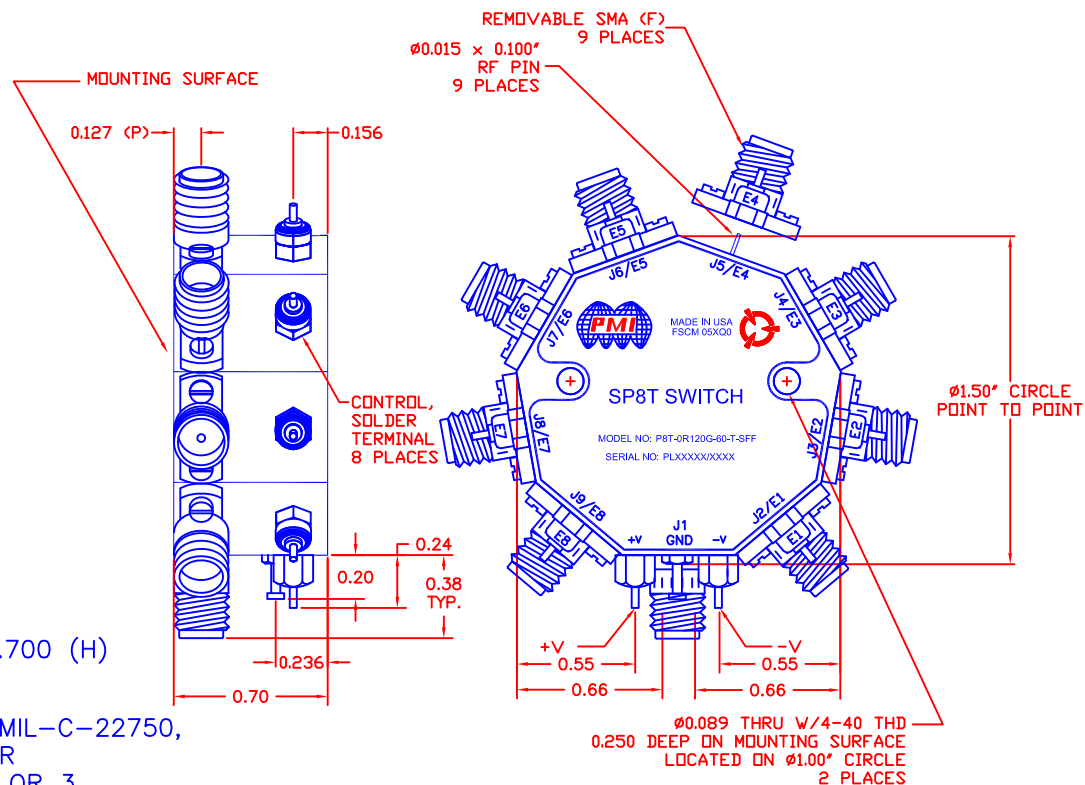
ALL DIMENSIONS ARE IN INCHES

NOTE: SPECIFICATIONS WILL VARY OVER OPERATING TEMPERATURE
NOTE: THE ABOVE SPECIFICATIONS ARE SUBJECT TO CHANGE OR REVISION

TOLERANCES:
X.XX ± 0.020
X.XXX ± 0.010

REVISIONS				
ZONE	REV.	DESCRIPTION	DATE	APPROVED
	-	PRELIMINARY	1/19/15	

MECHANICAL OUTLINE



PMI CONFIDENTIAL AND PROPRIETARY

PLANAR MONOLITHICS INDUSTRIES, INC.

7311-F GROVE ROAD
FREDERICK, MARYLAND 21704 USA
TEL: 301-662-5019 FAX: 301-662-1731
WEBSITE: www.pmi-rf.com
E-MAIL: sales@pmi-rf.com
ISO 9001 CERTIFIED



APPROVALS		DATE	TITLE		
DRAWN <i>K. MASON</i>		1/19/15	PRODUCT FEATURE P8T-OR120G-60-T-SFF		
CHECKED			SIZE A	FSCM NO. 05XQ0	DWG NO. PRELIMINARY
ISSUED			SCALE N:S		REV. -
					SHEET 1 OF 1