

## DESCRIPTION

PMI MODEL NO. APD-2-100M800M-SFF-20W IS A 2-WAY POWER DIVIDER THAT OPERATES OVER THE 100 TO 800 MHz FREQUENCY RANGE. IT HAS A MAXIMUM INSERTION LOSS OF 1.0 dB (ABOVE 3.01 dB SPLIT) AND A MINIMUM ISOLATION OF 23 dB. THIS MODEL IS OUTFITTED WITH SMA FEMALE CONNECTORS.

## SPECIFICATIONS

- FREQUENCY RANGE: ----- 100 TO 800 MHz
- INSERTION LOSS: ----- 1.0 dB MAX (ABOVE 3.01 dB SPLIT)
- VSWR INPUT/OUTPUT: ----- 1.30:1 MAX
- ISOLATION: ----- 23 dB MIN
- AMPLITUDE BALANCE: ----- ±0.2 dB MAX
- PHASE BALANCE: ----- ±2° MAX
- POWER HANDLING: ----- FORWARD: 20 WATTS MAX  
REVERSED: 1 WATT MAX
- IMPEDANCE: ----- 50 OHMS
- CONNECTORS: ----- SMA FEMALE
- FINISH: ----- PAINTED BLUE

## ENVIRONMENTAL RATINGS

- TEMPERATURE: ----- -55 °C TO +85 °C (OPERATING)  
-65 °C TO +125 °C (STORAGE)
- HUMIDITY: ----- UP TO 95%, NON-CONDENSING (OPERATING)
- SHOCK: ----- MIL-STD-202, METHOD 213B COND. B
- VIBRATION: ----- MIL-STD-202, METHOD 204D COND. B
- ALTITUDE: ----- MIL-STD-202, METHOD 105C COND. B
- TEMPERATURE CYCLE: ----- MIL-STD-202, METHOD 107D COND. A

NOTE: SPECIFICATIONS WILL VARY OVER OPERATING TEMPERATURE

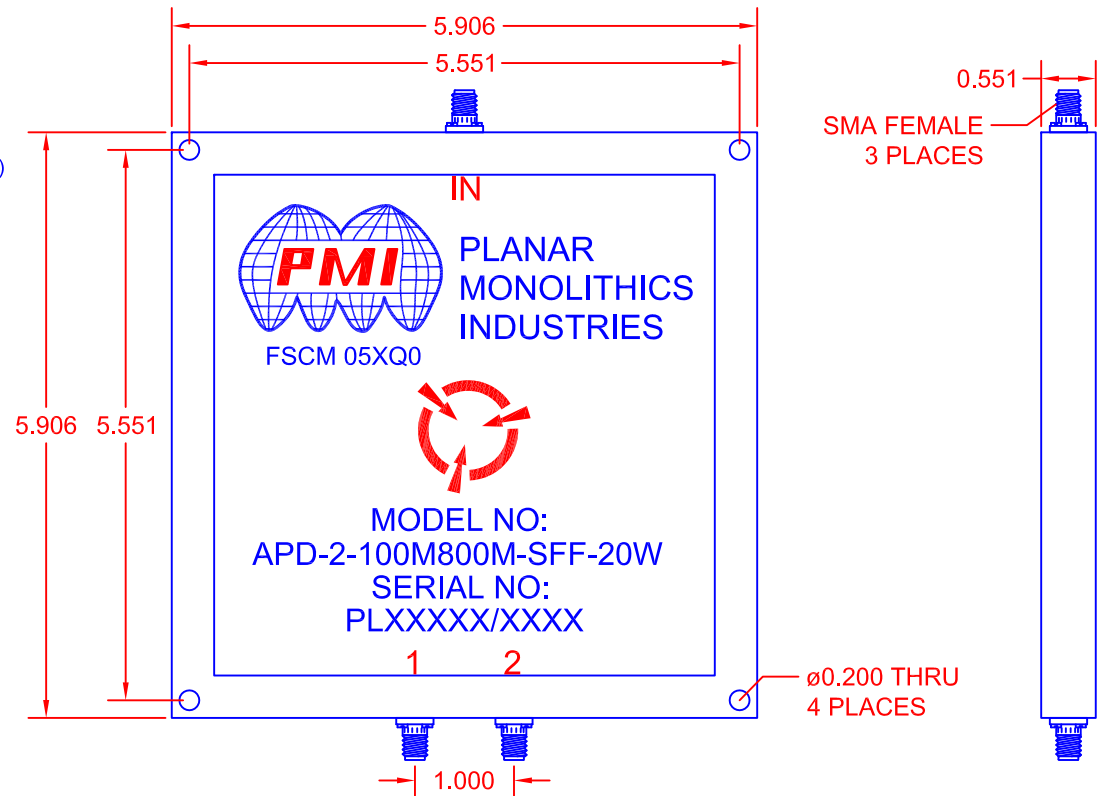
NOTE: THE ABOVE SPECIFICATIONS ARE SUBJECT TO CHANGE OR REVISION

**PMI CONFIDENTIAL AND PROPRIETARY**

ALL DIMENSIONS  
ARE IN INCHES [mm]  
TOLERANCES:  
X.XX ±0.020  
X.XXX ±0.010

REVISIONS				
ZONE	REV.	DESCRIPTION	DATE	APPROVED
	-	PRELIMINARY	5/9/2019	

## MECHANICAL OUTLINE



**PLANAR MONOLITHICS INDUSTRIES, INC.**  
7311-F GROVE ROAD  
FREDERICK, MARYLAND 21704 USA  
TEL: (301)-662-5019, FAX: (301)-662-1731  
WEB: [www.pmi-rf.com](http://www.pmi-rf.com), EMAIL: [sales@pmi-rf.com](mailto:sales@pmi-rf.com)  
ISO 9001 CERTIFIED



APPROVALS		DATE	TITLE			REV.
DRAWN <i>EW</i>		5/9/19	PRODUCT FEATURE APD-2-100M800M-SFF-20W			-
REDRAWN			SIZE A	FSCM NO. 05XQ0	DWG NO. PRELIMINARY	
ISSUED			SCALE N:S	SHEET 1 OF 1		