

DESCRIPTION

PMI MODEL: P2T-400M2G-50-T-SFF IS AN ABSORPTIVE 1 WATT SINGLE POLE, DOUBLE THROW SWITCH THAT OPERATES OVER THE 400 MHz TO 2.0 GHz FREQUENCY RANGE. THIS MODEL OFFERS A MINIMUM OF 50 dB ISOLATION AND A MAXIMUM INSERTION LOSS OF 1.0 dB. THE COMPACT 1.60" x 1.20" x 0.48" HOUSING IS OUTFITTED WITH SMA FEMALE CONNECTORS.

SPECIFICATIONS

- FREQUENCY RANGE: --- 0.4 TO 2.0 GHz
- ISOLATION: ----- 50 dB MIN
- INSERTION LOSS: ----- 1 dB MAX
WITHIN 0.5 dB AMPLITUDE TRACKING FOR ALL OUTPUTS
- VSWR: ----- 1.5:1 MAX
- RF SURVIVAL POWER: --- 1 W CW MAX
75 W PEAK (1 μ s PULSE WIDTH) MAX
- SWITCHING SPEED: --- 2 μ s MAX
- DC POWER SUPPLY: --- +5V \pm 5% @ 75 mA MAX
-12 TO 15V @ 50 mA MAX
- CONTROL VOLTAGE: --- TTL COMPATIBLE
3.2 mA MAX SINK CURRENT @ LOGIC "0" = 0.5 V
750 μ A MAX SOURCE CURRENT @ LOGIC "1" = 3.5 V
- CONTROL LOGIC: ----- LOGIC "0" = ON (INSERTION LOSS)
LOGIC "1" = OFF (ISOLATION)
- CONNECTORS: ----- RF: SMA FEMALE (3 PLACES)
GND/LOGIC/POWER: SOLDER TERMINAL (5 PLACES)
- WEIGHT: ----- 85g [3.00 oz] MAX
- SIZE: ----- (L) 40.6mm x (W) 30.5mm x (H) 12.2mm
[(L) 1.60" x (W) 1.20" x (H) 0.48"
EXCLUDING CONNECTORS
- FINISH: ----- PAINTED BLUE

ENVIRONMENTAL RATINGS

- TEMPERATURE: ----- -65 $^{\circ}$ C TO +85 $^{\circ}$ C (OPERATING)
-65 $^{\circ}$ C TO +95 $^{\circ}$ C (STORAGE)
- HUMIDITY: ----- MIL-HDBK-5400 4.6.2.4, 100% RH
- SHOCK: ----- MIL-STD-202, METHOD 213, COND. B (75G, 6 ms)
- VIBRATION: ----- MIL-STD-202, METHOD 204A, COND. B
(LESSER OF 0.06" DOUBLE AMPLITUDE OR 15G)
- TEMPERATURE CYCLING: --- MIL-STD-202, METHOD 102, COND. D (5 CYCLES)

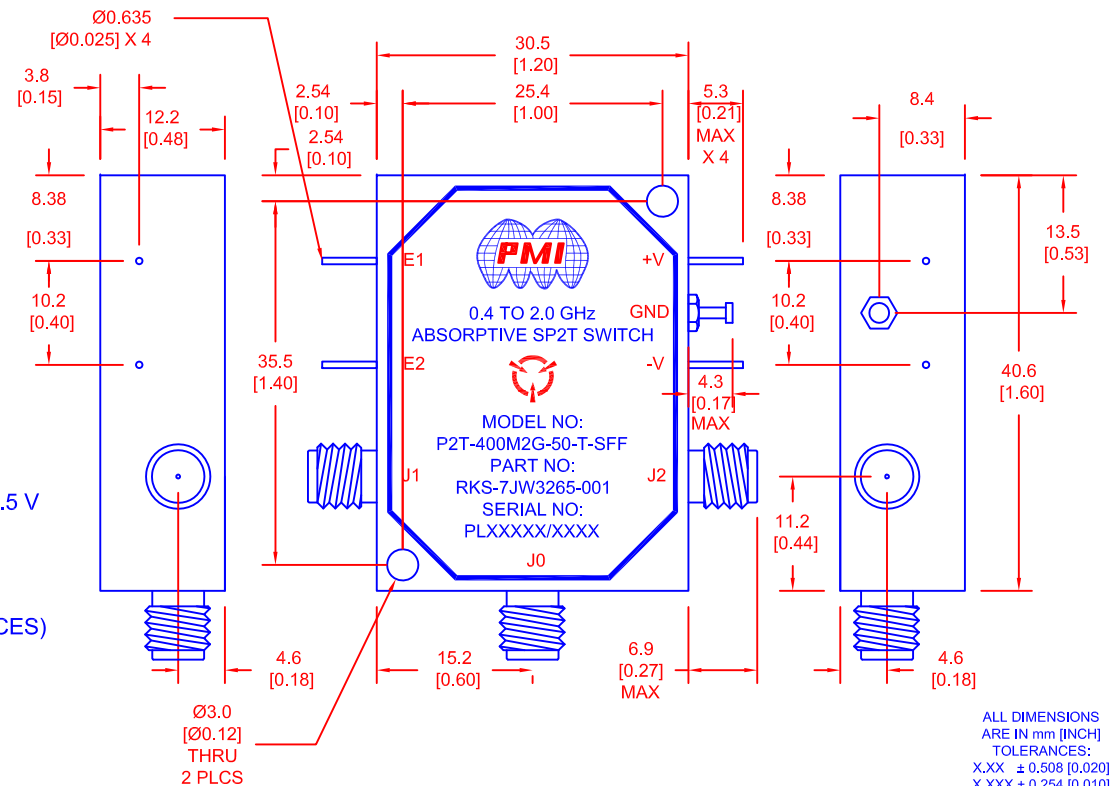
NOTE: SPECIFICATIONS WILL VARY OVER OPERATING TEMPERATURE

NOTE: THE ABOVE SPECIFICATIONS ARE SUBJECT TO CHANGE OR REVISION

PMI CONFIDENTIAL AND PROPRIETARY

REVISIONS				
ZONE	REV.	DESCRIPTION	DATE	APPROVED
	-	PRELIMINARY	11/17/17	
	1	UPDATES	12/12/17	
	2	DIM UPDATES	12/20/17	

MECHANICAL OUTLINE



PLANAR MONOLITHICS INDUSTRIES, INC.

7311-F GROVE ROAD

FREDERICK, MARYLAND 21704 USA

TEL: (301)-662-5019, FAX: (301)-662-1731

WEB: www.pmi-rf.com, EMAIL: sales@pmi-rf.com

ISO 9001 CERTIFIED



APPROVALS		DATE	TITLE		
DRAWN <i>M. Berry</i>		11/17/17	PRODUCT FEATURE P2T-400M2G-50-T-SFF 0.4 to 2.0 GHz Single Pole Double Throw Absorptive Switch		
CHECKED			SIZE A	FSCM NO. 05XQ0	DWG NO. PRELIMINARY
ISSUED			SCALE N:S	SHEET 1 OF 1	REV. 2