

DESCRIPTION

PMI MODEL PTB-27-0R1G6G-26-SFF-DC12-220VAC IS A PORTABLE AMPLIFIER THAT OPERATES OVER THE 0.1 TO 6.0 GHz FREQUENCY RANGE. THIS MODEL PROVIDES 27 dB OF TYPICAL GAIN WITH AN OP1dB OF +26 dBm MIN (0.1 TO 6GHz). THIS AMPLIFIER FEATURES AN ON / OFF SWITCH THAT IS LOCATED ON THE FRONT PANEL. THIS AMPLIFIER CAN OPERATE ON EITHER 220 to 230 VAC OR VIA AN EXTERNAL 12 VDC BATTERY PACK OR DC VOLTAGE SUPPLY.

SPECIFICATIONS

- FREQUENCY RANGE:..... 0.1 GHz TO 6.0 GHz
- GAIN: 27 dB TYP.
- GAIN FLATNESS:..... ±1.5 dB TYP.
- NOISE FIGURE:..... 5.0 dB TYP.*
- OP1dB:..... +26 dBm MIN.
- VSWR IN/OUT: 2.0:1 TYP.
- MAXIMUM RF INPUT: +18 dBm
- AC VOLTAGE SUPPLY:..... 220 to 230 VAC*
- DC VOLTAGE SUPPLY (EXTERNAL):..... +12 VDC
- CONNECTOR IN/OUT:..... SMA FEMALE
- SIZE: 4.92" X 4.92" X 2.1"
- FINISH:..... BLUE POWDER COATED

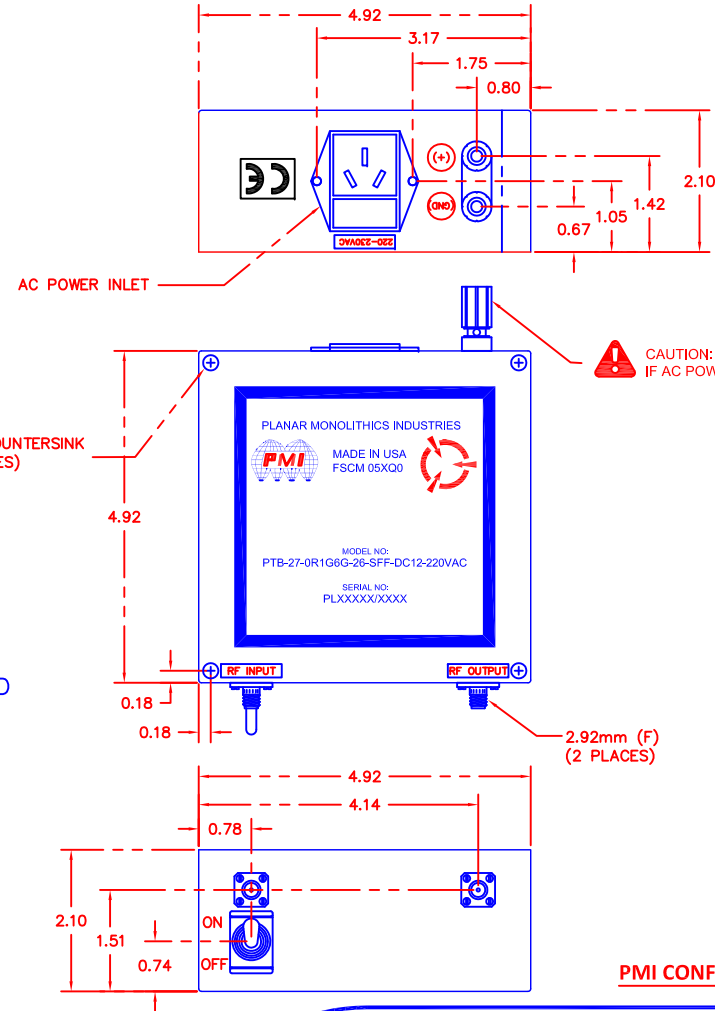
*SUPPLIED WITH A 6 FOOT STANDARD AUSTRALIAN 3-PRONG STYLE POWER CORD
 *NOISE FIGURE BELOW 300MHz PRESENTS RAPID DEGRADATION.

ENVIRONMENTAL RATINGS

- **TEMPERATURE:**..... -40°C TO +85°C (OPERATING)
 -40°C TO +100°C (NON-OPERATING)
- **HUMIDITY:**..... MIL-STD-202F, METHOD 103B COND. B
- **SHOCK:**..... MIL-STD-202F, METHOD 213B COND. B
- **VIBRATION:**..... MIL-STD-202F, METHOD 204D COND. B
- **ALTITUDE:**..... MIL-STD-202F, METHOD 105C COND. B
- **TEMPERATURE CYCLE:**..... MIL-STD-202F, METHOD 107D COND. A

NOTE: SPECIFICATIONS WILL VARY OVER OPERATING TEMPERATURE
 NOTE: THE ABOVE SPECIFICATIONS ARE SUBJECT TO CHANGE OR REVISION

REVISIONS				
ZONE	REV.	DESCRIPTION	DATE	APPROVED
	1	PRELIMINARY	9/29/17	



PMI CONFIDENTIAL AND PROPRIETARY

PLANAR MONOLITHICS INDUSTRIES, INC.

7311-F GROVE ROAD
 FREDERICK, MARYLAND 21704 USA
 TEL: 301-662-4700 FAX: 301-662-4938
 WEBSITE: www.pmi-rf.com
 E-MAIL: sales@pmi-rf.com
 ISO 9001 CERTIFIED



APPROVALS		DATE	TITLE		
DRAWN <i>S. PALACIO</i>		9/29/17	PRODUCT FEATURE		
REDRAWN			PTB-27-0R1G6G-26-SFF-DC12-220VAC		
ISSUED			SIZE A	FSCM NO. 05XQ0	DWG NO. PRELIMINARY
			SCALE N: S	REV. 1	
			SHEET 1 OF 1		

NOTES:
 1) DIMENSIONS ARE IN INCHES
 2) TOLERANCES: X.XX ±0.020
 X.XXX ±0.010