

DESCRIPTION

THE MODEL P8T-100M6G-80-T-SFF-JW IS A HIGH SPEED, SINGLE POLE, EIGHT THROW, ABSORPTIVE SWITCH CAPABLE OF SWITCHING WITHIN 200ns. THE FREQUENCY RANGE IS 0.1 TO 6.0 GHz AND THIS SWITCH HAS OVER 70dB OF ISOLATION.

SPECIFICATIONS

- FREQUENCY: 100 MHz TO 6.0 GHz
- INSERTION LOSS: 4.5dB Typ., 4.75dB Maximum
- OPERATING INPUT POWER: +23dBm CW Maximum
- SURVIVAL INPUT POWER: +33dBm CW Maximum
- VSWR: 2.0:1 Maximum
- ISOLATION: 80dB Typ., 70dB Minimum
- SWITCHING SPEED: 150nsec Typ., 200nsec Maximum
- CONTROL SIGNAL: EIGHT LINE TTL
 - E1 CONTROLS J1-J2
 - E2 CONTROLS J1-J3
 - E3 CONTROLS J1-J4
 - E4 CONTROLS J1-J5
 - E5 CONTROLS J1-J6
 - E6 CONTROLS J1-J7
 - E7 CONTROLS J1-J8
 - E8 CONTROLS J1-J9
 - "0" ISOLATION
 - "1" INSERTION LOSS
- DC VOLTAGE: +5VDC & -12VDC
- POWER AND CONTROL: SOLDER PINS
- CONNECTORS: SMA (F)
- FINISH: PAINTED BLUE
- SIZE: 4.0" X 1.5" X 0.4"

ENVIRONMENTAL RATINGS

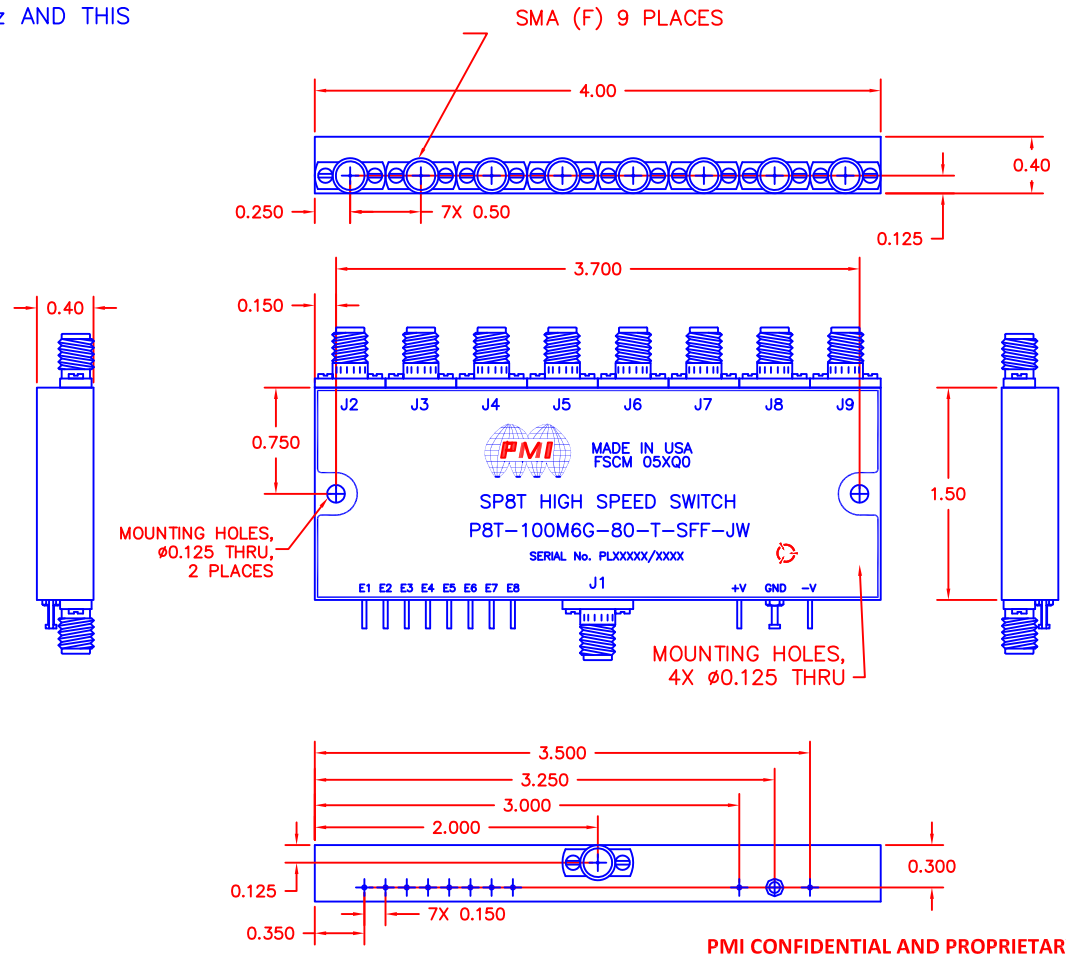
- TEMPERATURE: -45°C TO +85°C (OPERATING)
-54°C TO +125°C (STORAGE)
- HUMIDITY: MIL-STD-202F, METHOD 103B COND. B
- SHOCK: MIL-STD-202F, METHOD 213B COND. C
- VIBRATION: MIL-STD-202F, METHOD 204D COND. B

Note: Environmental testing and ESS will be met, but actual testing is not done by PMI
Actual screening is available for an additional charge.

NOTE: THE ABOVE SPECIFICATIONS ARE SUBJECT TO CHANGE OR REVISION

ALL DIMENSIONS ARE IN INCHES
TOLERANCES:
X.XX ±0.020
X.XXX ±0.010
WEIGHT: 2.75 oz.

REVISIONS				
ZONE	REV.	DESCRIPTION	DATE	APPROVED
	-	PRELIMINARY	12/2/14	



PMI CONFIDENTIAL AND PROPRIETARY

PLANAR MONOLITHICS INDUSTRIES, INC.

7311-F GROVE ROAD
FREDERICK, MARYLAND 21704 USA
TEL: 301-662-5019 FAX: 301-662-1731
WEBSITE: www.pmi-rf.com
E-MAIL: sales@pmi-rf.com
ISO 9001:2000 CERTIFIED



APPROVALS		DATE	TITLE			
DRAWN <i>K. MASON</i>		12/2/14	PRODUCT FEATURE P8T-100M6G-80-T-SFF-JW			
CHECKED			SIZE A	FSCM NO. 05XQ0	DWG NO. PRELIMINARY	REV. -
ISSUED			SCALE N:S	SHEET 1 OF 1		