

## DESCRIPTION

PMI MODEL: P2T-1D2G1D4G-60-R-515-SFF-10WCW IS A SINGLE POLE TWO THROW REFLECTIVE SWITCH THAT OPERATES OVER THE 1.2 TO 1.4 GHz FREQUENCY RANGE. THIS SWITCH HANDLES INPUT POWER OF 10 WATTS CW AND HAS A TYPICAL SWITCHING SPEED OF 100 ns.

## SPECIFICATIONS

- FREQUENCY RANGE: 1.2 GHz TO 1.4 GHz
- INSERTION LOSS: 1.0 dB MAXIMUM
- ISOLATION: 60 dB MINIMUM
- VSWR: 1.4:1 MAXIMUM
- SWITCHING SPEED: 100 ns TYPICAL  
(50% TTL TO 10%/90% RF)
- CONTROL LOGIC: SINGLE CONTROL TTL TOGGLE  
LOGIC "0" = J1-J2 ON  
LOGIC "1" = J1-J3 ON
- RF CONNECTORS: SMA FEMALE (3X)
- POWER SUPPLY: +5 V @ 100 mA MAXIMUM  
-15 V @ 75 mA MAXIMUM
- RF POWER (OPERATING): 10 WATTS CW MAXIMUM
- SIZE: 1.2" (L) X 1.00" (W) X 0.50" (H)
- FINISH: BLUE EPOXY POLIMIDE COATING  
IAW MIL-C-22750, TYPE I OVER  
EPOXY POLIMIDE PRIMER IAW  
MIL-P-23377, TYPE I,  
CLASS 1 OR 3.

## ENVIRONMENTAL RATINGS

- TEMPERATURE: -55 °C TO +85 °C (OPERATING)  
-65 °C TO +125 °C (STORAGE)
- HUMIDITY: MIL-STD-202F, METHOD 103B COND. B
- SHOCK: MIL-STD-202F, METHOD 213B COND. B
- VIBRATION: MIL-STD-202F, METHOD 204D COND. B
- ALTITUDE: MIL-STD-202F, METHOD 105C COND. B
- TEMPERATURE CYCLE: MIL-STD-202F, METHOD 107D COND. A

NOTE: SPECIFICATIONS WILL VARY OVER OPERATING TEMPERATURE

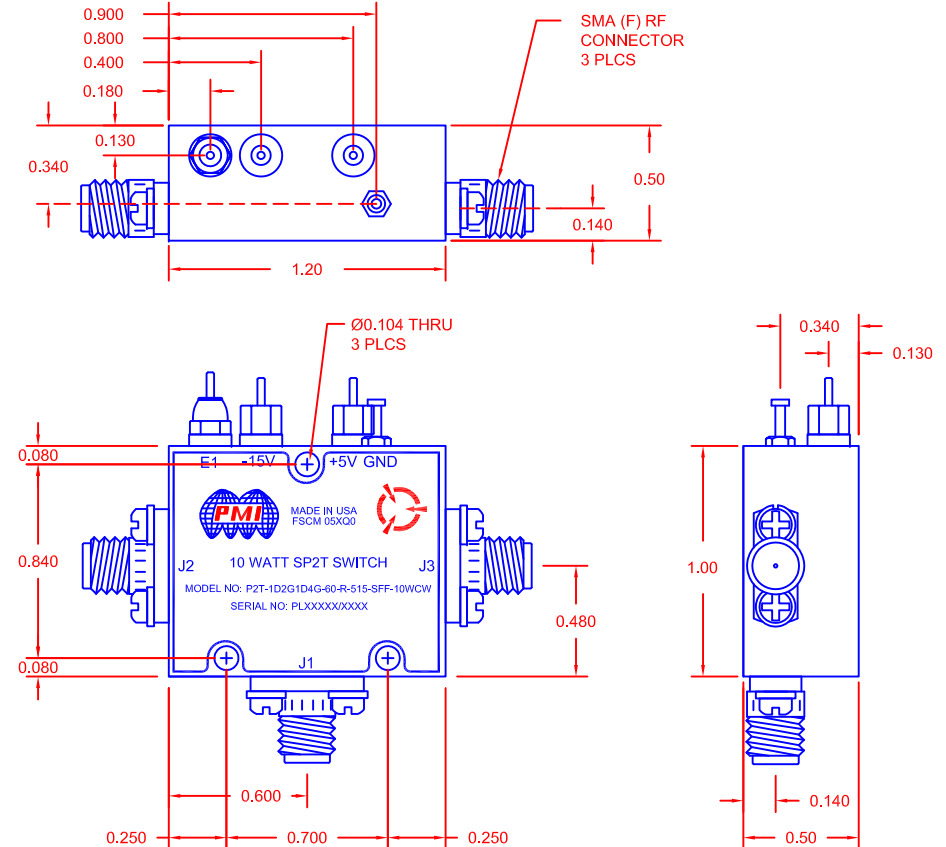
NOTE: THE ABOVE SPECIFICATIONS ARE SUBJECT TO CHANGE OR REVISION

ALL DIMENSIONS ARE IN INCHES  
TOLERANCES:  
X.XX ±0.020  
X.XXX ±0.010

**PMI CONFIDENTIAL AND PROPRIETARY**

| REVISIONS |      |             |         |          |
|-----------|------|-------------|---------|----------|
| ZONE      | REV. | DESCRIPTION | DATE    | APPROVED |
|           | -    | PRELIMINARY | 9/20/18 |          |
|           |      |             |         |          |
|           |      |             |         |          |

## MECHANICAL OUTLINE



**PLANAR MONOLITHICS INDUSTRIES, INC.**  
7311-F GROVE ROAD  
FREDERICK, MARYLAND 21704 USA  
TEL: (301)-662-5019, FAX: (301)-662-1731  
WEB: [www.pmi-rf.com](http://www.pmi-rf.com), EMAIL: [sales@pmi-rf.com](mailto:sales@pmi-rf.com)  
ISO 9001 CERTIFIED



| APPROVALS        |  | DATE    | TITLE  |                   |                        |
|------------------|--|---------|--|-------------------|------------------------|
| DRAWN <i>JPH</i> |  | 9/20/18 | PRODUCT FEATURE<br>P2T-1D2G1D4G-60-R-515-SFF-10WCW |                   |                        |
| CHECKED          |  |         | SIZE<br>A  | FSCM NO.<br>05XQ0 | DWG NO.<br>PRELIMINARY |
| ISSUED           |  |         | SCALE<br>N:S                                       |                   | SHEET<br>1 OF 1        |