

DESCRIPTION

PMI MODEL NUMBER PS-204-1G2G-8B-SFF-LM IS A 1.0 TO 2.0 GHz 8 BIT DIGITALLY CONTROLLED PHASE SHIFTER WITH CAPABILITY FOR PHASE SHIFTING FROM 0° TO 204°, WITH RESOLUTION AS FINE AS 0.8°.

SPECIFICATIONS

- FREQUENCY RANGE: 1.0 TO 2.0 GHz
- RF INPUT POWER: 10 dBm
- PHASE CONTROL RANGE: 204° TYP
- LSB: 0.8°
- SWITCHING SPEED: 1 μs, 500 ns TYP
- INSERTION LOSS: 6.0 dB TYP
- AMPLITUDE ERROR: ±1.0 dB MAX
- PHASE FLATNESS: ±10.0° MAX
- ABSOLUTE MAXIMUM INPUT POWER W/O DAMAGE: 20 WATTS @ J1(INPUT)
- CONNECTORS (RF): SMA FEMALE
- CONNECTORS (CONTROL): 15 PIN SUBMINIATURE D (MALE) MATING CONNECTOR SUPPLIED
- RF IMPEDANCE: 50 Ω
- VSWR: 2.5:1 TYP
- LOGIC BITS: 8 (SEE PIN FUNCTION TABLE)
- LOGIC: TTL COMPATIBLE
- POWER SUPPLY: +12 V TO +15 V @ 50 mA TYP
- SIZE: 2.00" X 2.10" X 0.50"
- FINISH: BLUE EPOXY POLIMIDE COATING IAW MIL-C-22750, TYPE I OVER EPOXY POLIMIDE PRIMER IAW MIL-P-23377, TYPE I, CLASS 1 OR 3.

FEATURES

- SINGLE POSITIVE VOLTAGE SUPPLY OPERATION
- LOW DC CURRENT CONSUMPTION
- SLIM-LINE DESIGN

ENVIRONMENTAL RATINGS

- TEMPERATURE: -40 °C TO +85 °C (OPERATING)
- SHOCK: MIL-STD-202F, METHOD 213B COND. B
- VIBRATION: MIL-STD-202F, METHOD 204D COND. B
- ALTITUDE: MIL-STD-202F, METHOD 105C COND. B
- TEMPERATURE CYCLE: MIL-STD-202F, METHOD 107D COND. A

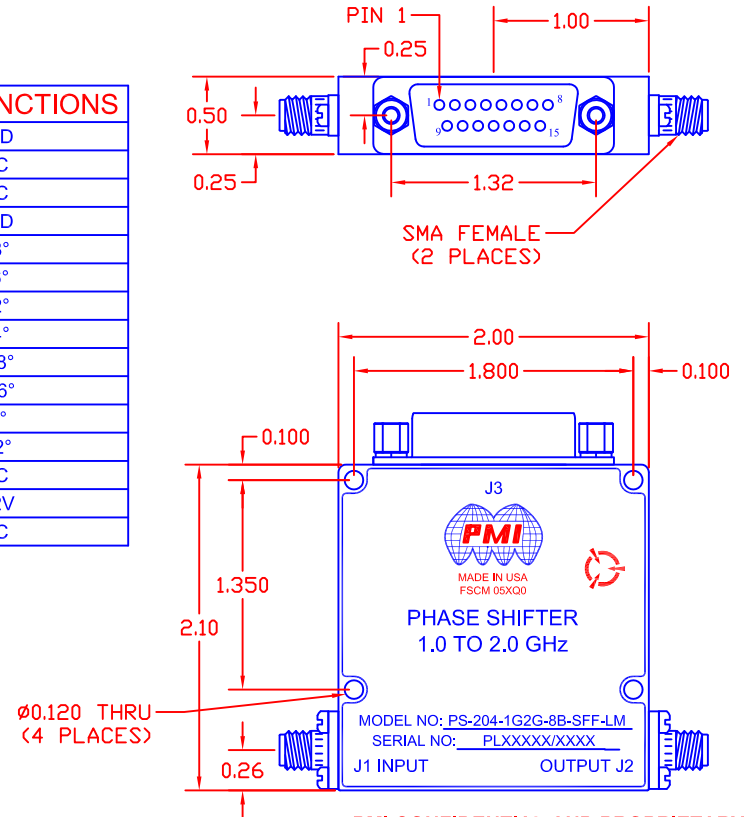
NOTE: SPECIFICATIONS WILL VARY OVER OPERATING TEMPERATURE

NOTE: THE ABOVE SPECIFICATIONS ARE SUBJECT TO CHANGE OR REVISION

| REVISIONS | | | | |
|-----------|------|-------------|---------|----------|
| ZONE | REV. | DESCRIPTION | DATE | APPROVED |
| | - | PRELIMINARY | 9/10/16 | |
| | | | | |
| | | | | |

MECHANICAL OUTLINE

| PIN NO: | J3 PIN FUNCTIONS |
|---------|------------------|
| 1 | GND |
| 2 | N/C |
| 3 | N/C |
| 4 | GND |
| 5 | 0.8° |
| 6 | 1.6° |
| 7 | 3.2° |
| 8 | 6.4° |
| 9 | 12.8° |
| 10 | 25.6° |
| 11 | 51° |
| 12 | 102° |
| 13 | N/C |
| 14 | +12V |
| 15 | N/C |



PMI CONFIDENTIAL AND PROPRIETARY

PLANAR MONOLITHICS INDUSTRIES, INC.
 7311-F GROVE ROAD
 FREDERICK, MARYLAND 21704 USA
 TEL: (301)-662-5019, FAX: (301)-662-1731
 WEB: www.pmi-rf.com, EMAIL: sales@pmi-rf.com
 ISO 9001 CERTIFIED



ALL DIMENSIONS ARE IN INCHES
 TOLERANCES:
 X.XX ±0.020
 X.XXX ±0.010

| APPROVALS | | DATE | TITLE | | | |
|---------------------|--|---------|--|----------|-------------|------|
| DRAWN <i>E.M.F.</i> | | 9/10/16 | PRODUCT FEATURE PS-204-1G2G-8B-SFF-LM 1.0 TO 2.0 GHz PHASE SHIFTER | | | |
| CHECKED | | | SIZE | FSCM NO. | DWG NO. | REV. |
| ISSUED | | | A | 05XQ0 | PRELIMINARY | - |
| SCALE N:S | | | SHEET 1 OF 1 | | | |