

DESCRIPTION

PMI MODEL: PSWN-1140-4DR-STD-118-HS15NS-OPT5G8G-P28V IS A 5 TO 8 GHz, REFLECTIVE SINGLE POLE FOUR THROW SWITCH HAVING AN ISOLATION OF 60 dB MINIMUM AND AN INSERTION LOSS OF 2.2 dB MAXIMUM AND A VSWR OF 1.8:1.

SPECIFICATIONS

- FREQUENCY: 5 GHz TO 8 GHz
- INSERTION LOSS: 2.2 dB MAXIMUM
- ISOLATION: 60 dB MINIMUM
- VSWR: 1.8:1 TYPICAL
2.0:1 MAXIMUM
- SWITCHING SPEED: 50 ns MAXIMUM
- POWER INPUT: +20 dBm CW STANDARD
+10 dBm CW HIGH SPEED
- SURVIVAL POWER: 1 WATT CW
10 WATTS PEAK
(1 μ s MAXIMUM PULSE WIDTH)
- CONTROL: TTL LOGIC:
"0" = ON (LOW LOSS)
"1" = OFF (ISOLATION)
- POWER SUPPLY: +28 V @ 250 mA MAXIMUM

ENVIRONMENTAL RATINGS

- TEMPERATURE: -55 °C TO +85 °C (OPERATING)
-65 °C TO +125 °C (STORAGE)
- HUMIDITY: MIL-STD-202F, METHOD 103B COND. B
- SHOCK: MIL-STD-202F, METHOD 213B COND. B
- VIBRATION: MIL-STD-202F, METHOD 204D COND. B
- ALTITUDE: MIL-STD-202F, METHOD 105C COND. B
- TEMPERATURE CYCLE: MIL-STD-202F, METHOD 107D COND. A

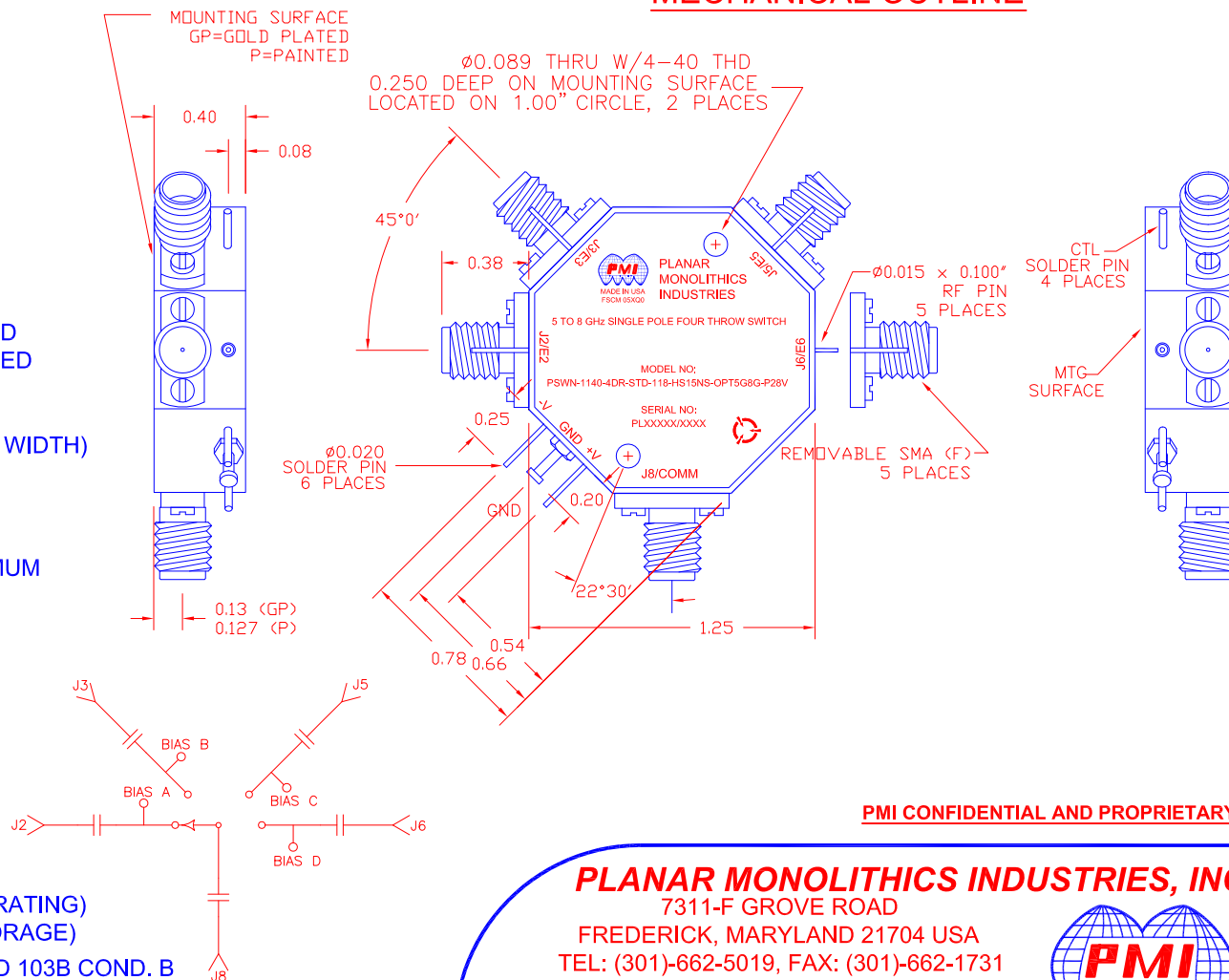
NOTE: SPECIFICATIONS WILL VARY OVER OPERATING TEMPERATURE

NOTE: THE ABOVE SPECIFICATIONS ARE SUBJECT TO CHANGE OR REVISION

ALL DIMENSIONS ARE IN INCHES
TOLERANCES:
X.XX ± 0.020
X.XXX ± 0.010

REVISIONS				
ZONE	REV.	DESCRIPTION	DATE	APPROVED
	-	PRELIMINARY	04/21/15	KM

MECHANICAL OUTLINE



PMI CONFIDENTIAL AND PROPRIETARY

PLANAR MONOLITHICS INDUSTRIES, INC.

7311-F GROVE ROAD

FREDERICK, MARYLAND 21704 USA

TEL: (301)-662-5019, FAX: (301)-662-1731

WEB: www.pmi-rf.com, EMAIL: sales@pmi-rf.com

ISO 9001 CERTIFIED



APPROVALS		DATE	TITLE			
DRAWN		04/21/15	PRODUCT FEATURE			
CHECKED			PSWN-1140-4DR-STD-118-HS15NS-OPT5G8G-P28V			
ISSUED			SIZE	FSCM NO.	DWG NO.	REV.
			A	05XQ0	PRELIMINARY	-
			SCALE	N:S	SHEET	1 OF 1