

DESCRIPTION:

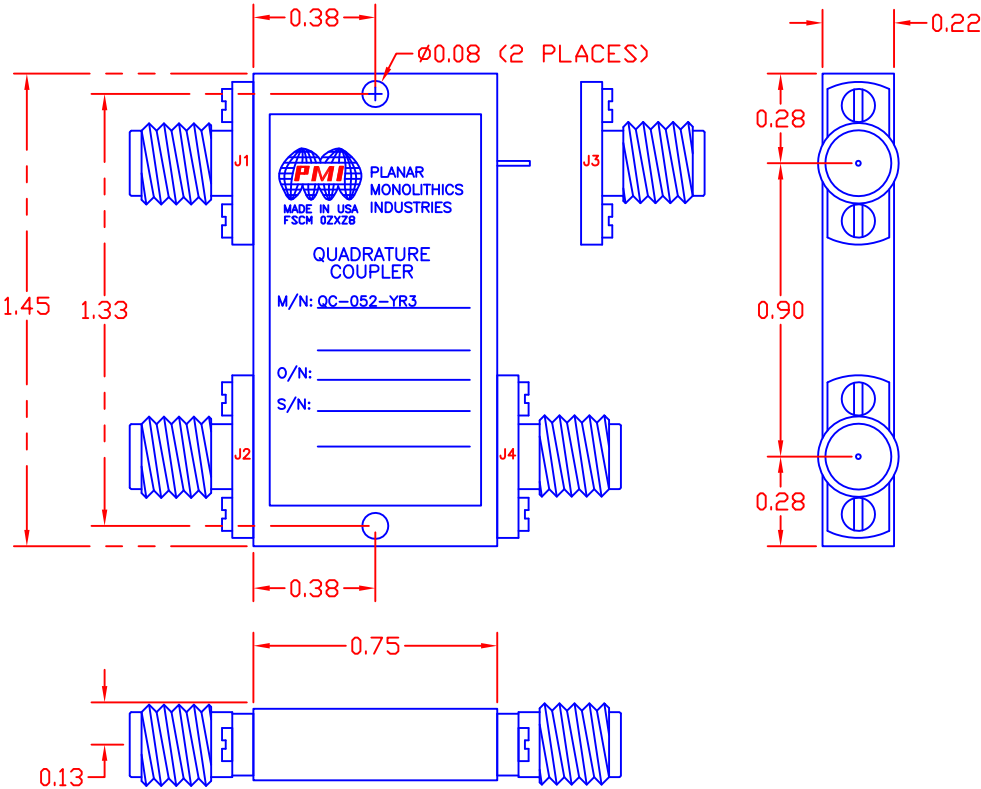
PMI'S QC-052-YR3 IS A 3dB, 90 DEGREE QUADRATURE COUPLER THAT WHEN A SIGNAL IS APPLIED TO ANY PORT WILL SPLIT EQUALLY BETWEEN THE PORTS ON THE OTHER SIDE WITH THE ADJACENT PORT REMAINING ISOLATED. THE PHASE RELATIONSHIP IS 0° TO THE PORT DIRECTLY OPPOSITE AND -90° TO THE PORT ON THE DIAGONAL.

REVISIONS				
ZONE	REV.	DESCRIPTION	DATE	APPROVED
	-	ORIGINAL RELEASE	6/5/03	

M/N = MANUFACTURER PART NUMBER
O/N = OPTION NUMBER
S/N = SERIAL NUMBER

SPECIFICATIONS:

- FREQUENCY RANGE:0.5 TO 2.0 GHz
- RF INPUT POWER HANDLING:10 WATT CW
- AMPLITUDE BALANCE:±2.5 dB MAXIMUM
- PHASE BALANCE:90° ±2.5° MAXIMUM
- ISOLATION:18 dB MINIMUM
- VSWR (ALL PORTS):1.5:1 MAXIMUM
- WEIGHT:1.0 OUNCE TYPICAL
- SIZE:1.45" X 0.75" X 0.22"




PATH TABLE				
	J1	J2	J3	J4
J1	INPUT	-3dB/-90°	-3dB/0°	ISOLATED
J2	-3dB/-90°	INPUT	ISOLATED	-3dB/0°
J3	-3dB/0°	ISOLATED	INPUT	-3dB/-90°
J4	ISOLATED	-3dB/0°	-3dB/-90°	INPUT

CONFIDENTIAL AND PROPRIETARY

ENVIRONMENTAL RATINGS:

- TEMPERATURE:-55°C TO +85°C (OPERATING)
.....-65°C TO +125°C (STORAGE)
 - HUMIDITY:MIL-STD-202F, METHOD 103B COND. B
 - SHOCK:MIL-STD-202F, METHOD 213B COND. B
 - VIBRATION:MIL-STD-202F, METHOD 204D COND. B
 - ALTITUDE:MIL-STD-202F, METHOD 105C COND. B
 - TEMPERATURE CYCLE:MIL-STD-202F, METHOD 107D COND. A
- NOTE: SPECIFICATIONS WILL VARY OVER OPERATING TEMPERATURE
NOTE: THE ABOVE SPECIFICATIONS ARE SUBJECT TO CHANGE OR REVISION

ALL DIMENSIONS ARE IN INCHES
TOLERANCES:
X.XX ±0.010
X.XXX ±0.005

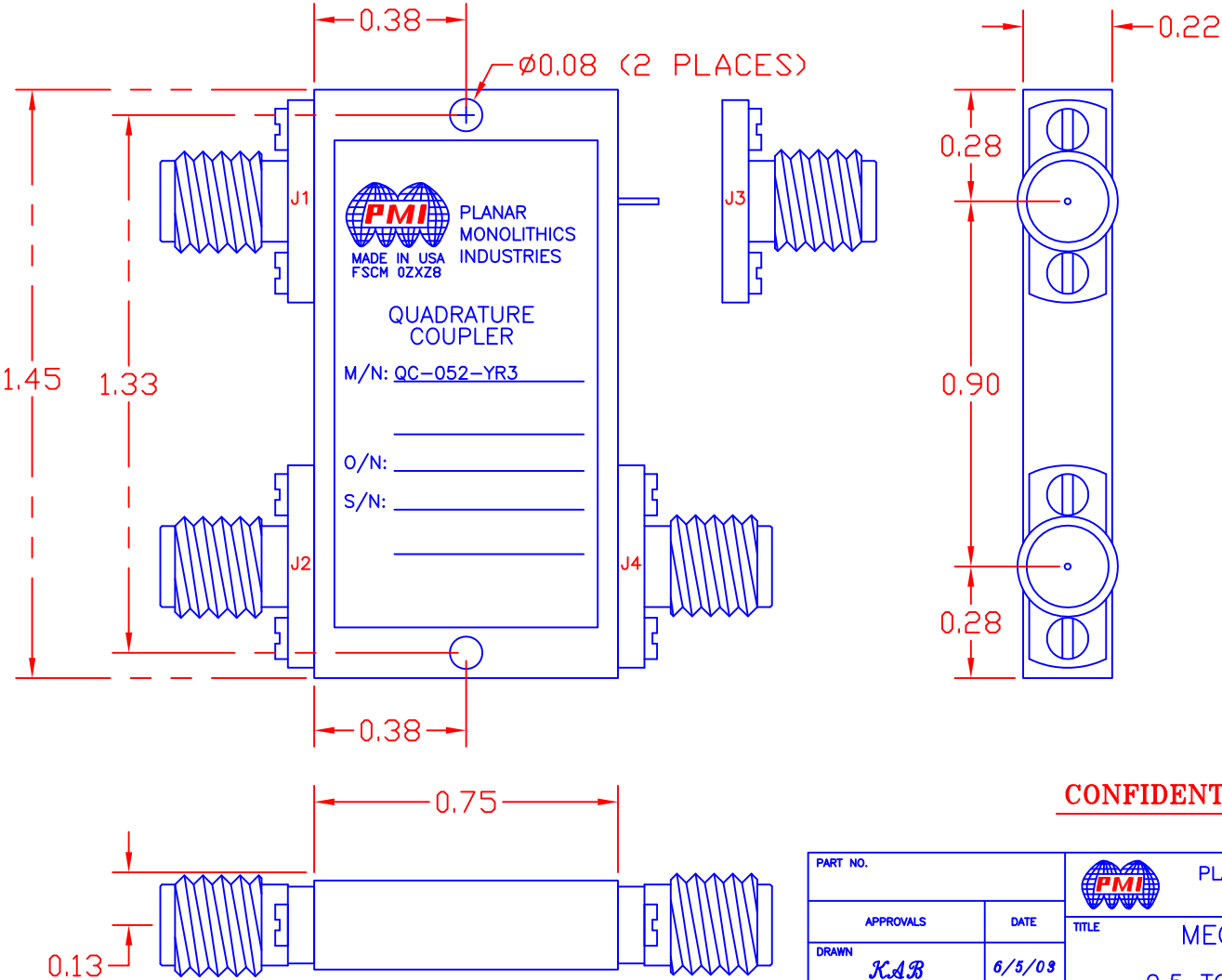
PART NO.		 PLANAR MONOLITHICS INDUSTRIES FREDERICK, MARYLAND	
APPROVALS	DATE	TITLE	
DRAWN <i>KAB</i>	6/5/03	PRODUCT FEATURE	
REDRAWN <i>JDJ</i>	8/10/04	QC-052-YR3	
ISSUED		0.5 TO 2.0 GHz MINIATURE QUADRATURE COUPLER	
SIZE	FSCM NO.	DWG NO.	REV.
A	OZXZ8	100-4510-2	-
SCALE N:S		SHEET 1 of 3	

DESCRIPTION:

PMI'S QC-052-YR3 IS A 3dB, 90 DEGREE QUADRATURE COUPLER THAT WHEN A SIGNAL IS APPLIED TO ANY PORT WILL SPLIT EQUALLY BETWEEN THE PORTS ON THE OTHER SIDE WITH THE ADJACENT PORT REMAINING ISOLATED. THE PHASE RELATIONSHIP IS 0° TO THE PORT DIRECTLY OPPOSITE AND -90° TO THE PORT ON THE DIAGONAL.


REVISIONS				
ZONE	REV.	DESCRIPTION	DATE	APPROVED
	-	ORIGINAL RELEASE	6/5/03	

M/N = MANUFACTURER PART NUMBER
O/N = OPTION NUMBER
S/N = SERIAL NUMBER



CONFIDENTIAL AND PROPRIETARY

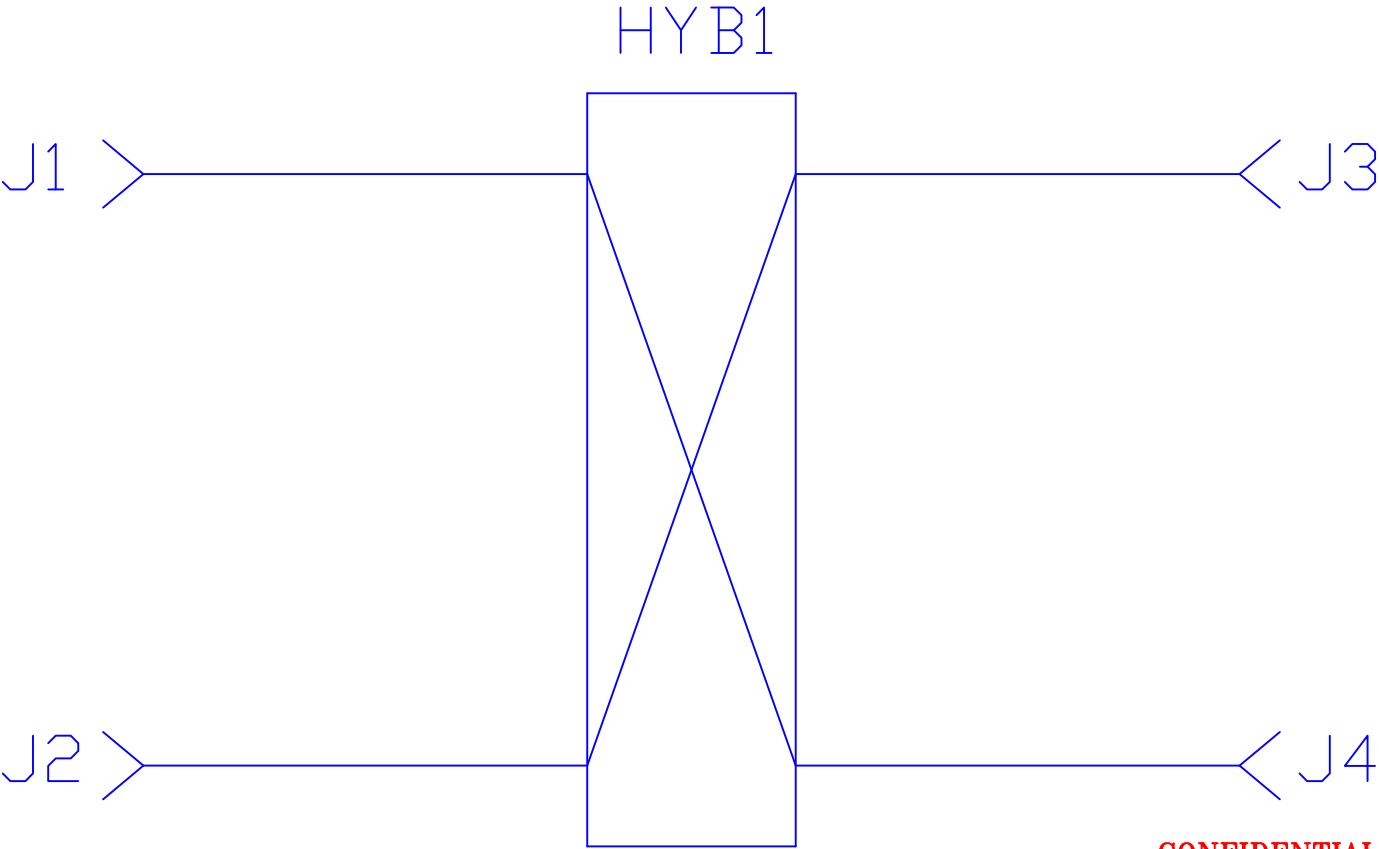
ALL DIMENSIONS ARE IN INCHES
TOLERANCES:
X.XX ±0.010
X.XXX ±0.005

PART NO.		 PLANAR MONOLITHICS INDUSTRIES FREDERICK, MARYLAND		
APPROVALS		DATE	TITLE	
DRAWN <i>KAB</i>		6/5/03	MECHANICAL OUTLINE	
REDRAWN <i>JDJ</i>		8/10/04	QC-052-YR3	
ISSUED			0.5 TO 2.0 GHz MINIATURE QUADRATURE COUPLER	
SIZE	FSCM NO.	DWG NO.	REV.	
A	0ZXZ8	100-4510-2	-	
SCALE N:S			SHEET 2 of 3	

DESCRIPTION:


PMI'S QC-052-YR3 IS A 3dB, 90 DEGREE QUADRATURE COUPLER THAT WHEN A SIGNAL IS APPLIED TO ANY PORT WILL SPLIT EQUALLY BETWEEN THE PORTS ON THE OTHER SIDE WITH THE ADJACENT PORT REMAINING ISOLATED. THE PHASE RELATIONSHIP IS 0° TO THE PORT DIRECTLY OPPOSITE AND -90° TO THE PORT ON THE DIAGONAL.

REVISIONS				
ZONE	REV.	DESCRIPTION		DATE
	-	ORIGINAL RELEASE		6/5/03



CONFIDENTIAL AND PROPRIETARY

PATH TABLE				
	J1	J2	J3	J4
J1	INPUT	-3dB/-90°	-3dB/0°	ISOLATED
J2	-3dB/-90°	INPUT	ISOLATED	-3dB/0°
J3	-3dB/0°	ISOLATED	INPUT	-3dB/-90°
J4	ISOLATED	-3dB/0°	-3dB/-90°	INPUT

PART NO.		 PLANAR MONOLITHICS INDUSTRIES FREDERICK, MARYLAND		
APPROVALS		DATE	TITLE SCHEMATIC QC-052-YR3 0.5 TO 2.0 GHz MINIATURE QUADRATURE COUPLER	
DRAWN		6/5/03		
REDRAWN		8/10/04		
ISSUED				
		SIZE	FSCM NO.	DWG NO.
		A	0ZXZ8	100-4510-2
		SCALE N:S		REV. -
				SHEET 3 of 3