

DESCRIPTION:

PMI MODEL NUMBER: PTH-DC22G-292FF IS AN RF FEED-THRU HERMETICALLY SEALED PACKAGE WITH WORKING FREQUENCY RANGE OF DC TO 22GHZ. THIS FEED-THRU IS SUPPLIED IN A HOUSING THAT CAN BE USED AS A SURFACE MOUNT OR CONNECTORIZED COMPONENT.

SPECIFICATIONS:

Frequency Range:	DC to 22 GHz
Insertion Loss:	1 dB Max
VSWR Input/Output:	1.5:1 Max.
Connectors In/Out:	2.92mm Female
Finish:	Gold Plated
Package:	Hermetically Sealed (1×10^{-8} ccm/s)

ENVIRONMENTAL RATINGS:

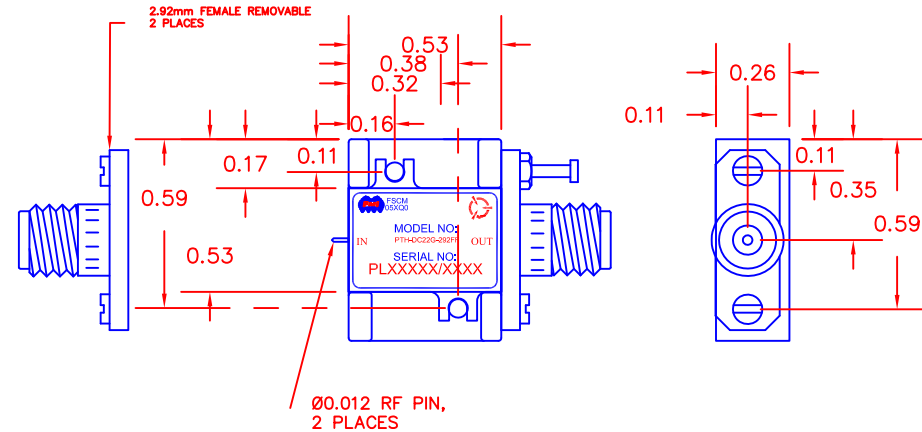
Temperature:	-50°C to +95°C (Operating)
	-60°C to +120°C (Storage)
Humidity:	MIL-STD-202F, METHOD 103B COND B.
Shock:	MIL-STD-202F, METHOD 213B COND B.
Altitude:	MIL-STD-202F, METHOD 105C COND B.
Temperature Cycle:	MIL-STD-202F, METHOD 107D COND A

Note: The above specifications are subject to change or revision.
Specifications will vary over operating temperature.

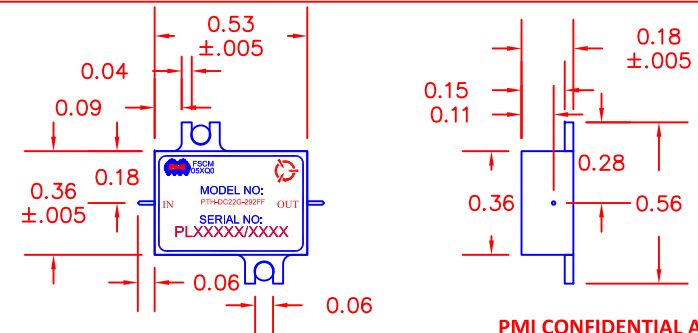
ALL DIMENSIONS ARE IN INCHES
TOLERANCES:
X.XX ±0.020
X.XXX ±0.010

REVISIONS				
ZONE	REV.	DESCRIPTION	DATE	APPROVED
	-	PRELIMINARY	7/6/2021	

HOUSING WITH CARRIER



HOUSING WITHOUT CARRIER (SURFACE MOUNT)



PMI CONFIDENTIAL AND PROPRIETARY

PLANAR MONOLITHICS INDUSTRIES, INC.

7311-F GROVE ROAD
FREDERICK, MARYLAND 21704 USA
TEL: 301-662-5019 FAX: 301-662-1731
WEBSITE: www.pmi-rf.com
E-MAIL: sales@pmi-rf.com
ISO 9001 CERTIFIED



APPROVALS		DATE	TITLE		
DRAWN		7/6/2021	PRODUCT FEATURE PTH-DC22G-292FF		
REDRAWN	SPH	SIZE A	FSCM NO.	DWG NO	PRELIMINARY
ISSUED		SCALE N:S			SHEET 1 OF 1