

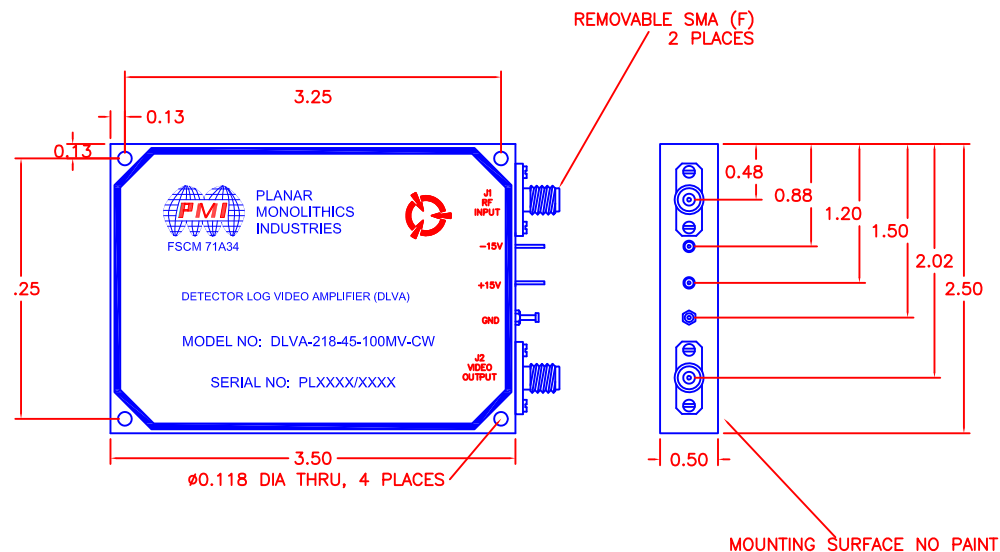
**DESCRIPTION:**

PMI MODEL NO. DLVA-218-45-100MV-CW IS A CW IMMUNE DLVA (DETECTOR LOG VIDEO AMPLIFIER), THIS UNIT OPERATES FROM 2.0 TO 18.0 GHz. IT HAS THE ABILITY TO INTERFACE WITH A LONG CABLE (65 FT), WHILE MAINTAINING HIGH SPEED AND FLATNESS.

REVISIONS				
ZONE	REV.	DESCRIPTION	DATE	APPROVED
	1	PRELIMINARY	9-22-17	

**SPECIFICATIONS:**

- FREQUENCY: 2.0 GHz TO 18.0 GHz
- FREQUENCY FLATNESS: ±2.0dB TYP
- SIGNAL CAPABILITY: PULSE (100ns – 300µs)
- TSS FROM -20°C TO +85°C: -45dBm TYPICAL
- LOG DYNAMIC RANGE: -40dBm TO +5dBm
- LOG SLOPE: 100mV/dB NOMINAL
- LOG LINEARITY: ±1.5dB MAX
- DC OFFSET: ±150mV TYP
- OUTPUT RISE TIME: 25ns MAX
- SETTLING TIME: 55ns MAX, 90% OUTPUT TO ±0.5dB OF FINAL VALUE
- RECOVERY TIME: 500ns MAX
- INPUT VSWR: 2.5:1 TYP
- MAX INPUT LEVEL: +20dBm CW
- VIDEO OUTPUT DRIVE: THROUGH 65 Feet, RG180 CABLE, INTO 93Ω LOAD
- POWER SUPPLY: +15VDC @ 150mA MAX  
-15VDC @ 150mA MAX
- SIZE: (L) 3.5" X (W) 2.5" X (H) 0.5"  
(L) 88.9mm X (W) 63.5mm X (H) 12.7mm
- FINISH: MIL-SPEC EPOXY PAINT – BLUE  
MOUNTING SURFACE FREE OF PAINT
- COOLING: CONDUCTION COOLING AT MOUNTING SURFACE



PMI CONFIDENTIAL AND PROPRIETARY

**ENVIRONMENTAL RATINGS:**

- TEMPERATURE: -20°C TO +85°C (OPERATING)  
-65°C TO +125°C (STORAGE)
  - HUMIDITY: MIL-STD-202F, METHOD 103B COND. B
  - SHOCK: MIL-STD-202F, METHOD 213B COND. B
  - VIBRATION: MIL-STD-202F, METHOD 204D COND. B
  - ALTITUDE: MIL-STD-202F, METHOD 105C COND. B
  - TEMPERATURE CYCLE: MIL-STD-202F, METHOD 107 COND. A
- NOTE: THE ABOVE SPECIFICATIONS ARE SUBJECT TO CHANGE OR REVISION

ALL DIMENSIONS ARE IN INCHES  
TOLERANCES:  
X.XX ±0.010  
X.XXX ±0.005

**PLANAR MONOLITHICS INDUSTRIES, INC.**

4921 ROBERT J. MATHEWS PKWY #1  
EL DORADO HILLS, CA 95762 USA  
TEL: 916-542-1401 FAX: 916-265-2597  
WEBSITE: [www.pmi-rf.com](http://www.pmi-rf.com)  
E-MAIL: [sales@pmi-rf.com](mailto:sales@pmi-rf.com)  
ISO 9001 CERTIFIED



APPROVALS		DATE	TITLE		
DRAWN <i>gohm</i>		9-22-17	PRODUCT FEATURE DLVA-218-45-100MV-CW		
CHECKED			SIZE A	FSCM NO. 71A34	DWG NO. PRELIMINARY
ISSUED			SCALE N:S	SHEET 1 OF 1	