

DESCRIPTION

PMI MODEL NUMBER PS-360-8G10G-8-SFF-LVT-15D IS AN 8.0 TO 10.0 GHz 8 BIT DIGITALLY CONTROLLED PHASE SHIFTER WITH CAPABILITY FOR PHASE SHIFTING FROM 0° TO 360°, WITH RESOLUTION AS FINE AS 1.41°.

SPECIFICATIONS

- FREQUENCY RANGE: 8.0 TO 10.0 GHz
- INPUT POWER: (OPERATING): 13dBm Max
- INPUT POWER (SURVIVAL): 30dBm MAX.
- INSERTION LOSS 10dB TYP, 12dB MAX
- PHASE CONTROL RANGE: 360° Min
- PHASE CONTROL BITS POSITIVE BINARY 8 BIT LVTTL
- PHASE LSB STEP 1.41°
- PASSBAND PHASE ACCURACY: ±9° TYP, ±12° MAX
- PHASE FLATNESS ±12° MAX (OVER ANY 1 GHz IN THE PASSBAND)
- PM/AM ±2 dB MAX
- SPURIOUS SIGNALS -130 dBm MAX (NO RF INPUT OR CONTROL UPDATES)
- SWITCHING SPEED 500 ns MAX. (DIGITAL DELAY + RF ENVELOPE RISE/FALL TIME)
- VSWR: (IN/OUT) 2.0:1 MAX.
- CONNECTORS (RF) SMA FEMALE
- CONNECTOR (CONTROL) 15 PIN MALE MICRO D CONNECTOR
MATING CONNECTOR SHIPPED WITH UNIT
- POWER SUPPLY +15VDC @ 250mA MAX ±5%.
-15VDC @ 20mA MAX ±5%.
- SIZE: (L) 1.60" X (W) 1.75" X (H) 0.50"
*EXCLUDING MOUNTING HOLES + CONNECTOR
- FINISH: PAINTED BLUE

CONTROL (J3) SELECT & DC POWER INPUTS

- SIGNAL TYPE: LVTTL POSITIVE BINARY LOGIC PHASE SHIFT CONTROL
 - BIT SELECTED: LVTTL HIGH
 - BIT NOT SELECTED: LVTTL LOW
- * INPUTS SHALL NOT PRESENT A VOLTAGE OUTSIDE THE RANGE OF 0V TO +3.3V AT ANY TIME

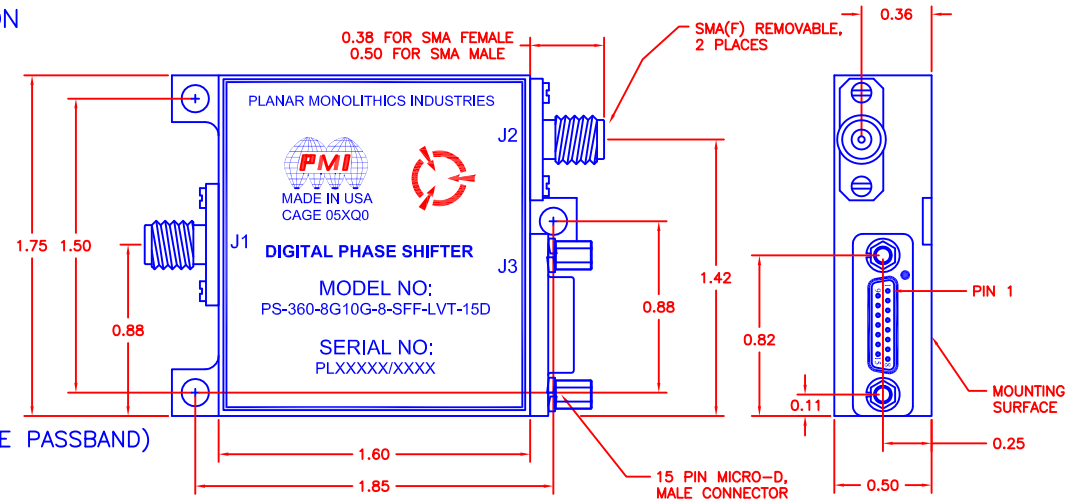
ENVIRONMENTAL RATINGS

- TEMPERATURE: 0°C TO +85°C (OPERATING)
-20°C TO +85°C (STORAGE)
- SHOCK: MIL-STD-202F, METHOD 213B COND. B
- VIBRATION: MIL-STD-202F, METHOD 204D COND. B
- ALTITUDE: MIL-STD-202F, METHOD 105C COND. B
- TEMPERATURE CYCLE: MIL-STD-202F, METHOD 107D COND. A

NOTE: SPECIFICATIONS WILL VARY OVER OPERATING TEMPERATURE
NOTE: THE ABOVE SPECIFICATIONS ARE SUBJECT TO CHANGE OR REVISION

ALL DIMENSIONS ARE IN INCHES
TOLERANCES:
X.XX ±0.020
X.XXX ±0.010

ZONE		REV.	DESCRIPTION	DATE	APPROVED
		-	PRELIMINARY	1/30/19	



CONNECTOR TABLE

PIN	FUNCTION	PIN	FUNCTION
1	GROUND	9	90°
2	+5V	10	180° (MSB)
3	-12V TO -15V	11	N/C
4	1.4° (LSB)	12	45°
5	2.8°	13	GROUND
6	5.6°	14	N/C
7	22.5°	15	N/C
8	11.3°		

PMI CONFIDENTIAL AND PROPRIETARY

PLANAR MONOLITHICS INDUSTRIES, INC.

7311-F GROVE ROAD
FREDERICK, MARYLAND 21704 USA
TEL: 301-662-5019 FAX: 301-662-1731
WEBSITE: www.pmi-rf.com
E-MAIL: sales@pmi-rf.com
ISO 9001 CERTIFIED



APPROVALS		DATE	TITLE		
DRAWN	<i>sfk</i>	1/12/15	PRODUCT FEATURE		
REDRAWN	<i>BW</i>	1/30/19	PS-360-8G10G-8-SFF-LVT-15D		
ISSUED			8.0 to 10.0 GHz, PHASE SHIFTER		
			SIZE	FSCM NO.	DWG NO.
			A	05XQ0	PRELIMINARY
			SCALE	SHEET	
			N:S	1 OF 1	