

Description:

Low Noise Amplifier designed for Military and Industrial applications. This amplifier is supplied in our standard PE2 housing that can be used as a SMA connectorized or a surface mount component. Other packages and connector types are available.

This model provides the following performance. Data is available upon request.

Specifications:

Frequency Range: 0.5 to 4.0 GHz
Gain: 45dB Typ.
Gain Flatness: +/-1.0dB Max.
Noise Figure: 5.0dB Typ.
OP1dB: 20dBm Min.
VSWR Input/Output: 2.0:1 Max.
DC Voltage Supply: +12 to +15VDC
DC Current Draw: 385mA Max.

Features:

Internal Voltage Regulation
Unconditional Stability
Standard Operating Temperature -20 to +70 Deg. C

Available Options:

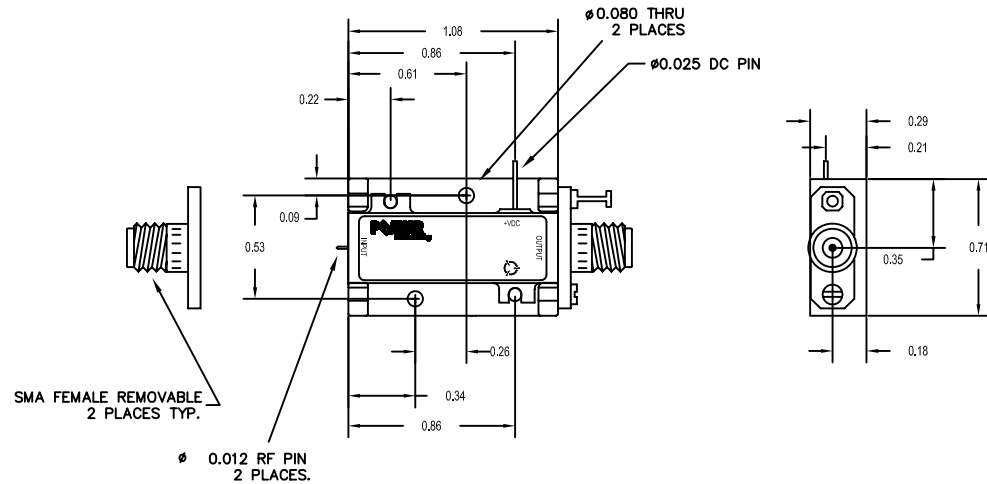
Various Package types
Various Connector types
Temperature Compensation
Hermetic Sealing
Gain and Phase Matching
MIL-STD-883 Screening Available

Environmental Ratings:

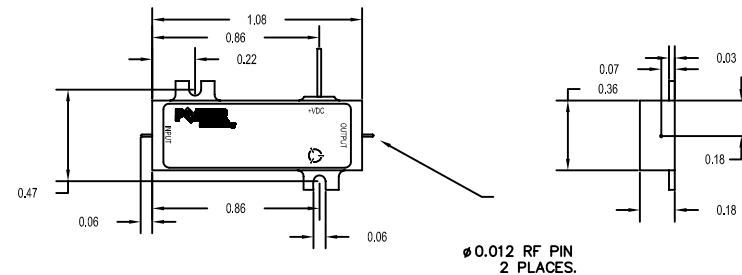
Temperature: -20 to +70 Deg. C (Operating) ; -55 to +85 Deg C Available)
-55 to +125 Deg. C (Storage)
Humidity: MIL-STD-202F, METHOD 103B COND B.
Shock: MIL-STD-202F, METHOD 213B COND B.
Altitude: MIL-STD-202F, METHOD 105C COND B.
Temperature Cycle: MIL-STD-202F, METHOD 107D COND A

Note: The above specifications are subject to change or revision.

PE2 HOUSING WITH CARRIER



PE2 HOUSING WITHOUT CARRIER (SURFACE MOUNT)



UNLESS OTHERWISE SPECIFIED
DIMENSIONS ARE IN INCHES
TOLERANCES ARE:
FRACTIONS DECIMALS ANGLES
± .XX ± 0.010 ±
± .XXX ± 0.005 ±

| PART NO. | | REVISIONS | | DATE | | APPROVED | |
|----------|------|------------------|--------|----------|------|----------|----------|
| ZONE | REV. | DESCRIPTION | DATE | APPROVED | DATE | APPROVED | APPROVED |
| - | - | ORIGINAL RELEASE | 2/1/08 | | | | |

| | | | | | | | |
|-----------------------------------|--|------------------|--|-----------------|--|---|--|
| MATERIAL: 6061-T6 Aluminum | | DRAWN K Mason | | DATE 2/21/08 | | TITLE PRODUCT FEATURE | |
| FINISH: Gold Plate over Nickel | | CHECKED | | DATE | | PART NO. PE2-45-0R54R0-5R0-22-12-SFF | |
| DO NOT SCALE DRAWING | | REVISIONS | | DATE | | APPROVED | |
| | | B 1LK53 | | WEB - MODEL | | A | |
| | | SCALE N/A | | SHEET 1 OF 1 | | | |