

DESCRIPTION:

PLANAR MONOLITHICS INDUSTRIES MODEL NUMBER P2T-500M20G-50-R-SFF-MICROD IS A REFLECTIVE SINGLE POLE, TWO THROW SWITCH THAT OPERATES FROM 500 MHz TO 20.0 GHz WHICH HANDLES +23 dBm CW INPUT POWER. THE PORT TO PORT ISOLATION IS 50 dB MINIMUM. THIS MODEL HAS LOW INSERTION LOSS WHILE STILL OFFERING A FAST SWITCHING SPEED OF 50 ns MAXIMUM.

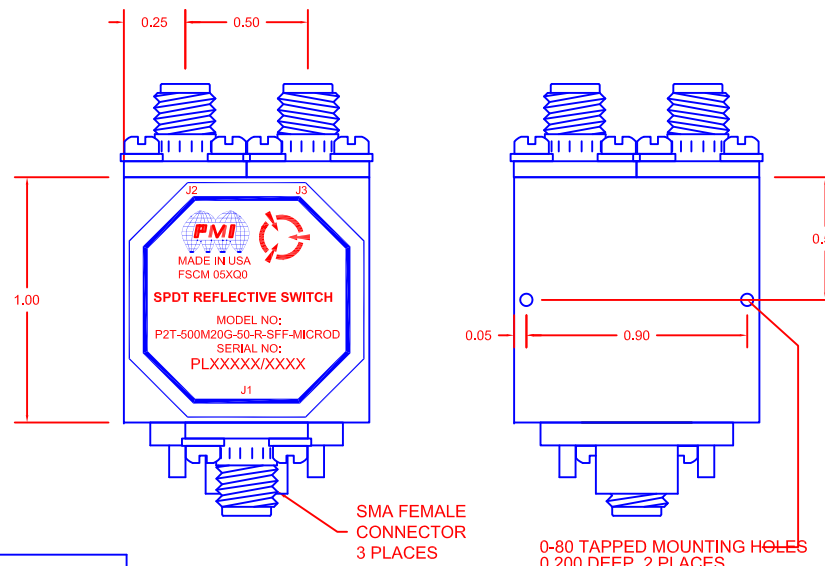
SPECIFICATIONS:

- FREQUENCY: _____ 500 MHz TO 20.0 GHz
- INSERTION LOSS: _____ 2.8 dB MAXIMUM
- INPUT POWER: _____ +23 dBm CW MAXIMUM
- VSWR: _____ 1.9:1 MAXIMUM
- ISOLATION: _____ 50 dB MINIMUM
- SWITCHING SPEED: _____ 50 ns MAXIMUM
- CONTROL: _____ TTL LOGIC "0" = J1 TO J2
TTL LOGIC "1" = J1 TO J3
- DC VOLTAGE: _____ 80 mA @ +5 VDC TYPICAL
80 mA @ -12 VDC TYPICAL
- CONNECTORS: _____ SMA FEMALE
- POWER AND CONTROL: _____ 9 PIN MICRO-D FEMALE
- SIZE: _____ 1.00 X 1.00 X .500 (H)
- WEIGHT: _____ 1.5 OZ. TYPICAL
- FINISH: _____ BLUE EPOXY POLIMIDE COATING IAW MIL-C-22750, TYPE I OVER EPOXY POLIMIDE PRIMER IAW MIL-P-23377, TYPE I, CLASS 1 OR 3.

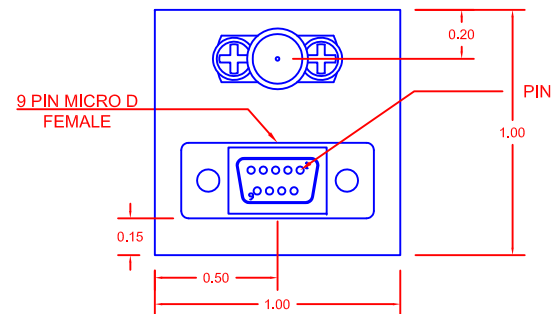
ENVIRONMENTAL RATINGS:

- TEMPERATURE: _____ -45°C TO +90°C (OPERATING)
-54°C TO +125°C (STORAGE)
- HUMIDITY: _____ MIL-STD-202F, METHOD 103B COND. B
- SHOCK: _____ MIL-STD-202F, METHOD 213B COND. C
- VIBRATION: _____ MIL-STD-202F, METHOD 204D COND. B
- SALT FOG: _____ MIL-STD-202F, METHOD 101D-EST COND. B
- THERMAL SHOCK: _____ MIL-STD-202F, METHOD 107D COND. A
- FUNGUS: _____ MIL-STD-810F, METHOD 508.5
- EMI / EMC: _____ MIL-STD-461E

REVISIONS				
ZONE	REV.	DESCRIPTION	DATE	APPROVED
	-	PRELIMINARY	01/29/18	



Pin No.	Function
1	CTL
2	NC
3	NC
4	NC
5	NC
6	NC
7	+V
8	-V
9	GND



PMI CONFIDENTIAL AND PROPRIETARY

PLANAR MONOLITHICS INDUSTRIES, INC.
 7311-F GROVE ROAD
 FREDERICK, MARYLAND 21704 USA
 TEL: 301-662-5019 FAX: 301-662-1731
 WEBSITE: www.pmi-rf.com
 E-MAIL: sales@pmi-rf.com
 ISO 9001 CERTIFIED

NOTE: Environmental testing and ESS will be met, but actual testing is not done by PMI. Actual screening is available for an additional charge.
 NOTE: THE ABOVE SPECIFICATIONS ARE SUBJECT TO CHANGE OR REVISION

ALL DIMENSIONS ARE IN INCHES
 TOLERANCES:
 X.XX ±0.020
 X.XXX ±0.010

APPROVALS		DATE	TITLE		
DRAWN <i>fk</i>		1/29/18	PRODUCT FEATURE		
REDRAWN <i>EMF</i>		4/28/18	P2T-500M20G-50-R-SFF-MICROD		
ISSUED			SP2T SWITCH		
SIZE	FSCM NO.	DWG NO.	REV.		
A	05XQ0	PRELIMINARY	-		
SCALE N:S		SHEET		1 OF 1	