

DESCRIPTION

PMI MODEL PEC-7R720R3-15-SFF-SA IS A SWITCHED ATTENUATOR WITH THE FOLLWING SPECIFICATIONS.

SPECIFICATIONS

- FREQUENCY RANGE: 7.7 TO 20.3 GHz
- INSERTION LOSS: 4.0 dB MAX IN 0dB STATE
- PASSBAND FLATNESS: 1.5 dB PK-PK
- ATTENUATION STATES: 0dB
2 ± 0.5 dB
4 ± 0.5 dB
- NOISE FIGURE: 4 dB MAX IN 0dB STATE
4 dB + ATTENUATION IN OTHER STATES
- INPUT IP3: +28 dBm MIN
TONES OF -15 dBm
SPACED 4 MHz APART
- INPUT IP2: +35 dBm
- INPUT 1dB COMPRESSION: +19 dBm
- VSWR IN\OUT (50Ω) ≤ 1.7:1 MAX
- CONTROL LOGIC: TTL COMPATIBLE TRUTH TABLE
- CONNECTORS: SMA (F) REMOVABLE
- DC SUPPLY 15VDC ± 0.5 @ ≤ 100mA
- FINISH GOLD PLATED
- SIZE (L) 1.50" X (W) 0.75" X (H) 0.50"

| TTL COMPATIBLE TRUTH TABLE | | |
|----------------------------|-------|-------|
| CTL 1 | CTL 2 | STATE |
| 0 | 0 | 0 dB |
| 1 | 0 | 2 dB |
| 0 | 1 | 4 dB |
| 1 | 1 | N/A |

ENVIRONMENTAL RATINGS

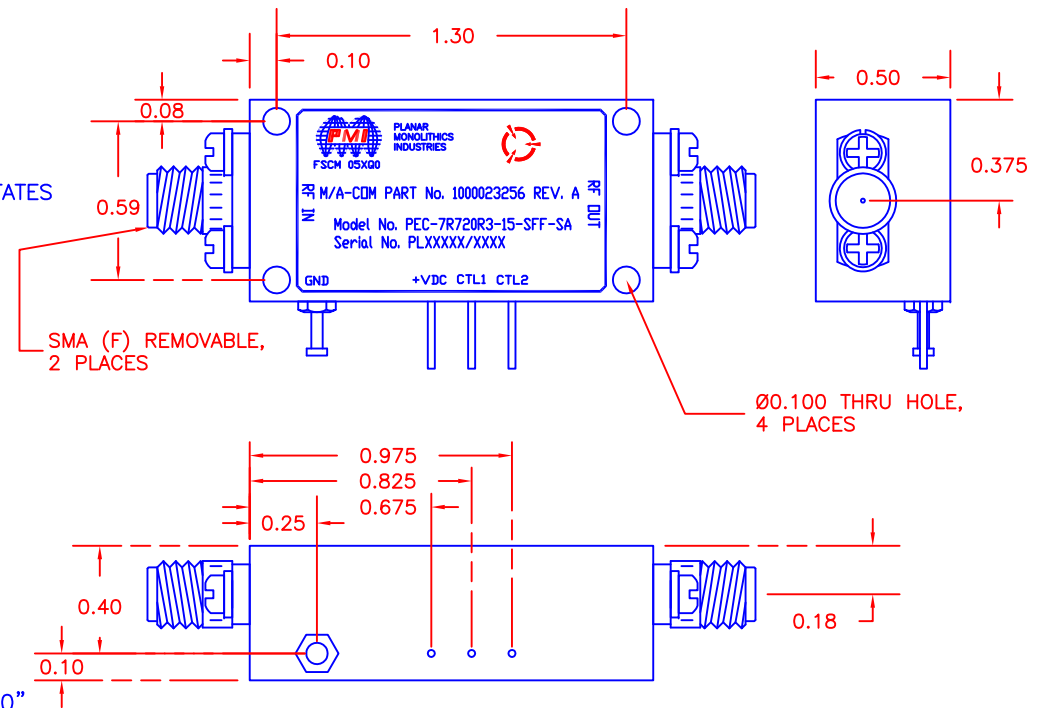
- **TEMPERATURE:** -40°C TO +85°C (OPERATING)
-55°C TO +125°C (STORAGE)
- **HUMIDITY:** MIL-STD-202F, METHOD 103B COND. B
- **SHOCK:** MIL-STD-202F, METHOD 213B COND. B
- **VIBRATION:** MIL-STD-202F, METHOD 204D COND. B
- **ALTITUDE:** MIL-STD-202F, METHOD 105C COND. B
- **TEMPERATURE CYCLE:** MIL-STD-202F, METHOD 107

NOTE: SPECIFICATIONS WILL VARY OVER OPERATING TEMPERATURE
NOTE: THE ABOVE SPECIFICATIONS ARE SUBJECT TO CHANGE OR REVISION

ALL DIMENSIONS ARE IN INCHES
TOLERANCES:
X.XX ±0.020
X.XXX ±0.010

| REVISIONS | | | | |
|-----------|------|------------------|----------|----------|
| ZONE | REV. | DESCRIPTION | DATE | APPROVED |
| | A1 | ORIGINAL RELEASE | 02/25/05 | |
| | A2 | ECN # 14-0151 | 09/10/14 | |

MECHANICAL OUTLINE



PMI CONFIDENTIAL AND PROPRIETARY

PLANAR MONOLITHICS INDUSTRIES, INC.

7311-F GROVE ROAD
FREDERICK, MARYLAND 21704 USA
TEL: 301-662-5019 FAX: 301-662-1731
WEBSITE: www.pmi-rf.com
E-MAIL: sales@pmi-rf.com
ISO 9001 CERTIFIED



| APPROVALS | | DATE | TITLE | | | |
|---------------------|--|----------|--|----------|----------|--------------|
| DRAWN <i>KM</i> | | 02/22/05 | PRODUCT FEATURE PEC-7R720R3-15-SFF-SA | | | |
| MODIFIED <i>sfk</i> | | 07/06/11 | SIZE | FSCM NO. | DWG NO. | REV. |
| ISSUED | | | A | 05XQ0 | 27004001 | A2 |
| | | | SCALE | N:S | | SHEET 1 OF 1 |