

DESCRIPTION

PMI MODEL P4T-0R5G18G-70-R-SFF IS A REFLECTIVE, HIGH SPEED, SINGLE POLE FOUR THROW SWITCH CAPABLE OF SWITCHING WITHIN 100 ns MAXIMUM. THE FREQUENCY RANGE IS 0.5 GHz TO 18.0 GHz. THIS SWITCH HAS > 70 dB ISOLATION.

SPECIFICATIONS

- FREQUENCY RANGE: _____ 0.5 GHz TO 18.0 GHz
- IMPEDANCE: _____ 50 Ω
- INPUT POWER: _____ +30dBm MAX (SURVIVAL)
+20dBm MAX (OPERATING)
- VSWR: _____ 2.0:1 MAX
- INSERTION LOSS: _____ 3.0dB MAX
- ISOLATION: _____ 70dB MIN
- SWITCHING SPEED: _____ 100ns MAX
- DC VOLTAGE: _____ +5VDC, 200mA TYP.
-15VDC, 75mA TYP.
- CONTROL: _____ SOLDER PIN
TTL Logic "0" = Low Loss
TTL Logic "1" = Isolation
E1 Controls J1 - J2
E2 Controls J1 - J3
E3 Controls J1 - J4
E4 Controls J1 - J5
- CONNECTORS IN/OUT: _____ SMA (F)
- SIZE: _____ (L) 1.25" X (W) 1.25" X (H) 0.4"
- FINISH: _____ PAINTED BLUE

ENVIRONMENTAL RATINGS

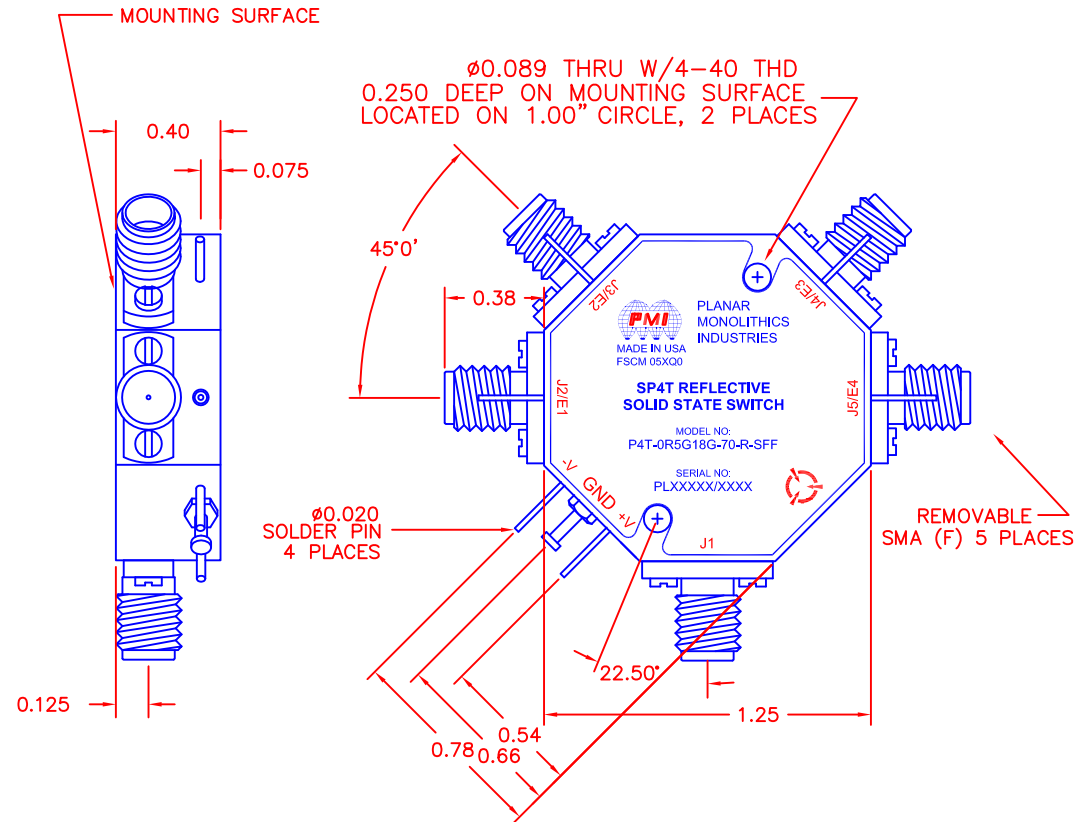
- TEMPERATURE: _____ -55°C TO + 85°C (OPERATING)
-65°C TO +125°C (STORAGE)
- HUMIDITY: _____ MIL-STD-202F, METHOD 103B COND. B
- SHOCK: _____ MIL-STD-202F, METHOD 213B COND. B
- VIBRATION: _____ MIL-STD-202F, METHOD 204D COND. B
- ALTITUDE: _____ MIL-STD-202F, METHOD 105C COND. B
- TEMPERATURE CYCLE: _____ MIL-STD-202F, METHOD 107D COND. A

NOTE: SPECIFICATIONS WILL VARY OVER OPERATING TEMPERATURE
NOTE: THE ABOVE SPECIFICATIONS ARE SUBJECT TO CHANGE OR REVISION

ALL DIMENSIONS ARE IN INCHES
TOLERANCES:
X.XX ±0.020
X.XXX ±0.010

| REVISIONS | | | | |
|-----------|------|-------------|---------|----------|
| ZONE | REV. | DESCRIPTION | DATE | APPROVED |
| | - | PRELIMINARY | 4/18/18 | |
| | | | | |

MECHANICAL OUTLINE



PMI CONFIDENTIAL AND PROPRIETARY

PLANAR MONOLITHICS INDUSTRIES, INC.

7311-F GROVE ROAD
FREDERICK, MARYLAND 21704 USA
TEL: 301-662-5019 FAX: 301-662-1731
WEBSITE: www.pmi-rf.com
E-MAIL: sales@pmi-rf.com
ISO 9001 CERTIFIED



| APPROVALS | | DATE | TITLE | | |
|------------------------|------|----------|----------------------|------|--|
| DRAWN <i>B. Thomas</i> | | 11/11/15 | PRODUCT FEATURE | | |
| REDRAWN <i>EW</i> | | 4/18/18 | P4T-0R5G18G-70-R-SFF | | |
| ISSUED | SIZE | FSCM NO. | DWG NO. | REV. | |
| | A | 05XQ0 | PRELIMINARY | - | |
| SCALE N:S | | | SHEET 1 OF 1 | | |