

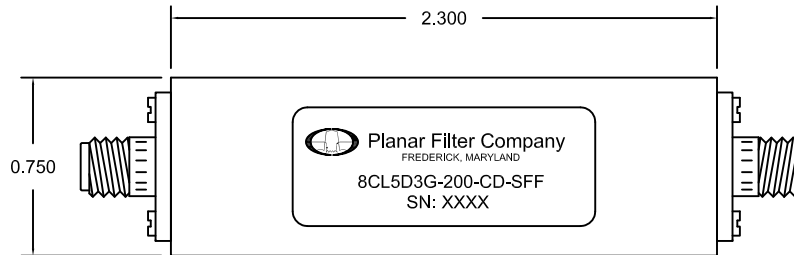
DESCRIPTION:

PFC model number 8CL5D3G-200-CD-SFF is a Combine Bandpass filter with SMA female connectors in and out. All filters will be machined and silver plated to provide the highest possible Q.

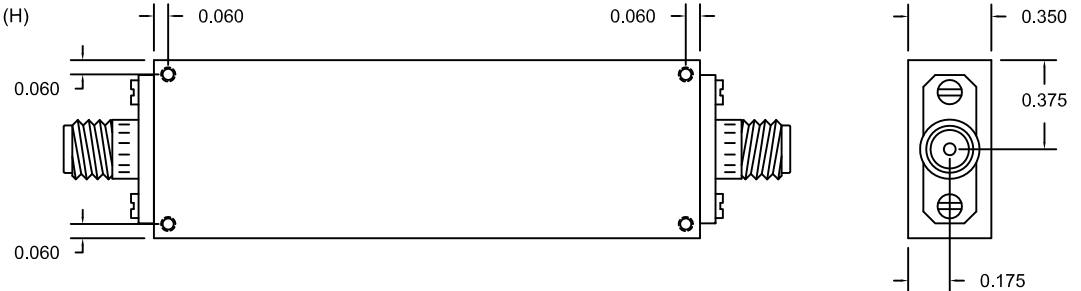
REVISIONS				
ZONE	REV.	DESCRIPTION	DATE	APPROVED
	-	ORIGINAL RELEASE	9/11/01	

SPECIFICATIONS:

- CENTER FREQUENCY: 5300 MHz
- 1dB BANDWIDTH: 200 MHz
- VSWR IN THE PASS BAND: 1.5:1 MAX.
- INSERTION LOSS (PASSBAND) ≤ 7 dB MAX.
- REJECTION @ 5100 MHz -40 dB
- REJECTION @ 5500 MHz -40 dB
- REJECTION FROM 12000 TO 29000 MHz: -60 dB



- CONNECTORS: SMA FEMALE CONNECTORS
- SIZE 2.30" (L) x 0.750" (W) x 0.35" (H)
- WEIGHT 1 OZ. TYP.



ENVIRONMENTAL RATINGS:

- TEMPERATURE: -55°C TO +85°C (OPERATING)
-65°C TO +125°C (STORAGE)
- HUMIDITY: MIL-STD-202F, METHOD 103B COND. B
- SHOCK: MIL-STD-202F, METHOD 213B COND. B
- VIBRATION: MIL-STD-202F, METHOD 204D COND. B
- ALTITUDE: MIL-STD-202F, METHOD 105C COND. B
- SALT FOG: MIL-STD-202F, METHOD 107D COND. A
- FUNGUS: MIL-STD-810C, METHOD 508.2
- TEMPERATURE CYCLE: MIL-STD-202F, METHOD 107

ALL DIMENSIONS ARE IN INCHES
TOLERANCES:
X.XX ±0.010
X.XXX ±0.005

NOTE: THE ABOVE SPECIFICATIONS ARE SUBJECT TO CHANGE OR REVISION

PART NO. 155-0897		Planar Filter Company 7311G Grove Road, Fredrick, Maryland		
APPROVALS	DATE	TITLE		
DRAWN RAB	9/11/01	OUTLINE DRAWING 8CL5D3G-200-CD-SFF		
CHECKED		SIZE	FSCM NO.	DWG NO.
ISSUED		A	1QJW0	155-0897
		SCALE	N/A	SHEET 1 OF 1
				REV. -